

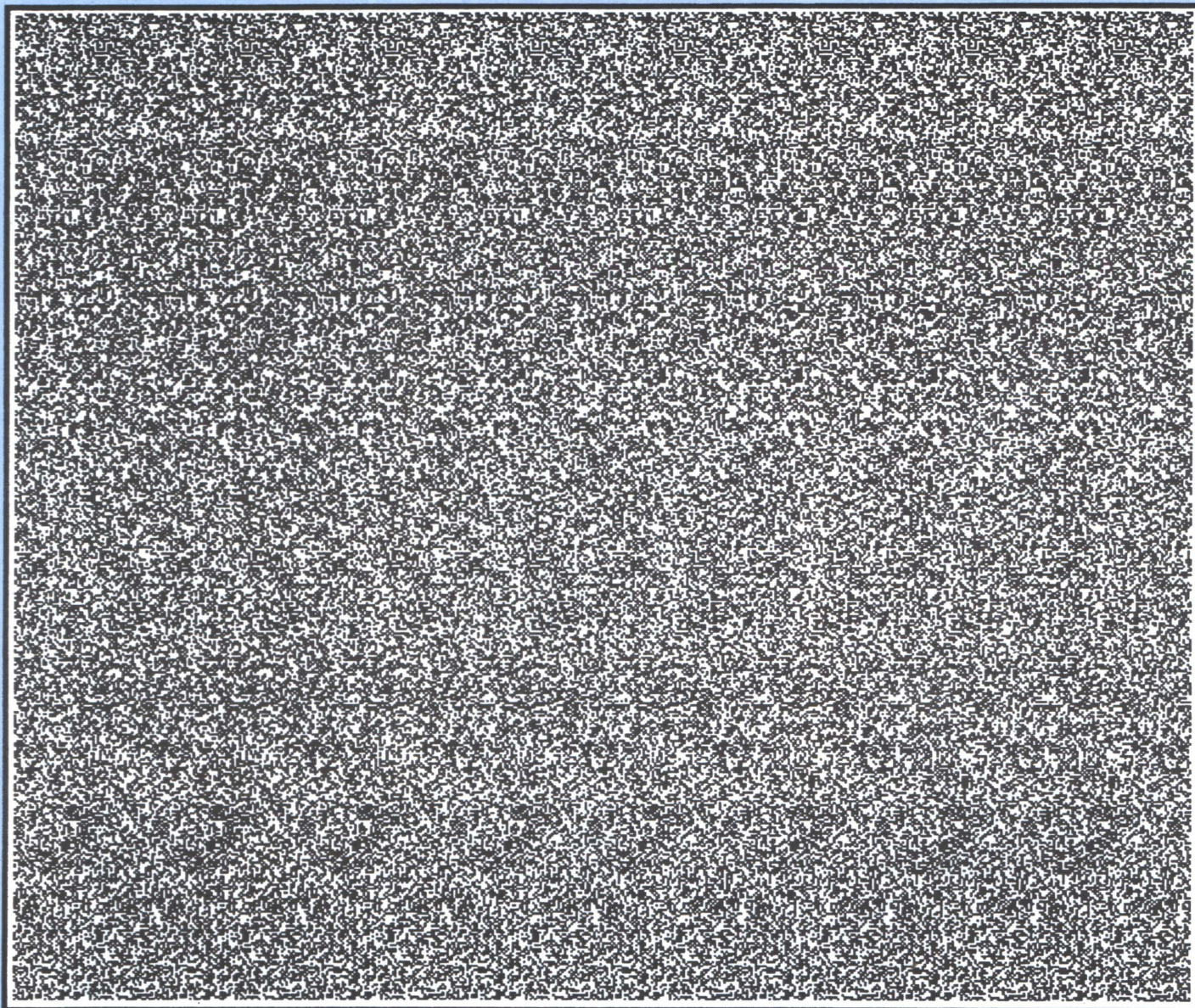


# THE CEREALOGIST

NO. 11 WINTER 1993 / 4

• THE JOURNAL ● FOR CROP ● CIRCLE STUDIES •

PRICE £2.40 / \$6.00



## CONTENTS

### Editorial Notes

Bythorn Bedlam  
The stamp trick  
As others see us

### Mysterious Images & Writing

*George Wingfield*

### More "D & D" Circles in Russia !

*Gordon Creighton and Diana Clift*

### Communicating with Earthlings

*Palden Jenkins*

### George de Trafford

An obituary

### Reports and Sketches

### The Great Keyhole or Earth Goddess

*John Haddington*

### Cornference '93

*John Haddington*

### The Best Intentions

*Chris Kenworthy*

### The Living Circles

*Terry Wilson*

### \$1,000 Prize Crop Circle Contest

*Dr Alexander Imich's Prize Contest*

# EDITORIAL NOTES

## George de Trafford

GEORGE DE TRAFFORD, who was closely associated with remarkable metaphysical insights into the nature of the crop circles and who was much respected within the crop circle community, died in October at the early age of 57. He will be much missed. An obituary of George appears on page 13.

## Bythorn Bedlam

In the last issue I wrote with complete sincerity that I believed the so-called Bythorn Mandala was manmade and that I knew who had made it. Never in the field of cerealogy has such an innocent appraisal unleashed quite such a frenzy -- from various furious croppies! A stinging article in the *Sussex Circular* suggests that such a heresy is "preposterous .... It is NOT man-made. Anyone who thinks otherwise needs to see a psychiatrist." Michael Glickman thunders that my denouncing of the formation as a hoax is a "betrayal of our readership" (see Letters pages), and promptly resigns from *The Cerealogist*. And, during my absence in Texas in October, there were even rumours of a coup d'état against the editor....

Well, we'll soon see who's mad. I'm quite used to this sort of abuse from the likes of Mr Schnabel and his ilk but I don't expect it from fellow croppies. But then, zealots of all kinds who seek to maintain untenable positions invariably accuse those who query what they say, of being mad.

Why my evaluation of just one particular formation should cause such anguish, I cannot think. In the past I have pointed out many formations which I considered fakes and I have written about them in this magazine. Was that "a betrayal"? After all, there have been other contributors who have voiced similar opinions. In fact, *The Cerealogist* has, in the past, run articles by arch-sceptics such as Ken Brown and Jim Schnabel to name just a few. (I wonder if Michael ever savaged John Michell, for inclusion of such subversive material?)

But, seriously, advocates of the Bythorn Mandala could hardly have chosen a worse case on which to stake their reputations. When I first saw photos of the formation it was immediately plain to me that this was the handiwork of Julian Richardson, some of whose creations I had seen and photographed from the air in 1991 and 1992. Here were similar design elements such as a pentagram which he first made in 1992 at

Cranford St Andrew (photos of which I showed as being his work at the 1992 Conference). I called Julian (a.k.a. "Bill Bailey") and spoke at length about Bythorn. It was soon quite clear that he'd made it and it was not long before he admitted this, saying he did it alone.

He subsequently furnished me with a step-by-step description of how it had been made and some perfectly clear photographs showing it partly made (i.e. with rings and petals but no pentagram), and then complete. Quite apart from that, a diagram of his which was sent to me in 1992 showed a similar (but different) ten-petalled design. This is what Michael Glickman calls "the flimsiest of evidence".

Faced with such compelling proof, I can hardly go about saying that I believe Bythorn is a genuine formation. This does not mean that I believe all formations are fakes, as some will try to claim, but it would be completely dishonest to ignore the evidence on Bythorn. Of course there is a genuine and extraordinary phenomenon and we must persevere with research, despite all the circlefaking of the last few years. Now that some tempers, at least, have cooled and more rational counsels prevail, the CCCS will soon hold a full inquiry about Bythorn at which all points of view, including those of Julian the hoaxer, and those of the farmer, will be heard. A report on the findings of the inquiry will appear in our next issue.

I believe that my assessment of Bythorn will be vindicated, but I should say that I don't mind what individuals *choose* to believe. Only that this much-maligned editor should be allowed the same freedom of belief himself!

## A price increase

Regrettably we shall be obliged to raise the price of *The Cerealogist* as from the next issue (No. 12). This is due to increased postal costs and other increased expense in almost every facet of producing and distributing the magazine, not to mention the need to remain solvent! As from April 1st 1994 a single issue will cost £2.80 in the UK or £3.50 (US \$ 7.00) elsewhere (by post). An annual subscription for three issues will be £8.40 (UK) or £10.50 (US \$ 21) elsewhere. This is the first price increase since inception of the magazine in 1990. For those who renew or take out new subscriptions before April the price will remain unchanged.

*continued on page 26*

Front Cover: *Can you see the crop circle? Our cover may persuade some that the circles have vanished but they're still there if you bother to look! The picture is a SIRDS (Single Image Random Dot Stereogram) -- a computer generated 3-D image which can be seen by focussing behind or in front of the paper. If you have difficulty in seeing the 3-D image, try the following method: focus on the two dark dots above the picture, then move the paper slowly towards you until these appear as three in a row. Without changing focus, drop your eyes towards the centre of the page until they slowly acquire focus on the shape which appears. Then slowly move the paper away which should result in sharper focus. Yes, it is an unusual circle, with six clumps of standing "crop" within, viewed from directly above. Two other images may be visible when you focus on a different position. These include an inside-out 3-D image of the "crop circle" and an image with two concentric sets of eight standing clumps. The primary image is, if you like, a Cosmic Mandala - a symbol for meditation. Credit: Robert Schafer, 516 Duke Street, Alexandria, VA 22314, USA.*



**THE CEREALOGIST**  
Number Eleven.. Winter 1993 / 4  
ISSN 0961-6942

*Editor* George Wingfield  
*Assistant Editor* John Haddington

*Design & Typeset* George Wingfield  
*Printed* Embassy Press  
*Subscriptions & Distribution* Hugh Pincott

*Published* Hearne House, North Wootton, Shepton Mallet, Somerset BA4 4HW.  
Tel/Fax : 0749 - 890257. Views expressed in *The Cerealogist* are not necessarily those of the editors.

*The Cerealogist* is published thrice yearly. Advertising rates can be obtained on application to the above address.

*Single copy* £2.50. *One year's subscription* £7.50 inc. p&p. Cheques or postal orders made payable to *The Cerealogist* are to be sent to Specialist Knowledge Services, St Aldhelm, 20 Paul Street, Frome, Somerset BA11 1DX. Tel/Fax: 0373 - 451777.

# MYSTERIOUS IMAGES & WRITING

*George Wingfield*, developing a theme of his talk at the 1993 Cornference, finds parallels between spontaneously appearing images and crop circles.

## Dean Liddell

BETWEEN 1921 AND 1923 a mysterious image of the well-known preacher, Dean Liddell, gradually appeared on an interior wall of Christ Church, Oxford<sup>1</sup>. Liddell had been dean of this cathedral for many years and had died in 1898. The image formed near a window which he had installed to honour his daughter who predeceased him. It began as a white stain and very slowly changed into a "faithful and unmistakable likeness" of the late dean. Photographs show this extraordinary resemblance which seems impossible to dismiss as merely an imaginative whim.

One theory was that it was caused by lichen growing on the plaster, but lichen are usually coloured and this image was basically white. It seems more likely that the mineral salts in the plaster had been affected by the damp causing some kind of chemical change in the surface of the wall. But even if the physical mechanism were understood, there is no accounting for the appearance of the dean's likeness.

It might be thought the similarity was but a freak coincidence were it not for the fact that other faces also appeared on the wall nearby. One face was said to resemble the dean's wife. *Cassell's Weekly*, a popular magazine, reported in 1926 that: "One does not need to call into play any imaginative faculty to reconstruct the [dean's] head. It is set perfectly straight upon the wall as it might have been drawn by the hand of a master artist. Yet it is not

etched; neither is it sketched, nor sculptured, yet it is there plain for all eyes to see"<sup>2</sup>. A researcher found that there was something of a tradition of such wall faces appearing in the church. Nevertheless such occurrences are not always well-received by the authorities and when Nanor Fodor, a prominent psychic investigator, went there in 1932 he found a new altar had been deliberately erected to obscure the Liddell image. It looks as if it is not just the Roman Catholic Church that mistrusts miracles!

The mysterious image of Dean Liddell is certainly not just an isolated case, as we shall see, and I make no apology for calling it a miracle. There are several parallels with the crop circle mystery when it comes to the appearance of spontaneous images like this. The first instinct of modern western man is, of course, to explain it all away. Scientists may examine such images and determine that they have resulted from the action of fungi or lichen or efflorescence caused by damp. This may well provide a satisfactory solution to the mechanism involved. But they cannot explain away the striking likeness except by saying that this is just an illusion which can be put down to innate human imaginativeness. However, quite obviously, there is some other factor at work here.

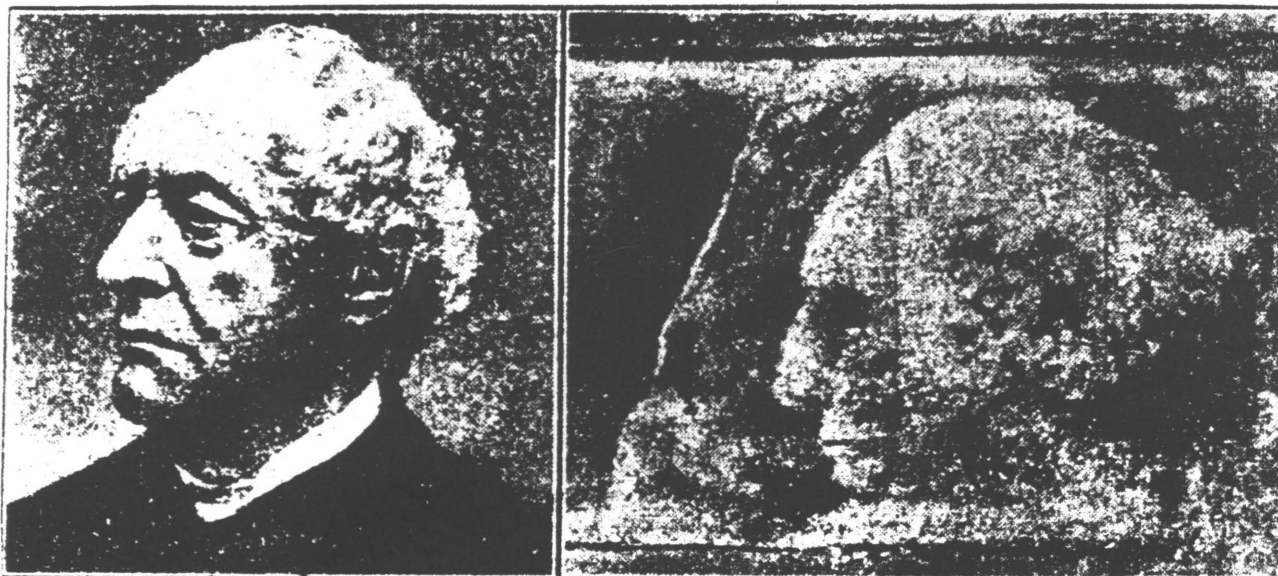
Sceptics and cynics would inevitably suggest trickery. Oxford students (or maybe the cathedral staff) must have engaged in some kind of skullduggery to

produce the image! If such a thing happened today, there would doubtless be those who would attempt to reproduce such images by all conceivable means, and maybe they would succeed. Would this prove all such mysterious images are phony? Of course not; it would merely illustrate once again the sceptics' mental strait-jacket! But, be that as it may, let us consider some other instances of apparently spontaneous images and maintain a Fortean perspective in accordance with the stated policy of this journal!

## The Faces of Bélmez

In 1971 in the southern Spanish town of Bélmez de la Moraleda (25 miles east of Jaén) a series of remarkable faces started to appear on a cottage floor<sup>1</sup>. The woman who lived in the house, Maria Pereira, first found that the outline of a female face had appeared on the hearth-stone of her kitchen fireplace. She tried to scrub it out but it seemed directly set in the concrete. Somewhat alarmed by the face, she then had the hearth covered with a new layer of cement, but, when this dried, the image was still visible. Over the coming weeks further faces appeared on the kitchen floor, some seemingly permanent, or lasting for days, and others disappearing only to reappear with different expressions. New faces would form sometimes where others had been.

Soon news of the faces drew hundreds to the house. It became a tourist attraction



Left: Dean Liddell of Christ Church, Oxford, before he died in 1898. Right: His image on the wall, as it appeared in 1923.

and, as with the crop circles, an admittance fee was charged by Señora Pereira. She had the hearth-stone removed and put on display. Predictably the press claimed that she was promoting a hoax in order to make money and, since all this was during the austere regime of the Franco era, it didn't take long for the local civil and church authorities to forbid this activity.

Nevertheless, faces continued to appear for three more years and during that time dozens were recorded. In 1974 a Spanish psychic investigator, Professor German de Argumosa, actually witnessed the formation of one such face. He photographed it, but it then faded and was replaced by another face some hours later. Professor Hans Bender, a leading parapsychologist, intent on establishing whether or not the faces were of paranormal origin or merely the product of ingenious fraud, fixed a plastic plate over the floor where the images formed. For a time nothing fresh was seen but then condensing moisture on the lower surface largely obscured the view of the floor. It was decided to leave the plate which was sealed in position. New faces did in fact form under the plastic plate but only when Bender had left Bélmez. This was attested by official observers who were present when the plate was finally removed.

There are some parallels here between the images and other paranormal phenomena such as genuine crop circles. First, they never seem to appear when anyone is watching, especially if one is specifically trying to observe such an occurrence. Then, on those extremely rare occasions when such an event is witnessed, no visible agency is seen. Finally there is the overwhelming impression that, whatever agency is responsible, it must be of intelligent origin whatever form that might take.

Photographs positively confirm that the Bélmez faces were not just imagined configurations or pictures that had been drawn or painted on the floor. The first face on the hearthstone, showing a woman's head, is the most clearly defined but others plainly show, for instance, a nun, and a bearded man with a monk's cap. Some are vague outlines in the concrete but many are well articulated and perfectly recognisable as heads. Analysis of the floor surface taken from scrapings of the faces themselves showed no artificial colouring or anything to account for their presence.

Eventually the local people dug up Maria Pereira's hearth in an attempt to solve the mystery and discovered human bones buried below. Although it might have been thought that these were from recently murdered victims silently crying out for justice, it was agreed by most that

these were the bones of Christian martyrs killed by the Moors in the 11th century. After this excavation even more faces began to appear.

Parapsychologists have suggested that Señora Pereira possessed some psychic faculty, akin to psychokinesis, which somehow activated the phenomenon as in a poltergeist manifestation. But, despite the cemetery underneath the house, there is no record of it being haunted or of any other apparitions or disturbances. It is perhaps easy to propose a human focus for such phenomena in someone's home, whereas no particular person seems to be involved when faces appear on the walls of a church.

## Divine Images

It does seem that spontaneously occurring images of the sort described appear more often in ecclesiastical buildings or at least have some religious association. There are many recorded cases of such faces or figures forming on church walls and some images, at any rate, are regarded as miraculous. The best known instance of a divine image is not on a wall. It is, of course, the Turin Shroud and, although recent scientific tests have shown that the age of the shroud precludes the possibility that it existed at the time of the Crucifixion, the image is nevertheless of mysterious provenance.

The Turin Shroud shows a perfect negative image of a crucified human male but it is certainly not an artistic representation and there is still no consensus on how it was produced. There is some evidence that there were as many as forty such Holy Shrouds in existence in Europe in the fourteenth century, all of which were venerated as "genuine" and considered to be of miraculous origin. From this one can only infer that their images of the Crucifixion were supposedly of spontaneous origin rather than anything wrought by human hand.

As with the circles, the actual origin of a divine image is not so important as the effect. Something that is perceived as being of divine or mysterious origin is held to be miraculous and therefore it can exercise an extraordinary power over the percipient. Holy relics, divine images, weeping statues and the like all fall in this category and there is no need to emphasise the influence which these have had on humans and human affairs. Foremost is the power of healing attributed to such objects and, similarly, there have been cases of healing ascribed to the crop circles.

One inclines to think of miracles solely in terms of the Christian religion but there

are obviously equivalent phenomena in other faiths. An example of an Islamic miracle which has been reported several times in the last few years in this country has been the finding of the name *ALLAH* imprinted inside aubergines. A member of the Asian community in, say, Leicester will have bought the vegetable among others to prepare for dinner and, on slicing it open, will have discovered the Arabic word *ALLAH* perfectly delineated in the folds of the aubergine. A miracle! And before long friends and neighbours will have gathered to view this new prodigy.

To the cynical British and other infidels this scenario might appear totally absurd. But is there any reason that it should be, and who is to say that this word is not of divine origin? One could argue endlessly whether this was a freak of nature, or the extent to which the characters of the word were perfectly formed, but any conclusion will always rest on human perception rather than objective scientific tests.

## Writing on the Wall

Mysterious words and characters appear equally in Christian or western culture. From the Old Testament there leaps to mind the words *MENE, MENE, TEKEL, UPHARSIN*—which were seen being mysteriously inscribed on the wall by a disembodied hand at King Belshazzar's feast (Daniel, Ch. 5). Whereas this was bad news for the king—who didn't consider it was a hoax—and who was slain later that very night, it certainly enriched the English language with the expression "the writing is on the wall". Even if this was a mythical event, perhaps we should bear it in mind when seeking to interpret the Milk Hill Script crop formation of 1991. Was the writing on the wall for the crop circles themselves? Maybe the best interpretation so far is Professor Hawkins' *OPPO NO ASTOS* ("I am against hoaxes")<sup>3</sup> and that seems peculiarly appropriate in the light of recent developments which appear aimed at destroying the phenomenon.

Other cases of writing on walls by invisible agencies, or possibly spirits of the dead, have been reported throughout history and a comparatively modern example is that associated with Matthew Manning at Queen's House in Linton, near Cambridge<sup>4</sup>, in 1971 (which is, curiously, the year when the Bélmez faces started to appear). Matthew Manning, who is extremely psychic, appeared to be the focus of intense poltergeist activity in the house and at his boarding school during his teenage years. Among a variety of phenomena which occurred then, the "spirit graffiti" of Queen's House were the most bizarre.



*The image of Christ on the Turin shroud. Now acknowledged to date from the Middle Ages, rather than the Crucifixion, the process by which the image was made is unknown.*



*The first of a series of mysterious faces which began to appear in the concrete kitchen floor of a house in Bélmez, Spain, in August 1971. (Photo by Dr Hans Bender)*

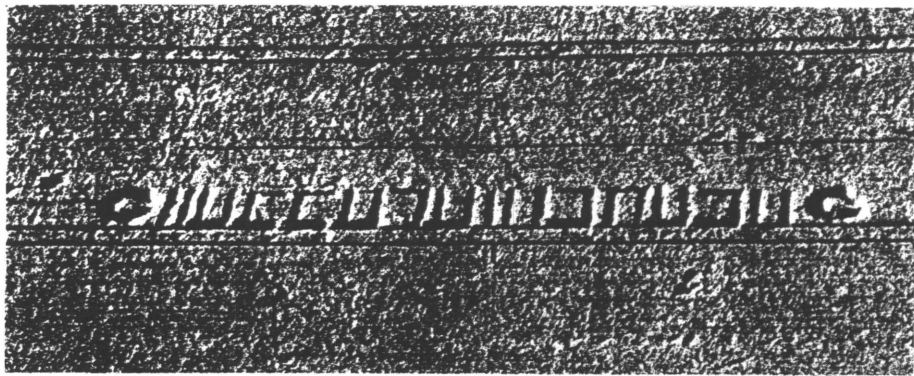
In one week over 500 signatures, nearly all with a date, appeared on the walls of Matthew's bedroom during the day and at times when the room was empty. With doors and windows securely locked, scratching noises were heard inside the room but no one ever saw the pencils, which had been left there, move. An entity claiming to be Robert Webbe, one of the original owners of the house, which was built in stages between 1550 and 1730, had indicated through automatic writing performed by Matthew that he would get "half-a-thousand signatures of friends and family". Webbe died in 1733.

The writing did not and would not appear, mostly on one panelled wall of the bedroom, while this was under observation. Witnesses at the time testified that they felt sure no trickery was involved. Many of the signatures, which were dated between 1355 and 1870, were subsequently traced to names appearing in the Linton parish records. If we allow that this was indeed a genuine manifestation, which some will be unable to accept, it is almost impossible to explain it solely in terms of "energies" or PK. There seems here the clearest indication that non-physical entities (dare one say, spirits of the dead?) acted exactly as though invisible persons were present.

This very strong impression presents itself again and again when phenomena of this type occur. In a recent book about a case of poltergeist activity in sheds used as a garden supplies shop in Bromley, Kent, in 1973-74, it appeared that such invisible entities threw fertiliser pellets all over the place<sup>5</sup>. In open bags of fertiliser in parts of the sheds where no one had been, scoop-marks, like the impressions made by human hands, could sometimes be seen in the material immediately after an attack. When such events happen, it is difficult to maintain that such agencies operate with complete independence of the involved witnesses. Would such manifestations even occur if the venue was deserted and human awareness of the events was absent? Such interaction, and the interaction by certain psychic people in particular, is surely key to many such paranormal happenings including, perhaps, the appearance of mysterious images.

## An Australian Apparition

We have concentrated on material images in this brief piece but we should not overlook the fact that apparitions and ghosts can also be classed as mysterious images and, to understand more fully the factors at work, these should not be ignored. One such case which is taken from a recent book<sup>6</sup> will suffice at present :-



JURGEN KRONIG

The notorious and enigmatic Milk Hill Script crop formation (August 1991).

"On the 5th April 1875 my wife's father, Captain Towns, died at his residence, Cranbrook, Rose Bay, near Sydney, New South Wales.

About six weeks after his death, my wife had occasion one evening to go to one of the bedrooms in the house. She was accompanied by a young lady, Miss Berthon, and as they entered the room -- the gas was burning the whole time-- they were amazed to see, reflected as it were on the polished surface of the wardrobe, the image of Captain Towns. It was barely half figure --the head, shoulders and parts of the arms showing-- in fact, it was like an ordinary medallion portrait, but life-size. The face appeared wan and pale, as it did before his death; and he wore a kind of grey flannel jacket, in which he had been accustomed to sleep. Surprised and half alarmed at what they saw, their first idea was that a portrait had been hung in the room and that what they saw was its reflection --but there was no picture of the kind."

"Whilst they were looking and wondering, my wife's sister, Miss Towns, came into the room and before either of the others had time to speak she exclaimed "Good gracious! Do you see papa?" One of the housemaids happened to be passing downstairs at the moment, and she was called in, and asked if she saw anything, and her reply was, "Oh, Miss! The Master!" Graham --Captain Towns' old body servant-- was then sent for and he also immediately exclaimed: "Oh Lord save us! Mrs Lett, it's the captain!" The butler was called, and then Mrs Crane, my wife's nurse, and they both said what they saw. Finally Mrs Towns was sent for and, seeing the apparition, she advanced towards it with her arm extended as if to touch it, and as she passed her hand over the panel of the wardrobe the figure gradually faded away, and never again appeared, though the room was regularly occupied for a long time after."

The statement was signed by "C.E.W.Lett", the captain's son-in-law,

and came with the signed affidavits of other witnesses.

We are unable to cover dozens of such cases of striking and unmistakable apparitions, often witnessed by many people. Although single witness accounts can often be dismissed as hallucinations or dreams, there remains a substantial body of testimony and rather than trying to explain away such events as fraud or self-delusion, we should accept them in trying to understand the nature of the reality which we inhabit.

The purely materialist, mechanistic, view of the world has no answer to these mysteries, nor will it ever have. Understanding will only be arrived at if we accept and study the nature of human consciousness, which for each one of us, and all of us collectively, is our primary reality. It is the relationship between consciousness and the external physical world which holds the key to the mysteries which we have just examined. This relationship, or balance, is surely the most vital aspect of our world, which is essentially dualistic in its nature. This will hopefully be the subject of a further article in this journal.

## References:

1. D. Scott Rogo, *Miracles - A Scientific Exploration of Wondrous Phenomena*, Aquarian Press, London, 1991.
2. John Michell & Robert J.M. Rickard, *Phenomena - A Book of Wonders*, Thames & Hudson, London, 1977.
3. Professor Gerald Hawkins, *The Cerealogist, No. 9 : Milk Hill Decoded - A Challenge*, p.3.
4. Matthew Manning, *The Link - the Extraordinary Gifts of a Teenage Psychic*, Colin Smythe, Gerrards Cross, 1974.
5. Manfred Cassirer, *The Persecution of Mr Tony Elms (The Bromley Poltergeist)*, published by the author, 1993; available from him at: - 38 Christchurch Avenue, London NW6 7BE.
6. Raymond Moody, M.D., *Reunions - Visionary Encounters with Departed Loved Ones*, Villard Books, New York, 1993.

# AFTER ARGUS, WHAT NOW?

In place of the proposed Review of the Report on the Results of Project Argus, Montague Keen contributes an assessment of the current position which looks at the difficulties experienced by Argus and the changing perspective.

THE RESULTS OF the first co-ordinated, non-secretive effort to explore the crop circle mystery scientifically and methodically are already fading into fast-changing history, picking up myths en route. It was only last spring that there emerged the long, detailed but (let it be admitted) largely unproductive report of the internationally-funded Argus operation. While it raised more doubts and questions than it answered, it did steer us away from false trails and indicate the direction in which future research was likely to prove most rewarding. Before the 1994 season bursts upon us, let us see where science has got us so far.

It could never be part of science's role to explain the *meaning* behind the phenomenon. So far there is no satisfactory scientific basis for any of the many theories. Some are presented as indisputable facts when they are no more than speculative hypotheses. The brute fact is that we still have no reliable means to determine the difference between a genuine and a man-made formation; and hence have no reliable proof that there is such a thing as a genuine formation, despite much circumstantial evidence relating to the phenomenon as a whole. Even the prosaic theory championed by Dr Meaden, Jenny Randles and Paul Fuller that all formations are fakes save those uncomplicated circles which appear compatible with the plasma vortex concept suffers from shortcomings with which Randles and Fuller conspicuously fail to deal in their most recent book (see Book Review, page 17).

The first aim of any investigator must be to make certain that what he is examining is not a fake. As those who examined the Hitler diaries, the Piltdown skull, the lost Haydn quartets, the Keating and van

Megeren art forgeries and the Turin shroud might testify, this is not always so easy; and much mud covers many faces when confident assumptions are pricked by naughty revelations. So Argus's chief aim was to discover a litmus test of genuineness - i.e. something which could not be fabricated by human action.

## In search of a Litmus test

On the basis of two preliminary reports in 1991, we confidently expected to have it in the bag before the end of the 1992 season. The more important, because the least complicated, was evidence of residual traces of identified, short-lived, non naturally-occurring radioactive isotopes in soil samples from two of the five formations investigated. It would have been negligent in the extreme had this not been followed up by a full-scale investigation; and this is precisely what the Argus team did. Samples were taken from a large number of formations and analysed at laboratories in Britain and the U.S.A. where highly sensitive instrumentation was available.

The early indications were not confirmed. No-one knows why. It could be, of course, that all the formations we selected were hoaxes; but it might equally arise from the inherently spurious nature of all circles, or from some as yet undetermined fault in the analytical procedure the previous year.

The other chief area of exploration related to the effect on the plant tissues. This is far more difficult and disputatious. The results centered chiefly on the work, and conclusions, of Dr W C Levensgood, the American biophysicist whose pioneer efforts have been directed at identifying, measuring and recording changes in the appearance of those parts of plant tissues most likely to be affected by an infusion of energy during the process of crop flattening. There has been some argument over the measuring and statistical evaluation techniques involved. But the chief dispute concerns the method of contrasting the changes found in plants, whether in stem tissue or (more profitably) the skin-like bract tissue surrounding seed heads, with those found in the control samples taken from outside formations.

It has been accepted that comparison should be made, additionally or alternatively, with artificially flattened crops. However, so far no method commanding general approval has been found to ensure that strict measure of comparability which science demands. To be certain that the changes seen could not have come about by the use of an unknown but human-directed method of flattening, plants taken

from outside the formation would ideally have not just to be of the same variety, age, moisture content, etc., as the circle samples, but taken at the same distance from the formation, be grown on precisely the same soil type - and flattened at precisely the same time and subsequently handled in the identical atmospheric and storage conditions. Unhappily this is simply not practical; and this accounts for the caution with which litmus test claims are treated. This, and some technical disputes among participating scientists, account for the cautious and non-committal way in which I wrote the plant physiology section of the Argus report.

## Project RELATE

More promising, however, was the behaviour of a variety of instruments aimed at detecting anomalies of an electromagnetic character. Whereas it is extremely difficult to capture, let alone measure, the so-called luminosities so frequently associated with the subsequent or prior appearance of crop circles, there are instruments which can both record and measure the intensity of energies associated with formations. Of course, since we do not know *what* they are, we can't be sure how best to record and evaluate them, and we have first to establish whether or how far they exist in false circles. Nevertheless, there were sufficient unexplained, odd recordings to warrant further and better instrumental assessment in 1993.

Hence RELATE, or Research into ELectromagnetic And other Terrestrial Effects. It was a limited operation funded by CCCS, and run in close harmony with a group from its opposite number in Germany, FGK. We had to decide between two different approaches. One was to await news of a formation and rush in as soon as possible with our instruments. The second was to set up fixed monitoring devices in strategic points in the hope of capturing a genuine formation and establishing just what energies - acoustic, magnetic or whatever, - were involved.

We chose the latter. There were good reasons for it. We had no way of getting to formations early, even first, or of finding and getting permission to enter from farmers quickly, if at all, or of knowing whether we were wasting our time chasing hoaxes. We did not, and still do not, know whether and how fast the formation energies attenuate over time, or whether they stop abruptly at formation boundaries - knowledge of this being most important to establishing control patterns.

The results have been written up by one of the team, Dr Roger Taylor. The

instrumentation was set up in an area which had seen a dozen formations on the same farm the previous year. In 1993, in the immediate vicinity under surveillance, there was only one circle. It was "of dubious authenticity" and occurred in the field after we had packed up. That may have accounted for the mainly negative results, although a number of seemingly anomalous signals were recorded on our range of instruments. Again, the fact that this careful monitoring operation conducted during the height of the circle-forming season proved nothing doesn't make it either unscientific or worthless. It was necessary, and it was successful as a piece of well-organized scientific detection.

What happens in 1994? That remains to be decided. It is clearly going to be difficult to raise either the money or, more important, the enthusiasm, commitment and time required to encourage experts and volunteers to spend many long days and nights in what has thus far been a frustrating but still tantalisingly baffling operation.

Meantime it is encouraging to note that Dr Levensgood is now concentrating his energies on another aspect of crop behaviour which far better lends itself to objective, recordable assessment; and he claims to have established an unambiguous method to separate genuine sheep from phoney goats. The method concerns the rate at which electrically charged particles, ions, are transported across the bract tissue. Levensgood, who is an authority in this area, has found significant differences in the rates between samples from formations and those from outside. This is clearly important, but, as I've already indicated, until we have had clarification of a number of procedural and technical issues, it might be premature to send up the rockets and burst open the champagne corks.



## PHENOMENAL BOOKS!

Crop Circles - UFOs - Earth  
Mysteries - Mind - Body -  
Spirit

Send 6x1st-class stamps for our mail order  
catalogue (6000 titles)

THE INNER BOOKSHOP  
111 MAGDALEN ROAD, OXFORD OX4 1RQ

# MORE "DOUG & DAVE" CORNFIELD CIRCLES IN RUSSIA

In an article reprinted from the current issue of *Flying Saucer Review*, editor Gordon Creighton sees further proof of the demon duo in Russia!

IN MY TRANSLATION of Yuri Stroganov's article, *An English Ring Found in Southern Russia*<sup>1</sup>, I conveyed some details of the on-going Doug 'n' Dave saga in their astounding and never-to-be-forgotten peregrinations through the vast lands of Holy Mother Russia, and it again gives me pleasure to translate from the Russian a further report on their crop circle handiwork, which appeared in the August 1991 issue of *Chetvertoe Izmerenie (Fourth Dimension)*, official journal of our friends of the Yaroslavl' UFO Investigation Group.

The report this time is of both UFO sightings and Doug 'n' Dave corn circles in May 1991 in the region of Stavropol' in the Caucasus. The remoteness of this region testifies to the heroic tenacity of our doughty and "Munchausenesque" pair of heroes—if one can dare coin such a term.

At Pyatigorsk (90 miles SE of Stavropol') four office executives of local bus companies, watching from a hotel room in that town, observed at about 9.05 p.m. on May 24, 1991, one huge UFO accompanied by five fiery globes. The chief witness, Mr Alekseyevitch Vyshnyakov, manager of Stavropol' Bus Lines, reported as follows to *Fourth Dimension* :-

"We (four of us) were in our room watching TV. The *Vremya* programme had just begun at 9.00 p.m. on May 24, when I happened to glance towards the window and beheld six strange globes or balls, one large one and five smaller ones, rapidly descending in the sky. The large globe led the way and the other five followed. Their colour was just like the colour of plasma, and each of them had a small "tail". We watched as the balls formed up in a straight line, and then suddenly, right before our eyes, another extraordinary craft appeared (see sketch from *Chetvertoe Izmerenie* No. 8, 1991). The craft had, at its centre, a huge nozzle. And it was enormous—the width of a football pitch. It remained visible for about a minute and then vanished, still totally silent."

People in other places also seem to have seen it. The newspaper *Sovetskaya Prikum'ye* carried a report that many folk had seen it. At the Prikumskiy State farm many people even maintained that there had been UFO landings near there. Reports also came in from Kirovsk and

from Stavropol'. The reports all seemed to refer to the same date -- May 24, 1991.

The newspaper *Sovetskaya Prikum'ye* was also the one to carry the account of Doug 'n' Dave's new cornfield circles. The description was as follows :

"Over an area of about 0.2 hectares, there were six regular, perfectly formed circles and two small rectangles. The diameter of each circle was 7 metres. And within the circles and rectangles the length of the wheat was 10 - 15 cms. shorter than in the rest of the field."

## Note by the Editor of FSR

Some of our readers may feel that if UFOs and corn circles turn up in the same place, this is bound to mean that UFOs and corn circles must be related in some way, but, as we all know, the best brains have long ago ruled this out, and proved it to be impossible. You are therefore obliged, dear readers, to accept, as I accept, that Doug 'n' Dave simply happened to be in that remote part of Russia when the UFOs started cavorting around.

## Reference:

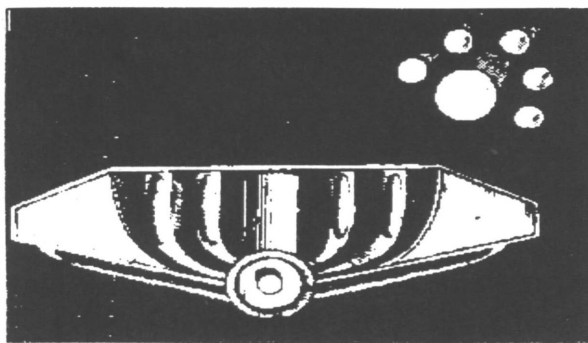
1. *Flying Saucer Review (FSR)*, Vol. 37, No. 3, Autumn 1992. FSR can be obtained from :- The Editor, FSR Publications Ltd., P.O.Box 162, High Wycombe, Bucks. HP13 5DZ.

## Siberian Crop Circles

*Diana Clift* contributes this report of circles near the Siberian city of Krasnoyarsk

KRASNOYARSK is an industrial city with a population of one million in the heart of Siberia. Temperatures are below -30° C from November to March and above +30° for a few weeks in July and August when the black fly are out! So unpleasant is the climate that it was a popular destination for intellectuals sentenced to internal exile by Stalin. It was a city completely closed to foreigners until the break up of the Soviet Union. But for my friend Lydia it is home.

I first met Lydia in 1988 when she came to England as a mature student to study



The large craft and six globes seen at Pyatigorsk.

English and she stayed with us for three months. Neither of us had heard of crop circles at that time and she didn't know of my interest until she returned for a short holiday last November. When I tentatively mentioned the subject she was astonished as she had rather assumed that the circles were an exclusively Siberian phenomenon! They had been hushed up by the local authorities and were not covered by the local press, but now that people were more free to talk about such things, she discovered that Krasnoyarsk was quite a centre of crop circle activity, with several events occurring each year, at least since 1990, and probably earlier. She thinks the events were complex patterns, though photos and diagrams are almost non-existent.

Her own experience occurred in July 1992, before she had heard of the phenomenon. She was out walking with a friend near her dacha, about 40 km out of Krasnoyarsk. They were crossing a meadow in the middle of a wood when they saw a spirally flattened oval shape in the grass. They went to investigate and both experienced an odd sensation which Lydia found hard to describe in English. The air over the oval seemed colder than the surroundings and she and her companion both felt most uncomfortable and uneasy. The feeling lasted for a couple of hours after leaving the circle and was sufficiently disturbing that Lydia approached a colleague of hers at the University, a physicist. To her surprise, he said that crop circles were quite commonplace and he was convinced that they were of meteorological origin. Most people in Krasnoyarsk are still reticent to talk publicly about the paranormal but Lydia discovered several others who had seen circles and were convinced that they were extraterrestrial in origin. All seemed convinced that secret government research was in progress. Needless to say I have asked Lydia to keep me informed of future events.



---

# COMMUNICATING WITH EARTHLINGS

*Palden Jenkins*, author of a remarkable new book, *The Only Planet of Choice* (which was reviewed in our last issue), reflects on the possibility that crop circles are of ET origin, their purpose, and the fundamental shift in our reality which is now occurring.

WHEN FIRST I heard of the crop circles, something in me intuited they were connected with ETs. In the light of what I had thitherto learned and experienced of at least *some* ETs, the circles made innate sense. Time hasn't changed this, even though it has been distinctly unfashionable to discuss this publicly. Yet, the rampant manoeuvrings of hoaxers and cereology-debunkers, and the relative infertility of 'rationalism' in making explanatory progress in cereology paradoxically tips the scales *toward* the ET hypothesis: if previous approaches have shed incomplete light on understanding crop phenomena, why be averse to investigating the ET agenda? Nothing can be demonstrated or refuted without full and open investigation.

Unwillingness to research the ET hypothesis is not a *rational* response to our situation: it is *emotional*, arising from fear of change, of reality-confusion and of stepping too far out of line. In this article, I seek to push out some parameters, with some basic ideas and ruminations for your consideration. My approach is to look at the ET view of things from the *inside*, imaginally, logically and intuitively, with some help from current available information.

As far as I am aware, there is a range of different ET beings operating in and around planet Earth. The picture is not simple, and, as in cereology, there are no hard-and-fast answers. These beings could be roughly grouped as follows:-

- Galactic locals, who variously have become identified as Sirians, Reticulan and Orionian greys, Ashtars, Pleiadeans (of two kinds), Ummites, Arcturians and others; they look advanced to us - but that's relative and *assumed* - if they lived

on planet Earth the picture might well be different. Their history, nature and evolutionary paths seem to be fundamentally different from ours; there is a wide range of beings in this group, by species, culture, experience and motivation<sup>1</sup>; some of these beings seem to have a benign attitude to us, some are fascinated by us or quietly cover some of our vital forgotten planetary duties, while others seem to look on us as a resource for tapping, or even a

perpetuate and advance current convenient power-arrangements on earth, to obstruct the awakening of humanity to its deeper nature and purpose.

These groupings represent an oversimplification but serve our purposes for now.

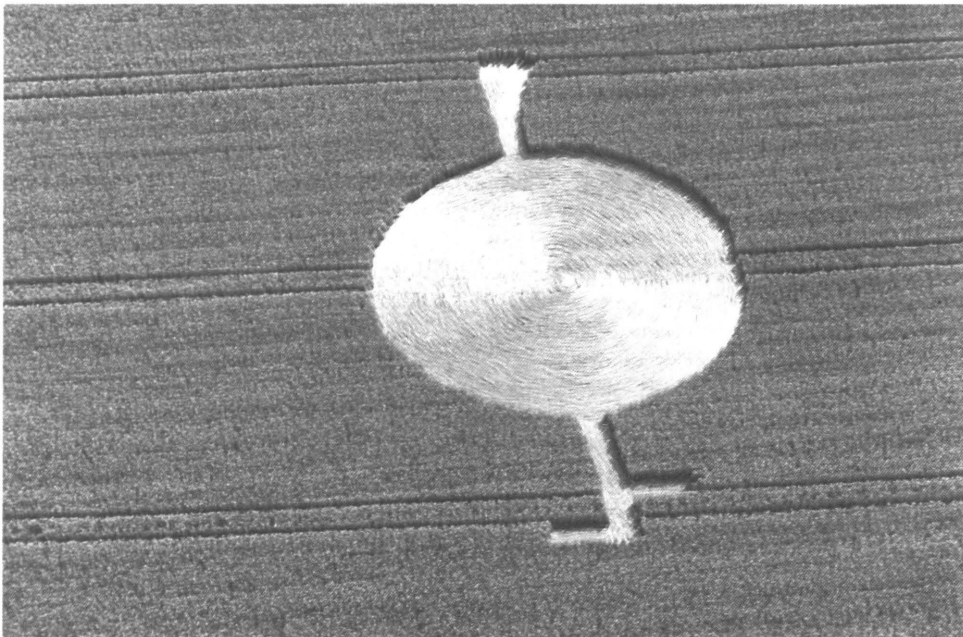
It is *we* who are drawing the attentions of these various ETs - attentions for a variety of reasons, depending on who they are. Some came to find out what our nuclear explosions and radio-wave output

are about, and others come because they know we're 'going critical'. What we do or don't do in the future can be important to them. They are thus making various kinds of contact with us - through close encounters, UFO phenomena, 'abductions', psychic communication, dream experiences, incarnation amongst us<sup>5</sup>, idea-prompts and.... crop formations.

My guesstimate

is that only *some* ET civilisations are involved in making formations. My further guesstimate is that the more distinctive and elegant formations over the years have been effected by several of the higher civilisations, or their 'contractors', of the second grouping above. It might be that earlier (pre-1988) simple circles might have been a product of nature's own energy and intelligence<sup>6</sup>, which off-earth beings have made use of - since this, for them, is difficult operational territory, even though their abilities might be great. Their technologies are founded on the synergistic use of available energy - gravitation, cosmic rays, thought.

The motive for going to this trouble seems to be to artfully intervene in humanity's current history without intervening. Advanced universal civilisations need us to fulfil our collective



race for manipulating<sup>2</sup>;

- Civilisations of a distinctly higher, what we call 'spiritual', order, working throughout the universe, together with derivative 'contractor' civilisations working for them within our galaxy and dimensional-spectrum; these tend, unexpectedly, to understand us more accurately than our local neighbours, since some of them seem to have been involved with the ancient setting up and current monitoring of our planetary sphere<sup>3</sup>; these seem variously to work in alignment with 'headquarters', what we call 'God'<sup>4</sup> --even though beings in the first category above have their own grasp of divinity too, as do we, in our better moments;

- Universal and galactic civilisations aligned to obstructing universal evolution (as with the Lucifer myth), seeking to control and corrupt things, seeking to

purpose on earth, because, despite our collective denial of the existence of off-earth beings, we are nowadays making a big difference in the universe. We're holding up the works. They wish us to evolve into responsible planet-stewards and universe-participants, and (through experience, evolution and activity) into a new hybrid of soul --one which has mastered living in dense, complex and treacherous situations, and which has broken new ground and become stronger as a result. When humanity awakens as a whole, it stands to export *billions* of uniquely enlightened, interesting souls into the universe. Thus it is in their interests to prompt us to remember the knowledge we have within us. This might sound ridiculous to some -- but form your conclusions slowly!

Evolution on earth seems to be about mastering an initiatory conflict between our spiritual and everyday natures -- learning from life. And it is about *building heaven on earth* --a synergistic civilisation and a planetary resonance which awakens and reflects the divine in us and all things. All of us are eyes, ears and hands of consciousness-seeking-to-understand-itself. Today we are at a critical stage, where we could either ruin this unique psycho-ecological planetary experiment, or we could transform ourselves and it. There are so many souls now on earth, in such a mess, that our transformation resembles a threatened cancer patient miraculously healing himself --an impossibility made possible, with the help of the threat of death.

But there is a twofold conundrum: first, ETs may not override our free will (even though some local ETs do), and second, we give them no conscious attention. What do you do if you're trying to get through to someone who huffily faces the other way? A little benign trickery is being used: the setting of an educational riddle, which activates deeper consciousness in us. Something which irks us, which we cannot reduce to a pile of neat reductionist explanations. And, neatly, crop formations impinge directly only on *consenting* earthlings.

These guys cannot just *appear* before us, to tell us whatever we need to learn -- this has been done for millennia and it didn't work<sup>7</sup>. Blatantly intervening in our lives at this stage would deprive us of precisely what we are here for: the opportunity to learn and master the full implications of individualised free will, conscious action and a magnified capacity to innovate - in a densely-physical planetary situation. Despite our being close to geno-suicide, non-earth civilisations may not show themselves blatantly, for they would short-circuit our evolution and earth's 'charter of incorporation', and thereby ruin a unique planetary project<sup>8</sup>.

Nevertheless, they can drop enigmatic hints, prompting us to take charge of our knowledge, our options and our lives.

## The purposes of the circles

This brings me to suggest some of the purposes behind the crop formations. One obvious one, by dint of the location and design of many pictograms, is to communicate with humans. They want us to learn their language, which to us is an a-logical one. It communicates mind-to-mind through imagery and holographic thought, directly. They feed us puzzles and phenomena which are, to us, inexplicable, forcing us to *see* more deeply, to experience gaps in our reality which won't go away, to grow conceptually and spiritually. It's irritating to our old consciousness, and exciting to our future-consciousness.

On top of this, they seem to be giving concealed information -- it might well include specific clues to help us uncover solutions to world problems<sup>9</sup>, as well as open doorways into our future. Spoon-feeding us neat *answers* wouldn't help us, since currently we would ignore or abuse them, as is our habit. However, giving us *ko-ans* (unanswerable questions) can change our whole mode of awareness, taking us to where we can see such answers for ourselves --and thereby we will have stepped forward. Crop formations are, to me, *holographic, multi-purpose* devices, not limited in scope or to the localities they pepper. They are not easy to create, not easy for us to behold - and they contain a multiplicity of implications. They form a paradigm-busting research and growth stimulus.

When one gets involved in ET-ology, one's mind has to change, and things start linking together in a new way. For example, it is necessary to grasp the interconnected relationship of gravity, light, energy, time-space

and thought. If we courageously follow this through, we will probably be led to immense changes --fundamental technological breakthroughs and thorough ecological, social, and psycho-spiritual transformations. Our past ways will probably be rendered obsolete and hollow. It might make us more *human* to each other.

Progress has been made by some people in these directions since the 1960s, yet what crop formations and ET activities suggest is that *not a stone in our reality will remain unturned* --for our problem is our current limited sense of reality, and survival undoubtedly involves transforming it --with or without outside influence. We fear falling into the gaping immensity of ET, paranormal and cereological realms<sup>10</sup> --let alone a wide-open expanse of political, demographic and ecological futures. It scares us --we want to run home to our known safety-sphere.

## Earth energies & crop circles

In cereology, a connection has been loosely established between earth energies and crop phenomena, but this connection hasn't yet been made when looking at possible mechanisms --the earth energy matrix, the circle-makers' design capacity,



the 'cooking' phenomenon at the base of crop-stalks, and the *pulling down* of stalks to the ground (probably through precision gravitational fields). My feeling is that all these factors are connected in a unified and simple mechanism - of which molecular changes in wheat, radiation, and dowsable energies are but part-symptoms.

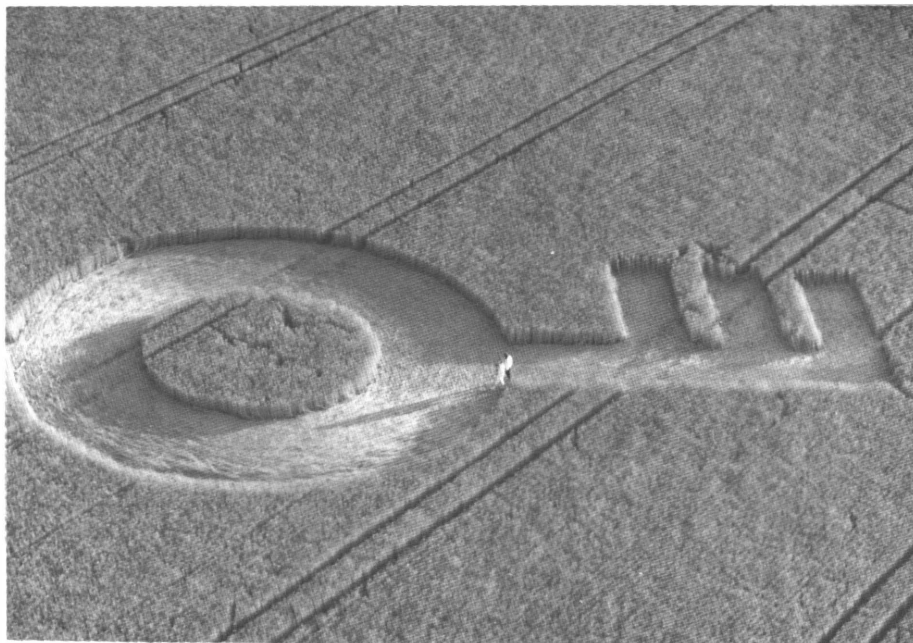
While I would suggest that the initiative, design and intent behind crop-formations originates from ET intelligences, the physical formations themselves arise through a manipulation of earth and life energies, and gravitation-electro-magnetism-light-thought, and physical and metaphysical laws, with the part-aware facilitative help of human (un)consciousness. All these factors are as earthly as they are cosmic.

Formations seem to represent either the creation of new archetypes or the revival of ancient ones - perhaps non-terrestrial ones. Yet, we are putting up a struggle against understanding this. Despite our talk of intricate morphogenetic, etheric or subtle reality-fields behind physical form, we still do not *emotionally* recognise these as *real* or necessary in the very existence of life. Yet, the concentrated *presence* in formations, which many cereologists variously sense, draws attention to these subtle fields, frequencies or realms - and these, to me, are *the* key to the whole phenomenon. Crops are but an artistic medium. If science fails to identify and adjust to subtle energy and its field-behaviour, then it fails us dismally and marginalises itself in the fullness of time.

Subtle energy-imprints in genuine formations are more important than their physical designs and manifestations - and they are likely to be the key to recognising genuine formations. Looking *only* at physical attributes of formations is like looking at a plastic floppy disk rather than using what's recorded inside it. The more we receptively and discerningly *take in* these invisible imprints, the more we might understand the formations - and probably new possibilities ahead, concerning our future and potential.

These subtle imprints seem to contain both *energy* and *information* - woven holographically, multi-level, teaching us to understand holistically. Through entertaining and researching *all* options and viewpoints, allowing contradictions to live in peace, and through developing multi-faceted, multi-level research techniques backed with elastic ideas, we *can* ferret our way through this enormous question.

Involvement does affect our own growth path too, penetrating our personal psychology and life. Resistance to this inevitably causes trouble. Unfortunately, the parts of us which touch formations are mainly our clumsy shoe-ridden feet! Touching them



deeply, by a movement of the heart, they touch us, *move* us, deeply. A cereologist unwilling to see his or her life change is, in my experience, driving with the brakes on - leading either to overheating (relationship and financial problems) or locked wheels (intellectual dead-ends).

The formations seem to be teaching us that intuitives need to become more systematic, and that intellectuals need to grow into feelingfulness and genuinely freed thought. Here's a wild notion: people who are *smitten* by crop phenomena are smitten because it activates *memory* - they alert us to *remember the root-purposes for which we personally chose to come to earth*, however long ago.

## The types of crop formation

In the opinion of some ET-ologists, there have been some forty different kinds of ETs loosely identified in various kinds of encounters, though the Council of Nine mention twelve groupings of them. I would hypothesise around five agencies creating crop formations (an intuition). Whatever the number, there seem to me to be various types of formations:

1. *'logical'* formations, with a distinct and potentially meaningful design-matrix to them (even if we don't understand the meaning) - Barbury, the Mandelbrot, 'Battlestar Galactica' and the 1990 Alton Barnes classic being examples;
2. *'artistic'* formations which seem to have a stronger *feeling* element to them (even if they conform to similar geometric principles) - Whales, 'Gaia', the Serpent and other graphic forms being examples.

These above two types, with possible

exceptions, are made (I suggest) by universal civilisations or their galactic helpers. However, joining in the game, we have:-

3. *addenda*, of various designs added by civilisations of our galaxy, either for getting in on the act, experimentation or diversionary tactics - often technically less elegant formations, though containing energy-information of various 'flavours';

4. *cosmic hoaxes*, made by non-earth beings who seek to obstruct evolution, confuse the 'signal' of formations and disempower humanity (for a number of cosmological reasons), and

5. *human hoaxes*, some of which seem to be pitiful-to-skilled attempts by those who are gripped by the psychology of obstruction - and a few of which might even be fortuitously and unconsciously 'channelled'.

I will not enter into specific discussion of which formations belong to which category - mainly because I haven't researched this systematically enough. Correct or not, this has been my working hypothesis for a while. It has caused me to investigate different 'inner qualities' of formations, to see whether reality as I perceive it backs up or refutes my hypothesis. I should add that I feel quite happy living without the anxious need to form final conclusions on the matter! This is a *process*.

Not all formations seem to be set down for communication. Some can be 'earth-acupuncture' applications, using earth's energy-lines for opening channels throughout the world<sup>11</sup>. In UFOlogy, patterns of flight and appearances of ET craft show strong connections with energy-sites, grids and lines<sup>12</sup>. Some channelled information suggests various ETs are working to maintain subtle energy-fields which once we

---

maintained, with the help of metaphysical engineering projects such as the megaliths of Britain, and which we need to take up again in a new way, as planetary stewards.

## A shift in our reality

However, the rub is that we may not learn the big clues until and unless we have fundamentally reformed human psychology and society - and its power-arrangements. We have remarkable and cynical ways of abusing gifts we are given! So we receive itchy, tantalising clues, until we make that change - clues which provide keys to that change.

The picture is more intricate, inasmuch as crop formations could well be *programming devices*, containing vastnesses of information and energy aimed not specifically at the us of now, but at the implicate subtle programming of the earth sphere, as a *being*, as *Gaia* - and possibly aimed also at the us of the future. The world changes we are now (reluctantly) entering involves a fundamental shift and reorganisation of reality, interweaving the 'subtle' and 'dense' spheres in a new way. Mind and heart, psyche and world, physics and metaphysics are getting closer. Our thoughts and feelings are developing a more visible power than we have previously known. The 'pollution solution' lies crucially in our heart and soul.

The *swirled* nature of crop-circles is important. This relates to the work of Viktor Schauberger, who pointed out that it is the 'cycloid space-curve motion' within rivers and all other flow-forms which upgrades the quality of water and indeed all life itself, providing a vortical energy-field within which the evolution of forms is generated<sup>6</sup>. As Brian Grist identified<sup>13</sup>, there is a connection between formation locations and aquiferous rocks - which, due to human water-extraction, are now being visibly dried out. This harms not only groundwater-tables, but also the very source-power of life itself. From a programming viewpoint, the swirling in circles, I suggest, is to counter-balance the decay-enhancing effects of human technology - tending, as it does, to run counter to the undulating interweaving of natural energy-flows.

'Obstructors' are playing the cereology game. The more potentised and alert humanity becomes, the harder 'obstructors' have to work to inhibit, corrupt or mislead us. They seem to be operating universally, though problems of the universe seem to be focused and embodied here - like a cosmic Bosnia, a cancerous expression of wider ills. Yet they have had long involvement in our history, seeding in us a basic psychology of fear and guilt,

which has activated aberrant behaviour in us, atomising human society and causing us to forget the purpose for which we came. This forgetting we have institutionalised in our personal habits, social forms and diverse cultural traditions.

'Obstructors' or their galactic minions have, I would suggest, laid down some formations and 'noise' to confuse people, to corrupt earth-energy or even adversely to affect the energy-states of unsuspecting crop-circle visitors. Obstructive psychology undoubtedly motivates some of the more insidious hoaxers and doubters - whether driven by a hurt mentality or a discrete stipend from intelligence services. However, the human capacity to learn from experience can turn this around: hoaxers are sharpening our wits.

Another wild thought. None of us, as souls, to my knowledge, began our evolutionary path here on earth. This means that you and I, ladies and gentlemen, *are ourselves ETs* - and that the separative notion of 'ETs', or worse, 'aliens', is but a mental separative device. We kid ourselves that humanity, psyche and all, evolved by accident from pea-soup and lightning, or from meteorites with organic traces! We cook up some funny rationales sometimes.

In the fullness of time, it is ridiculous to believe that we are isolated in the universe, or deny the immense available evidence of ET activity, crop-formations or encounters with subtle realms - just because it doesn't fit into our current mindset and social conventions. The chances are that we're within a decade or two of experiencing worldwide, general, public contact with ETs.

Large-scale power cuts, electromagnetic phenomena, or psycho-active thought-waves would probably be easier ways of influencing us to awaken. Yet the subtly potent educational possibilities acted out in cornfields are much more apposite. Is it not time for us to respond intelligently and deliberately to the circle-makers, whoever they truly are? Are we allowing ourselves to be caught in peripheral diversions and personal agendas owing to fear of rising to our full potential?

## The variety of ET beings

Have you ever been in a crop-formation and felt that you are being *watched*? For ETs, formations are valuable *microscopes* --they attract those responsive to their energy, to the mystery. These people are scanned, while standing in psycho-activating crop-formations. It's a nifty way of finding out who's who amongst earthlings, and how humans (largely of British sub-type) tick. Cereologists have proof that their thoughts are known to the circle-

makers. So... who's researching whom?

'ETs' are a very wide range of beings, some with physical form, others of 'energy' or 'light', some capable of being either. Some seem to have benign, some mixed, and some obstructive motivations - and only some seem to fully understand what's really afoot for us humanoids on planet earth. To add to the conundrum: it might be unnecessary for ETs to be *in situ* to create crop-formations.

What's crucial for us, however, is that each kind of ET we encounter, directly or indirectly, needs an appropriate response from us - and we need to respond from an inner position of equality, discernment and intelligence. Which obliges us to rise to our full potential and power. Not defensive power against threatening 'aliens' - for our greatest threat is ourselves and our beliefs. If anything, our power is the power of love - honed through the grinding action of pain and pleasure. That's a challenge, if ever there were one.

Regrettably, we earthlings act like a malignant tumour in the universe, in danger of infecting everyone else. We're useful to 'obstructors' as a seed-bed for breeding negative innovations, as a captive herd of five billion lost souls. And benign beings need us because of our positive potential: transformed, we could constitute a highly-experienced and qualified new presence in the universe. We also need our positive potential, to help us overcome our growing catastrophe in our home world. We are being offered a gift: while the flattened corn attracts our attention, the energy-information matrix in formations is what we're truly absorbing, unconsciously.

The purpose and message of crop formations is anybody's guess. That's the beauty of it all. This article has communicated my own understanding (that ETs are behind it all) - and I would remind *everyone* that *all* of our standpoints rest on *belief*. I hereby request cereologists to emerge from bushes, compartments and the slough of despond to hypothesise and seriously fantasise, for the sake of renewed brain-storming, on the core issues of this phenomenon, its implications and the motive behind it all. We do ourselves a disservice by obediently diverting ourselves into doubt, self-protection and disarray, just because a few souls artfully bring our view of reality into question. Crop formations are undoubtedly catalytic - the pain of unknowing gives rise to a more fundamental healing than we thought we needed.

Cereologists have now gone through three initiations: acceptance of the phenomenon, acceptance that there are no neat answers, and now, an experience of thorough confusion and disarray. This is

healthy, a sure sign of profound progress – in the paradoxical syntax of spirit. It is an open space in which a new perception of reality may be born. Let's get on with the journey.

© Copyright, Palden Jenkins, October 1993.

## References:

1. A few channelled sources: Ann Valentin and Virginia Essene, *Cosmic Revelation*, S E E, Santa Clara, Cal., 1987; Lyssa Royal and Keith Priest, *The Prism of Lyra*, Royal Priest Research Press, Scottsdale AZ, 1989; Barbara Marciniak, *Bringers of the Dawn*; Norma Milanovitch, *We, the Arcturians*; Dolores Cannon, *Keepers of the Garden*, Gateway Books, Bath, 1994. There are many more books like these, with a variety of plausibility and reliability to them. I should mention that the questionable quality of some channelled information, like the utterances of some politicians, newspapers and 'experts' does not invalidate all such information!
2. See Timothy Good's *Alien Liaison* (1991) and *Alien Update* (1993), Arrow Books, London; Budd Hopkins' *Intruders*, Ballantine Books, New York, 1987; Barbara Marciniak's *Bringers of the Dawn*, for some overall introductions. I recommend these books on the basis that all information in this business needs scrutinising carefully, and needs to be held as inconclusive though time may change this.
3. See *The Only Planet of Choice* by Phyllis Schlemmer and Palden Jenkins, Gateway Books, Bath, 1993; *Briefing for the Landing on Planet Earth* by Stuart Holroyd, W H Allen, 1977; also listen out for the work of South American UFO contactee Sixto Paz Wells.
4. Fully explained in *The Only Planet of Choice*
5. See Dolores Cannon's *Keepers of the Garden*, Ozark Mountain Publishers, USA, 1993.
6. See *Living Water* by Olof Alexandersson and the soon-to-be-published books *Living Energies* by Callum Coats and *A Schauberger Reader* by Viktor Schauberger (all publ. by Gateway Books).
7. The books by Zecharia Sitchin on prehistoric ET contacts contain dedicated research on this, though some of his points are debatable.
8. The Council of Nine explain the reasons for this fully in *The Only Planet of Choice*.
9. See Isabelle Kingston's "Word from the Watchers" in *Crop Circles --Harbingers of World Change*, ed. Alick Bartholomew, Gateway, 1991.
10. This fear is demonstrated by the current diversionary tendency towards division, skepsis and personality issues in parascience, UFOlogy and cereology. An extreme example is *UFO* magazine, Vol 8, #5, 1993, in which every article is focussed on people, not the phenomenon.
11. In the manner suggested by Tom Graves in his book *Needles of Stone* (Gothic Image) and D.H.Childress' *Anti-Gravity & the World Grid*.
12. e.g. Bruce Cathie's *Energy Grid and Bridge to Infinity* (Bellevue Books, Sunbury, Middx.)
13. See *The Cerealogist* No 5, Winter 1991/2, p. 18, *The Aquifer Attractor* by Brian Grist.

# GEORGE DE TRAFFORD

An obituary of George de Trafford, who died recently, and whose remarkable metaphysical insights made him one of the great pioneers of the circles, is written by *Delphine Star*.

ON OCTOBER 26th 1993, George de Trafford died peacefully in his sleep after a painful and protracted illness. He was only 57 years old.

By today's standards, that seems a short life but what he achieved in the last eight years of it is astounding. From the background of an important aristocratic family deeply involved in the history of Malta and the kind of life that that entails, George was suddenly hit by what seemed like a thunderbolt out of the blue jolting him into a massive psychic awakening. So great was this force that for the first few weeks his spine gave way entirely.

At that point he was introduced to Janet Trevisan and Johann Blö-meyer and this initiated the forming of the Esoteric Group in Malta.

Their combined work on the evolution of human consciousness is of cosmic importance and George's contribution is that of a mind brilliantly illuminated with Divine Geometry. Through this medium, he brought down knowledge that links the Great Pyramid of Gizeh with all the Neolithic temples and genuine crop circles worldwide. Through their specific orientations which he was given on inner levels, he was able to interpret, for the future, the knowledge of mankind's global, solar and galactic interconnections –the natural birthright of evolving humanity.

In the course of this work George became well known and respected throughout the crop circle fraternity. His dedicated experiments and revelations stood out especially with regard to the deep esoteric understanding of these phenomena and their place in the work of the Malta group.

Many will remember not only the revelatory papers read out at various important

crop circle conferences but also the very happy and productive seminars which he and Janet conducted on special trips to England –seminars which gave questioning, and perhaps confused people, tangible experience of the subtle energy fields, including ultra-sound, inherent in the crop formations, and leading them thereby into a perception of our innate ability to raise our consciousness beyond its familiar, limiting, every day level. Here was an ability which will be increasingly manifested as we access our true ascension process.

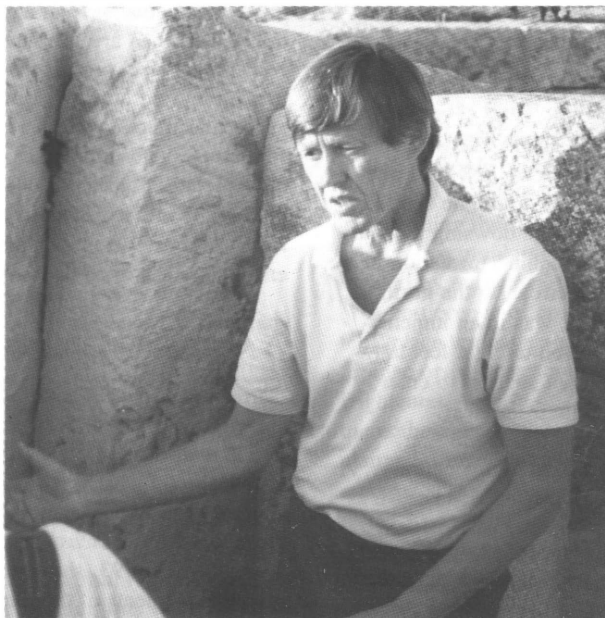
George was a unique individual –one of a rare breed– a man before his time who was unafraid to tread on the toes of entrenched belief

systems and to shake the status quo out of its complacency. Indeed he was a guiding light through these dark and difficult times, opening many minds to a new perception of the reality of unconditional love, the ultimate healing force which permeates not only the

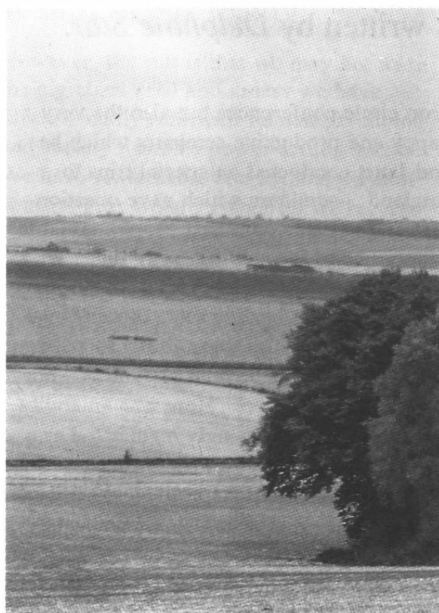
crop circles but the universe itself. It was a message he always offered to those with minds and hearts open enough to hear.

Anyone who visited Malta will bear witness to George's generosity both in imparting the group's ever-increasing knowledge and in the giving of his time introducing the ancient temples of Malta, and also explaining their encoded meaning and its importance for our evolution.

Despite the on-going difficulties of being geographically somewhat out on a limb, the work continues unabated through Janet and Johann. My own personal gratitude goes to George for all he taught me, and the shared fun and friendship which ran deep. May all of us join together in the oneness of heart that we truly have to wish George light and peace always.



# REPORTS & SKETCHES



Circle in maize near Lockeridge

## Late circle in maize

TIM DAMAR-STEPHEN, of Swindon, reports a 50 ft. crop circle in a field of maize near Lockeridge which he spotted in late October 1993 while dowsing the site of the July 1991 "Dolphin" formation near West Woods. The circle, to the north of the Lockeridge road, was in an impenetrably thick crop, seven to eight feet tall, which he tried without success to enter. The field was without tramlines.

As far as we know this is the first reported circle in maize in this country. A circle in this crop, which is also known as American corn, was reported at Milan, Illinois, in October 1990. On that occasion farmer James Lawson, who had never seen anything like it during 42 years of farming, found the perfect 47 ft circle while harvesting his crop and said that there was no sign of any path leading to or from the circle.

## A report from Bulgaria

Since the collapse of the old communist government in Bulgaria some reports of UFO activity and some of what may be crop circles have come out of that country. On July 12th, 1990, soldiers located in a village near Pleven in northern Bulgaria observed two large luminous spheres low down, apparently between the branches of some trees. It seemed as though the spheres didn't emit light but reflected it. On the next morning the servicemen went to examine the site and found the corn in the adjoining field "vastly twisted" in a

long swathe nearly 1 km long and fifty metres wide, as if by a strong wind. The tips of the plants were pointed towards the ground "as a cane", and the lower parts were charred. The soil appeared swept as if by a vacuum cleaner.

Another report from October 1989 tells of the sighting of a strange UFO by eight students from Burgas while travelling on a train. When it was getting dark they saw in the sky what appeared as a "dark strip", like an arc, in its lower part with six small gaps like windows above the arc. The "windows" sparkled with different colours from dark orange to light yellow, constantly changing. Some minutes later the students saw a "squadron" of many coloured points which seemed to pursue their speeding train, pausing from time to time.

However the most interesting aspect of this report is that several days later, after the students had arrived back in their respective homes, strange events began to happen in their houses: luminous spheres and sparkling balls of light appeared in some, together with rapping noises and the movement of objects, as occurs during poltergeist activity. This apparent "infestation" of those who have had close UFO encounters has often been reported before.

## A German Mandelbrot

German newspapers last July reported the appearance of a Mandelbrot crop formation in a wheatfield at Peissen im Saalkreis near Halle (in what was formerly East Germany). Our photograph, which is reproduced from *Eichsfelder Tageblatt*, dated July 23 1993, shows the three principal elements of the Mandelbrot: the cardioid, and two smaller unequal circles in line. There is no sign of those even smaller circles, and also tiny ones, contiguous with the perimeters of these three elements in a true Mandelbrot, and which appear as characteristic protuberances from its main body. However it is most interesting to note that this Mandelbrot's principal axis is athwart the tramlines, rather than directly along a tramline, as was the case with the Ickleton Mandelbrot of August 1991.

Its appearance in an area not known for crop circles predictably prompted the usual speculation as to its provenance. Had this symbol of modern Chaos Theory been produced by some natural phenomenon, or was it a signal sent out by the living earth (*superorganismus Erde*)? Was it made by UFOs, or by human hand? The debate continues...

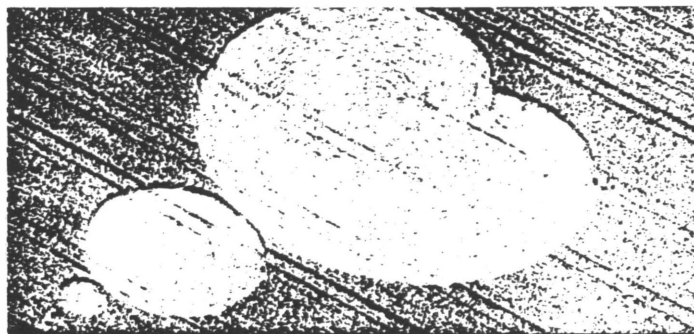
## And Bavarian circles

Crop circles also appeared for the first time in Upper Bavaria in July 1993. This report on circles found in barley at Otterfing, 35 km south of Munich, is supplied by Johannes Heimrath of Wolfratshausen:-

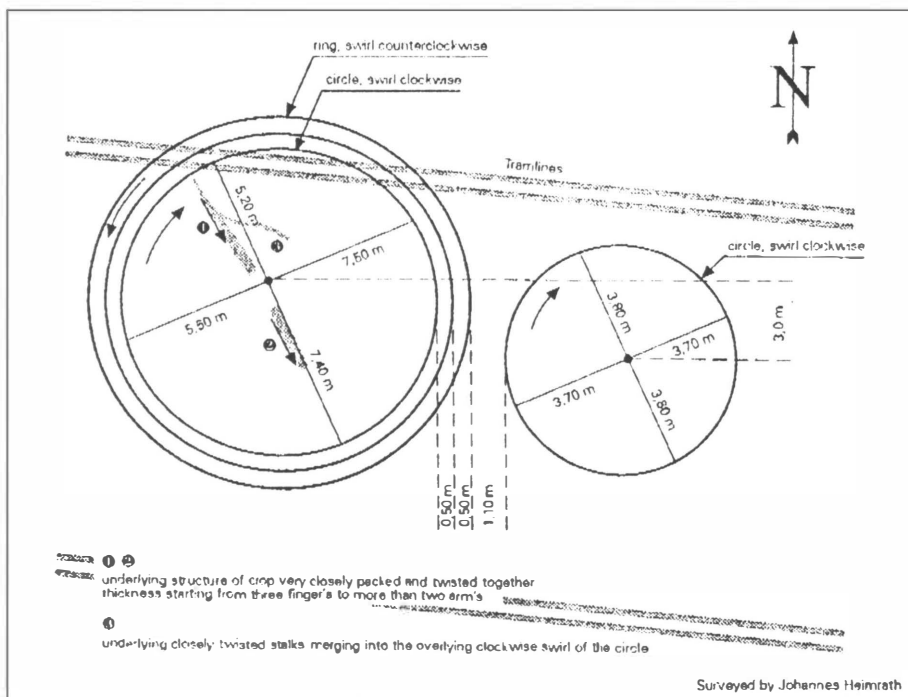
On Thursday, 15th July, I inspected the circle together with farmer Hans Thoma and other witnesses. Though several days old, the formation was still in very good condition. Only in the ringed circle could one see traces of visitors. (In Bavaria people have great respect for cornfields and do not trample through them!) The smaller circle lay absolutely isolated from the tractor lines and untouched amidst undisturbed crop. We did not detect one bent stalk which would have indicated that someone had walked through the crop.

The crop was laid down perfectly, concentrically swirled clockwise in both circles and counterclockwise in the ring. After measuring the formation we found a structure similar to the often reported "construction lines": an underlying band of crop very closely packed and twisted stretched from the rim of the circle to the centre of swirl (offset remarkably from the geometric centre) and continuing a bit to the other side.

The swirl was concentric; no irregularities in the evenness of flow could be seen besides the offset of its centre in the ringed circle. The other circle had its centre of



The German Mandelbrot -- in a field at Peissen near Halle.



Crop circle formation near Otterfing, Upper Bavaria, Germany, July 1993.

swirl exactly over its geometric centre and was slightly elliptical by about 20 cm.

Dowsing the circles had strong effects on different people though no clear overall pattern was established. The ringed circle seemed to possess an energy pattern of four concentric rings evenly spaced inside the circle. The ring itself seemed to have four cardinal points of high energy.

As I am well informed about the whole hoaxing theme and have some experience with the circles, I strongly suggest that this formation is genuine. Besides the impression the formation made itself and the absolute absence of any detectable trace of anyone going, jumping or stealing through the crop, the mere placement of the formation speaks against a hoax. The field lies in flat and rather unattractive surroundings. Unless one knowingly looks for the circles the formation cannot even be recognised from the fast trains on the railway which passes the field. I doubt that more than a handful of people in the region even know about the crop circle phenomenon. If it were a hoax, the poor guy who made it went to a lot of trouble solely for his own delight since chances of it achieving publicity were slim. Besides some curious farmers there was no excited audience at all!

### Circles in Mexico

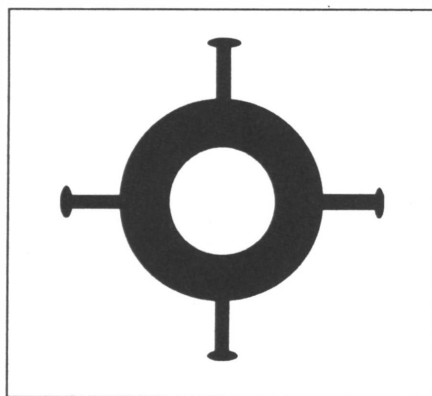
Atitalaquia is a small town just 8 km from the city of Tula (which is 400 km north of Mexico City). It awakened on a hot July morning this year (1993) to find several precise circular markings on a soccer field beside the town hall. The four circles

were measured by physical engineers Manuel Guerrero and Victor Sánchez; their sizes ranged from 3.30 metres in diameter to 7.20 metres (22 ft).

When witnesses were interviewed, it was learned that, at 3 a.m. on July 18 1993, a giant object was seen rising above the soccer pitch. Three witnesses notified the town hall immediately, one of them placing their hands on a glowing "foot-print" left behind by the object without any ill effects. As we know, these bizarre circles have appeared in the U.K., Japan, Hungary, Canada and the U.S. Will Mexico now be added to the list? (Credit: R.A. Palmeros, CEFM, Mexico)

### Radstock crop circle

From the *Mendip Journal* (19 Aug 1993) :- Last Thursday morning folk overlooking a cornfield south of Clandown near Radstock were surprised by the overnight appearance of a perfect circle with four sym-



The Clandown, Radstock, crop formation.

metrical legs in the middle of the field. Crop circles at Radstock signified that Martians had landed on Wednesday night, or that's as some would have us believe!

The appearance of circles followed reports that lights had been seen over Radstock on Tuesday night. The lights were described by a Peasdown housewife as being about twenty in number, were small, all blue, and in a big circle.

Other witnesses claimed that lights were seen over Clandown at 10.15 p.m. They were described as patches of light in two rotating circles, one clockwise, the other anticlockwise, and were travelling towards Bath. All witnesses claim they were entirely sober at the time of the sightings.

The Radstock crop circle was 60 yds in diameter with four equally spaced "stanchion legs" extending some 15 yds from the circle with large "feet" at each end.

Speaking with a lady whose property overlooks the field, she was quite adamant that the circle was not there the evening before, but that it was immediately obvious the following morning when she drew her curtains. Investigations revealed no tracks into or out of the centre of the field, or the circle, and as far as *Journal* reporters are concerned the whole thing remains a complete mystery.

Some people believe that the circle was caused by a spaceship invisible to human eyes landing there. Others incline to dismiss it as a prank claiming the circle was created by a tractor or some farm vehicle.

A conference of crop circle enthusiasts took place ten days ago in Bath. The conference organisers admit that people do get frightened, even to the point of describing the enthusiasts as Satanists, but, it was claimed, they (the enthusiasts) are simply committed to finding out what it's all about.

On Friday evening, over a pint, the *Journal* showed the photographs of the circle to three university graduates who had just returned from a visit to the French Alps. Having first established that there had not been a young farmers' ball or barbecue in the vicinity, they were fairly certain the circle was caused by rutting deer. They explained that most likely four does in season wandered into the field to feed and were surprised by a stag; a mating chase ensued and the does circled until one by one they submitted by leaving the circle. This explained what appeared to be the "legs of the spaceship" and each area which resembles a foot of the stanchions was where copulation took place.

Who knows? -and as far as the farmer is concerned- who cares? Before further investigation could take place early on Friday morning he harvested the crop with his first cut being straight through the centre of the circle. (Credit: Stuart Dike, Bath.)

# THE GREAT KEYHOLE, OR THE EARTH GODDESS

*John Haddington* explores the symbolism of an almost forgotten 1990 pictogram in the north of England.

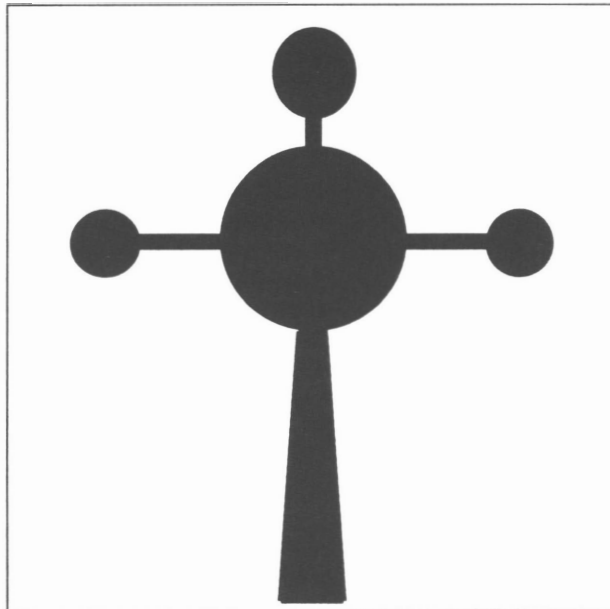
IT HAS OCCURRED to me there is a badly neglected crop circle from 1990 that deserves our closer examination. This pictogram appeared well outside of the fashionable Wiltshire/Hampshire area where the majority of formations appeared that year. I did not spot its relevance until George Wingfield showed a slide of this outlying formation during his talk at the Conference in October. This pictogram interestingly enough appeared at the end of the 1990 season near Manchester, immediately above a coal mine. There are no ancient sites in evidence at, or in, the surrounding countryside near this site – just a redundant coalmine which is now a museum.

Thus the pictogram indicates the mine that descends into the Earth. In truth George's slide was only of a drawing of what had appeared on the ground, but nevertheless it suddenly became clear to me exactly what it represented. It was not a Celtic Cross, as mooted by Colin Andrews and George Wingfield, for as a design for a cross, the base was out of proportion to the rest of the figure. Once you realize that the image is actually that of a keyhole, the proportions are absolutely correct. You then have to ask yourself why a keyhole, and why there are three other little keyholes arranged around the head of the main Keyhole, which could also be interpreted as representing a female figure.

We had all rather assumed that the Alton Barnes pictogram was the great Archetype for 1990. This was largely due to the fact that it appeared in Wiltshire, the heartland of Cerealogy, and it was a double dumb-bell formation interpreted as emphasising the principle of duality. But there were another two very similar formations nearby, one at Stanton St Bernard, and another at West Kennet, thus making a set of three similar formations. On reflection, neither of these could possibly represent the Archetype for the year. There was an element missing from what had originally appeared to be a promising hypothesis. We have to explore further to find the correct formula. I

would like to suggest that what was being exhibited in 1990 as the Archetype for Duality was SEX, or the procreative principle.

The THREE double dumbbells of 1990, with the double prong key symbol represent the male principle, fully equipped with a penis. There were two pictograms to the south of Wansdyke, the great earthwork that protects the sacred landscape dedicated to the Earth Goddess, while the West



*The Great Keyhole crop formation at Astley Green, three miles west of Salford, Manchester. Found in August 1990, the central circle was 85 ft diam, the top circle 40 ft diam and the other two 30 ft diam. The long wedge-shaped tail measured 115 ft. Details supplied from the CPR database*

Kennet formation was aimed at Silbury Hill which represents the womb of the Earth Goddess; this hill lies within the sacred landscape of Avebury. Interestingly the double prong symbol, which I now take to represent the penis, appears in the top half of the two formations to the South of Wansdyke, but in the bottom half of the formation at West Kennet.

I feel that there must be a reason for this, so let me speculate on this problem for a moment. If the top half of each formation represents "The Above" or higher nature of man, then it would be inappropri-

ate for a penis symbol to be placed there as the soul or spirit in a pure state of mind should not be preoccupied with sex or objects of desire. The key or penis symbol should be in the lower half of the formation representing "The Below" or physical nature, as in the West Kennet Formation, which was placed within the bounds of the sacred area. It was shown to be concentrating on procreation rather than recreational sex, for it pointed to the vessel of procreation, the womb, represented by Silbury Hill, rather than an object of desire, as is represented by the White Horse.

The great Keyhole at Astley Green with the three little keyholes around the head, represents the female principle of Nature or Earth Goddess, and is equipped with three vaginas. Thus we now have a complete archetype for sex, the male and female aspects of Nature. Nature seen as a whole

has two sexes and is the self-regenerating life-force encompassing everything living that exists on Earth. An hermaphrodite, possessed of both sexes, needs no mate to bring forth its young.

There are a variety of examples of this in nature. Snails come first to mind, and as I have previously written about snails being represented in the crop circles I will demonstrate another astonishing fact. Snakes and iguanas have two penises but a snail is unique in nature in that it is possessed of three penises, and when it does mate with another snail, it inserts these into the three vaginal passages of its mate. Two of these penises are capable of shooting poison darts into its mate to kill it. The genitalia therefore allegorically, belong to the two aspects of Mercury, the Hermaphroditic God of Nature. I am sure there must be other interpretations, and I would be happy to hear from anyone else who has alternative suggestions.

The Romans who had a special devotion to Mercury, often depicted him as having three

penises. The reason for this has never been very clear, but maybe now one is being shown something that the Romans knew. It was common practice for the ancients Greeks and Romans, to place a Herm, or representation of Hermes/Mercury, the patron of travellers, at crossroads where offerings could be made for safe passage or for fertility. These Herms often displayed erect penises and they would have been a common sight in those days along the roads. Maybe it is a bit clearer now why the Great Snail appeared in East Field at Alton Barnes.



---

There is another interesting thought that comes to mind. The great Keyhole appeared in 1990, a season before the insectograms / dodmanograms had been identified as such, before the Barbury Castle Triangle, and two seasons before the Necklace formation that gave us the keyhole opposite the double pronged key. Thus, by appearing well outside of the current area of investigation, the Astley Green Keyhole went almost unnoticed and therefore did not attract the attention of those who would claim to have made the pictograms in Southern England. The insectograms (snails), were claimed by D & D. The Necklace was claimed by Jim Schnabel. These formations are all part of the true phenomenon as I have previously illustrated. The people who claim to have made these pictograms are simply not telling the truth and the great Keyhole proves it, for it came before most of these gentlemen were on the scene, and in an area that none of them has ever visited, and yet it is an integral part of the encoded formula, as I have just illustrated.

If you follow this thread, it becomes clear that Nature is communicating something to us, but we must be vigilant and aware of what is going on. It is no good getting depressed and thinking everything is a hoax. There is a true phenomenon and as time goes on more will be discovered about it. These images are being painted onto the landscape canvas of this country to inform us about certain aspects of Nature. There are undoubtedly many more interpretations of these formations, and probably other codes written in the circles which are as yet undecoded. As time goes on, those people who are working on this problem will undoubtedly succeed in bringing these to the light.

The circlefakers will never bring anything useful forward, and indeed are grossly interfering with the study of the phenomenon. Precious time and money is wasted studying completely irrelevant formations, for the circles must all be recorded in detail irrespective of what one's own personal opinion of them happens to be. It would be tragic to miss out on some important information due to mass pessimism and negative thinking causing a drift away from the study of the crop circle phenomenon. It is all a matter of focus, rather like the cover of this issue of the magazine. To most people, at first glance the cover is just a mass of random dots and squiggles, but when you are told how to focus behind the image, the three dimensional picture suddenly jumps out at you. This is what you must do with this mystery—focus beyond the immediate reality of what you see. Then something else reveals itself to you from within the initial chaos.

---

## BOOK REVIEW

---

### A REVISED 'MYSTERY SOLVED'

**Brian Grist**

---

**CROP CIRCLES: A Mystery Solved, by Jenny Randles and Paul Fuller (Robert Hale, £6.99 pbk).**

---

THIS TITLE CREATED a bit of a stir when first issued in the Summer of 1990. Outspoken in their intent to provoke strong reactions from their readership, Randles and Fuller expressed their "rational" approach to the subject in a manner which probably alienated as many would-be sympathisers as they may have wished to convert. The authors clearly felt that they were in occupation of a defensible bunker on an ideological battlefield and were not about to mince words with their perceived opponents, identified as those who thought crop circles were attributable to otherworldly causes. On close examination, however, *Crop Circles* proved to be a book of considerable substance. The general thrust of the work was that the mystery was resolved by the pairing of two probable "solutions"; a combination of human hoaxing and Dr. Terence Meaden's proposed Plasma Vortex.

I readily admit to having never subscribed to the authors' championship of Dr Meaden's ingenious and intellectually seductive attempts to marry crop circles to a previously unrecognised atmospheric mechanism. Whether or not it was "rational" to declare their allegiance to an hypothesis which tended to stray too far, for my liking, beyond verifiable fact and into the realm of scientific mysticism is a debatable point of course, but Randles and Fuller were admirably consistent in their presentation of the evolution of Meaden's theories. They not only understood his work and some of its shortcomings, but argued his case with a lucidity that was often absent in Meaden's own writing. To this end, they provided the most coherent account of the Plasma Vortex theory published to date. Furthermore, their comprehension of Meaden's work enabled them to apply the theory to not only crop circles, but UFO sightings as well. This was a bold, impressive move which found them venturing into territory where Meaden himself had not deigned to tread and was an acknowledged highlight of the book. It was also recommended for

its detailed history of the early years of circles research, its presentation of eye-witnessed events, and reportage of pre-1980 circles.

The book also contained the most informed body of evidence regarding hoaxing available to the public prior to the high-profile confessionals of Doug Bower and Dave Chorley. It is high time that credit is given where credit is due and it has to be said that for many long years Fuller in particular was a lone voice in the wilderness - enduring a considerable degree of ill-will for wishing to illuminate a reality which too many others preferred to dismiss out of hand. My sole reservation concerning this near-heroic stand is nevertheless a profoundly serious one: that in his well-founded desire to help reduce the amount of wilful damage done to our farmers' fields by revealing hoaxing methods, he may have unintentionally aided and abetted further vandalism by providing invaluable technical insights for the would-be hoaxer. It's a Catch-22 dilemma, of course, of which I'm sure Fuller is acutely aware.

For the record, the new version comes with a partially revised and more tightly focussed Introduction which certainly benefits for being shorter. Pages 40-220 (the bulk of the book, in fact) are, however, identical to those of the first edition. That leaves a total of 37 entirely new pages, consisting of a completely rewritten Chapter 2, concentrating on the early-90's growth of "New Age" mystifications and the traumatic impact on all factions of recent hoaxing revelations. (It is instructive to note the authors' declared distancing of themselves from Meaden's misguided struggle to adapt his theories to accommodate pictograms in this respect.) There is also a new and most engaging Afterword which offers more evidence of eye-witness testimony concerning an invisible wind-related agency and further pre-1980 incidents, demonstrating that the phenomenon cannot be entirely explained away by hoaxing. The contention is that there remains a 'genuine' phenomenon which hoaxing has revealed to have been rarer in incidence since 1980 than previously thought, and that Meaden's Plasma Vortex in a more formative incarnation still serves as a feasible model for explaining simple circular structures.

Although not in agreement with everything this book says nor the manner in which it's put, I consider it to be one of the most relevant to have been published on the subject and its reappearance serves to underline its status as a core text for anyone still interested in exploring the parameters of a debate which may not yet be over.

# CORNFERENCE '93

*John Haddington reviews the 1993 Cornference held by The Cerealogist in Dorchester.*

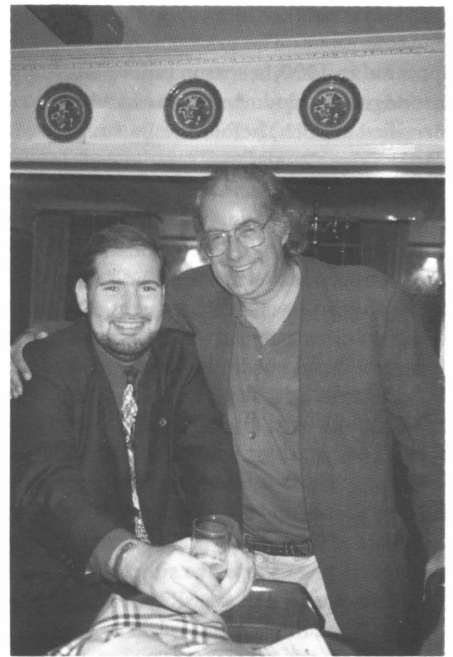


*John Michell+blazing torch; Christine Rhone*

AS THIS WAS the first large meeting that I'd organized anywhere, it was with some trepidation that I set out to get last year's Cornference together. I was enormously lucky to have the help of many people with hands-on experience of these things to help me in the organisation of the event. Special thanks go to Deborah Hall who volunteered to be the Event Secretary and on-site manager. Michael Glickman and

his sons Ben and Max for looking after the door, and to the excellent staff provided by Dorchester Town Council in ministering to our every need. Thanks and appreciation for all advice and help to Richard Adams, Christine Rhone and John Michell, who organized all previous Cornferences and whose valuable experience helped mould the events into a good programme.

It was lucky that I managed to get Maurice Cotterell at very short notice to come and talk about his discoveries concerning the Palenque sarcophagus lid. Many people have commented on this presentation, some saying that they see no relevance to the crop circle phenomenon. I found it disappointing that there was not enough time for Maurice to tell us much about the twenty stories themselves, but for my part maybe the most interesting thing of all was the knowledge of the mechanics of the sun cycles that the Mayans had at such an early date. The reason that I had for including Maurice Cotterell in a cornference about crop circles is this: You must look beyond the crop circles to see what else is coming out of the woodwork at this time. This is a time of revelation when many different things are being brought forward for our elucidation. That the Sarcophagus lid should only be decoded now in the run up



*Michael Hesemann and John Haddington.*

to the start of the new millennium seemed to run in parallel with the arrival and decoding of the glyphs and understanding the crop circles. That is the point that I was trying to make.

Busty Taylor, James Chapman and Barry Reynolds gave a good account of themselves with slides and words concerning the circles that they had observed in the past season. This was what the audience of some one hundred plus souls had come to see and to hear researchers' comments. After lunch Serena Ronay-Dougal gave a talk on the pineal gland and the development of the chakras, rather than the advertised talk on Canadian crop circles. More information on this subject can be read in her excellent book, *Where Science and Magic Meet*.

Roger Taylor and Paul Vigay demonstrated some of the anomalies that they had found with their electromagnetic devices in the circles. Interestingly the results of these experiments are by no means clear, nor do they, as yet, add up to a litmus test for genuineness. However, there seemed to be a general feeling from the speakers that they were coming close to finding some kind of residual energy in the circles which they had examined in the past.

Mary Bennett gave an enthusiastic appraisal of the circles and the psychic energy that could be either dowsed or felt present in them by those sensitive to such energies.

Michael Glickman presented the Bythorn Mandala and an architect's view on its construction. This was for him, and a majority of the audience, the circle of the year. That anyone could doubt its veracity given the complexity of its design and lay



*George Wingfield & John Martineau. No prizes offered for suggestions of what's being said*

was for Michael a complete impossibility. The one person to have laid claim to having fabricated this formation had submitted plans for its design and construction that did not add up to what had been observed by at least two independent surveyors of the Bythorn Mandala. However, this did not convince George Wingfield who was the recipient of the claimants design and plans, although he did not actually visit the site himself. Sadly this disagreement has caused a rift between the Editor of this magazine and Michael Glickman, who has now declined to continue his excellent column "New Swirled Order". Letters of protest to Michael please. In allowing Michael extra time for his presentation, I was unable to give my own, but it hits the columns of this magazine in the present issue.

The Avalonian Choir gave a superb



*Maurice Cotterell spoke on the Palenque Lid.*

concert as always, with songs from the Balkans and South Africa. The official handover of *The Cerealologist* to George and myself by John Michell and Richard Adams was symbolised by the presentation of a blazing torch and sacks full of letters needing replies. The evening was rounded off with a performance by Tim Hall's band.

Sunday was kicked into shape by Jürgen Krönig, whom we all thought was still in Germany. Jürgen's view of mass hoaxing by teams of identified and unidentified hoaxers was tempered by a denial from a Wessex Sceptic that they had done any comprehensive hoaxing in 1993. There was also the question of Jim Schnabel's "design behind the stamp", the idea for which, I informed him, was gleaned from an envelope sent to him by myself, shortly after last year's Cornference (see Editorial Notes, p. 26). The hoaxers case now started to look distinctly frayed at the edges. Andy Collins told of the aerial anomalies

that he had recorded on film. Stanley Messenger gave us a brilliant view of the mystics standpoint on the big picture that is unfolding and George Wingfield showed us examples of the many other phenomena that the world cannot explain, including one gory photograph of a stigmatic that would have made a suitable Benneton ad! Michael Cole spoke on awakening the inner man, Grant Wakefield's excellent video on the circles was accompanied by Vanessa Vine on the dijeridoo, and the evening finished off with the "Open Mike" (which was only marred by a verbal attack on a pair of supposed hoaxers, who had paid their entrance fee like everyone else).

My thanks again to all contributing speakers, stall holders, and helpers who made the 1993 Cornference possible. I hope that all of you who attended as audience enjoyed yourselves too, and will come back again in 1994. --J.H.

## Reflections on the Cornference

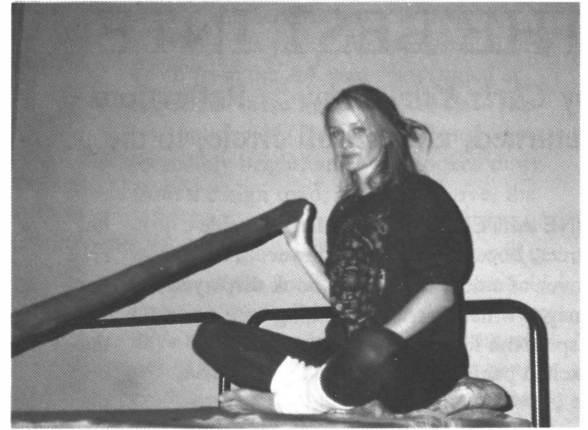
*From Mrs Anna Appelmelk*

I attended the recent Dorchester Cornference, which for me was the best crop circle conference I have been able to come to.

Following from this, I would like to make some constructive reflections on the Cornference. I refer to the Sunday session "Open Mike". John Haddington, as Chairman, stated clearly that this was to be for 3 minutes on any corn circle related aspects that the contributor wished to elaborate on. Michael Glickman, after the first two speakers kept clearly to 3 mins, chose



*Michael Glickman waves goodbye.*



*Vanessa Vine -- dijeridoo virtuoso.*

to challenge possible hoaxers to "show themselves" in apparently unlimited time.

What developed from this was a type of "inquisition". This was not the place for this type of confrontation, whatever the feelings and frustrations that genuinely lay behind it. Michael did not keep to 3 minutes, which was the limit clearly stated.

However to witness this was unpleasant and contaminated an otherwise inspiring Cornference and the previous Speakers' Panel. It was the call from the feminine when Barbara Davies intervened that brought some balance and objectivity into the situation. I was unable to voice my feelings due to laryngitis, although I raised my hand just before Barbara took the mike.

Lastly, the issue of time. It was about 7.30 p.m. when the Cornference ended on Sunday. The previous year there was an earlier ending which suited many people who had long distances to travel. Several people I talked to had reluctantly to leave earlier than they wished, which conflicted with wanting to see the beautiful videos by Grant Wakefield. Perhaps, next time, such videos could be shown on Saturday evening as there is more time available then.

I reiterate that for me this was an exciting and hopeful Cornference, apart from the last sour note.

ANNA APPELMELK

1 Strathmore Cottages, Walkley Wood,  
Nailsworth, Glos. GL6 0RZ

## The MYSTERY of the CROP CIRCLES

The most complete documentary  
of the Crop Circle phenomenon  
ever produced on video(124 min)

By Michael Hesemann

Order from Gloria Wingfield, Hearne House,  
North Wootton, Shepton Mallet, Somerset  
BA4 4HW. Price £19.95 + £1.20 p. & p.

# THE BEST INTENTIONS

by *Chris Kenworthy*. Reflections of a hoaxer who has returned, almost full circle, to the genuine phenomenon.

ONE AFTERNOON IN a London side-street, I became a True Believer. The cover of a new crop circle book displayed images which stirred something within me. I spent the following days in a state of excited panic, knowing that I would have an important part to play in the phenomena. Over a year later, I knelt by a wheat field and began to bend the stalks down. Within seconds I became a sceptic, and a few months later, a cynic.

Hoaxing was dangerous for me, because for a while the techniques of crop-conjuring took hold, and led me away from my original intentions. I found a new faith in Doug & Dave and Schnabel, and felt that I was a member of the gang, ridiculing the True Believers. I gained pleasure in seeing people fooled by my formations. Thankfully, this only lasted for a short while. Several strange events led me back to the genuine phenomenon.

The danger with hoaxing is that its addictive quality, and the desire to attain artistic perfection, can lead you astray. Despite this, even a True Believer can hoax circles. Indeed, while circles hoaxed by CREEP are nothing more than deceptive trappings, those laid out by people with spiritual intent are genuine.

Admittedly, most people hoax circles with shabby intentions. Some obviously know little of the subject and think they can bang out any old symbols. (An example was the mess visible from the pub window at Avebury last summer. This was so foul that, in broad daylight I added a pristine grapeshot, a small distance away, so that visitors would know what to look for in future.) Other groups believe that by hoaxing they can help science to distinguish fake from genuine. Some perform nature magic. Some try to debunk the phenomena, to protect their orthodox beliefs. Others work in the name of art.

The latter should be producing the best formations, but in truth, their works are often hideous. Art should have high intentions, yet Jim Schnabel and the other "celebrity" hoaxers have turned crop circles into shallow entertainment. By placing their circles beneath prominent viewpoints, alongside motorways, they reduce the pictograms to a silly gimmick - no doubt this is partly their intention.

I do not deny for a moment that creating a crop circle can be an artistic experience, but only when the heart is genuine. Without heart, it is merely craft. If the

hoaxer is only trying to make an impressive "hoax", it will appear to be exactly that, (e.g. the 1992 Froxfield Fake).

Many observers of crop formations feel they are sensing more than they can understand, a feeling that they can't quite place. In this way, crop formations are acting as the highest art, to those who are prepared to observe them with an open mind. When viewing modern art, many people say, "I don't understand it," and so close off. The result, due to market forces, is that we are flooded with irrel-



*"...laid out by people with spiritual intent"*

evant, shrink-wrapped watercolours in cheap "galleries". In terms of crop formations, Schnabel and his pals provide the bland "cotton-wool art" for the masses, while the true art thrives alone. Art must always have a higher atmosphere, mood, spirit and intent than the desire to fool people and then claim glory.

Part of the genuine crop circle process is secrecy. If I was simply to list the formations that I have swirled, I might be able to grin with pride, as Schnabel does, but the art itself would have failed. Whatever the A-Team may be, terrestrial or otherwise, I can't imagine them ever seeking photo-opportunities. The beauty is always that they have worked in absolute secret.

Secrecy makes the phenomena powerful. While people believe that a formation may be genuine, the work will evoke more profound feelings than if everyone knows it is a fake. This may be why the CREEP hoaxers revel in their publicity, to reduce the power of the whole phenomena, by making them appear to be solely man-made, undermining those who dare to believe. The casual observer, afraid of

scorn, will simply turn away.

Whatever their origins, crop circles have profound effects, but any physical object can achieve this, in a certain light. One afternoon, a day's walk from civilisation in the Scottish Highlands, I dipped my white cup in a stream. As the sun-sparkling water fell from it, I felt a deep, moving peace. This was nothing to do with the cup or the water; they were only a key to what lay within me. Crop circles cannot be anything in themselves, but they can act as entry points to our souls.

If it was proved tomorrow that every formation had been man-made, I would not despair. This would take none of the mystery away; the tricksters, such as Doug & Dave and CREEP have not produced the moving works.

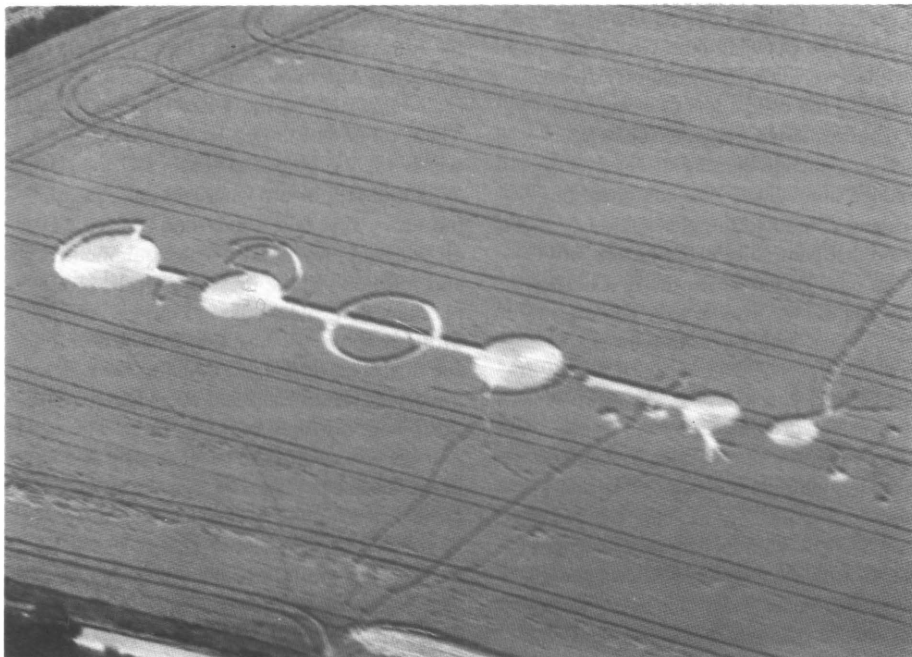
The precedent for human involvement with crop art may have been set by artists such as Richard Long and Andy Goldsworthy, who have worked in harmony with nature for years. When Goldsworthy produced a leaf-sheet sculpture, he stuck the pieces together with spit and skill, rather than resorting to glue. Richard Long, when making a quarter mile line on the landscape would not dig it up, or use tools, but would walk the line thousands of times, until his feet left the impression. Equally, the crop artist should form a pictogram gently, bending the wheat without breaking it. Those who mechanically trample with garden rollers are missing the point, having no contact with the medium.

A spiritual hoaxer should try to make work appear genuine; this is essential if the formation is to evoke deep feelings. I visited a Wiltshire formation in 1993 where the designer hadn't even bothered to cover up the pole marks in the centre, which made the tramp into the field a waste of time. Hoaxers should not leave a trace.

Our methods should be exact and subtle. It is possible to move through ripened wheat without leaving a mark. It is a learnable skill, but I will keep the technique secret for now. Maybe there is some magic involved, but when intentions are pure, it seems to work.

I do not believe that we should cut rough messages into grass (as with Erik Beckjord's *Operation Magpie*), appealing for more formations. "Show us another miracle", we seem to be crying. We should be secret and careful, working gently, in the same way that the true Circlemakers do. When in Rome.... This may be the only way to help the formations to take another quantum leap.

Many people are so angered by hoaxing they refuse to take it seriously. Michael Glickman *et al.* beg us to have an open mind, and then firmly close their own off: *Hoaxes don't exist, except the ones we*



The unattractive and inartistic "Froxfield Fake", made by CREEP in August 1992.

definitely know about, but they don't count. Even if some of the circles are being swirled by earth devas/aliens, I don't think we can just reject hoaxing as being only troublesome and irrelevant. It's far better to admit that we don't know what is going on. We should have faith that we can help the phenomena, and that the phenomena can help us, but we shouldn't look for endings. We should concentrate on the moment of being.

Those angered by hoaxing have little to worry about, because I don't think we could ever hoax the equivalent of Barbury Castle. It could be done, in about three hours, with just two people and manageable equipment, but NOT with those particular directional flows, in those particular relations to the tramlines. Try to work out how it was done, in absolute detail, and you'll see what I mean. If something like that returns, we can all think again. In the meantime genuine hoaxing can help, rather than hinder, our development in relation to cereological activity.

The banner of science is held aloft, as "proof" that something beyond normal understanding is going on. How ironic that so many True Believers flock to the files of conventional science for reassurance, (while rejecting all hoax involvement out of hand). On the one hand, I am tempted to say that science may be irrelevant, because there is little point in testing that which must be viewed with heart. Can you imagine trying to determine the meaning behind the Mona Lisa's smile by analysing the paint? On the other hand, I feel that we should postpone the scientific research, because it is so poor. We know so little about the way wheat reacts when

folded down, but when chemicals are made strange by crop circles, everyone applauds (because the result is one that they favour). These statistics become more important than the meaning of the images themselves. "See, it's true, we were right", they say, with a tone of insecurity.

A large circle that I made in a field close to Preston is a case in point. When the field was ploughed over in late September, my circle was still visible, as the soil had turned slightly white. If somebody had analysed the soil, the results would no doubt have been interesting, showing huge chemical changes - a genuine circle!

If Gerald Hawkins' interpretation of the 1991 Milk Hill ciphers is correct, then *OPPONO ASTOS* is "I AM AGAINST HOAXES". But it could mean: "I AM AGAINST SCIENCE". I am not against science myself, but unless it is more thorough, it will be of little significance to the circles' effect. Apart from anything, who is to say that the true Circlemakers use some huge, violent energy which leaves a physical trace? They may be as subtle as the best hoaxers, coaxing the wheat down.

Although I claim that hoaxing can be a relevant part of the phenomena, it may be suggested that we are nothing but vandals. I find this ironic from a community of farmers who have vandalised the natural countryside to make money, and who corrupt the soil with chemical sprays. The returns from a crop circle, in terms of human growth, far outweigh the slight damage to the crop and the farmer's pocket. (Having said that, I wish CREEP would give up their ugly formations, because few people benefit from them).

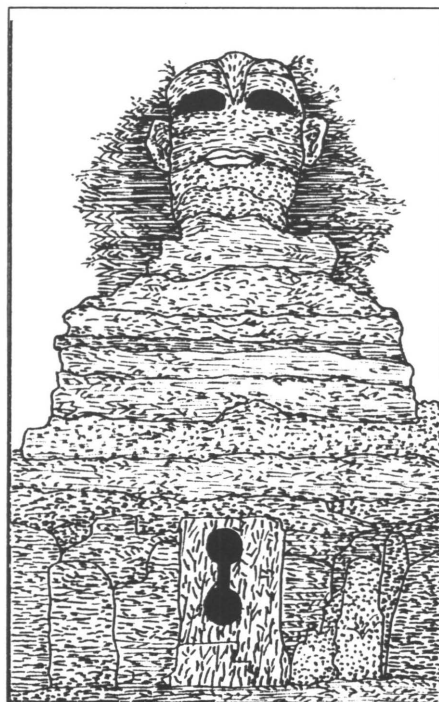
I feel certain that what I am doing is not

wrong. In the middle of my hoaxing activities this year, I found myself driving south from the A4 road, unplanned at night, and there I saw a lightform. This was not one of CREEP's balloons. It was incredibly bright, and, as I looked down from the high road, it skimmed over the crop surface at about 60 mph, the wheat beneath it glowing yellow. It followed the ripples of the land to the edge of the field, then vanished. I made a circle there some days later, under its path. I don't know what I saw but it was clearly not a car, aircraft, or torch. Eyewitness accounts rarely sound credible, but I know it was not ordinary, and it helped me back from the realm of CREEP, to the genuine phenomena.

I left Wiltshire this year and returned to my home town, and decided I needed a break to gain some perspective. On the Isle of Skye I found a grassy beach, close to a standing stone. A caravan was parked there, but quietly in the dark, I made three huge pictograms with pebbles, and a massive stone circle with heavy rocks. The occupants of the caravan emerged at dawn, somewhat bemused. The crop circles' effect works with stone, as well. Before long, small crowds were rolling up to take in the moment, to sense something they weren't sure of, and perhaps for a second, to reflect on themselves.

I will continue to make formations with the best intentions. If these heal people or make them weep with joy, I will no longer laugh at them, but will feel that my work has succeeded.

## CORNELIA



The Great Cereo-Sphinx of Wessex : One of the Seven Wonders of the Modern World

CHRISTINE RHONE

# LETTERS

## The Phenomenon is still there

From Mr Joachim Koch and Mr Hans-Jürgen Kyborg

Since the summer of 1989 we have been studying the crop circle phenomenon using whatever material was available to us in Germany. Although we had scientifically investigated UFO sightings and such events for many years and were therefore familiar with unusual phenomena, nobody here had then heard of the crop circles.

Very soon we recognised the immense importance of the phenomenon since it seemed related to the UFO phenomenon in a broader sense. As the number of publications increased and we gathered more information --especially Colin Andrews and Pat Delgado's first book (*Circular Evidence*), we were able to study the phenomenon more systematically.

Obviously there was a meaning to it, as others recognised. The only possible explanation for the existence of circles and formations in the beautiful landscapes of Southern England was: *communication*. During months of hard work and painstaking analyses, we found some clues to a message that was possibly shown to all of us. So we left our armchairs in 1991 and started trying to verify our ideas through experimental work on the spot --in fields in Wiltshire. We should emphasise that we worked as private investigators in England and not for any organisation; we remained open to anything that might happen. We never made any hoax or altered any genuine formations. And we would like to stress that we don't consider the experimental formations --which we created a single one of each summer with the farmer's permission-- as a "hoax".

Without difficulty we made contact with many researchers and farmers, and, with some, developed a sincere and trusting relationship. We know this is not always easy, even for us as Germans. We feel honoured and would like to thank all who supported us through these years and provided us with information.

From the start we decided to stay in the background of the crop circle scene, though we've been partly involved in many of the main positive activities and events of the last three summers around the Avebury area. We didn't risk becoming poisoned by certain developments in the circle scene that started some years ago. Fortunately we remained set against self-importance, and didn't burst out with our new results when we seemed to be on the right track. While some people started to sow malice

and distrust, and the hoaxing increased, and while the Beckhampton Group (of which we were foreign members) disintegrated and the campaigns of debunking and disinformation began to take effect inside and outside the circle scene, we remained untouched. We continued our work and continued to get results.

And this continuity is the reason why we can now go public for the first time in many years. *We want to give you all a sign of hope: the Phenomenon is still there.*

Of course, you will now ask what makes us so sure of this? Well, as we stated above, the crop circles in England are the beginning and are an invitation to communication. So in the summer of 1991 we started to communicate using a single formation, made with the farmer's permission in a remote field. We used "their" proposal for communication as "they" had shown us in the fields for so many years. And this proposal is: pure astronomy. The simplest thing that everyone on Earth can see: stars and planets. They are easy to discover in the night sky like sparkling diamonds against the black depths of this stellar neighbourhood -- our galaxy.

It was never our main intention to only find how the circles are created. At the moment this is not important. From the UFO phenomenon we already know that an unknown technology is used. It is far more advanced than what we have today, so from the start we had no illusions that we would find out how the stems were bent to form such beautiful patterns. That is why some investigators have had so few results in the past.

The focus of our efforts was to grasp the appearance of formations, which is -- beside an open heart and a sincere mind-- the only way to get closer to the phenomenon. Amazingly, with this concept, we had success from the beginning in July 1991. At that time we put our first question --and got answers within three days. You all know the Temple Farm (Preshute Down) pictogram of July 16/17th 1991 and its two somewhat shorter repetitions at Alton Priors and East Kennet. These both appeared when we were on our way and then back home --and, of course, the Barbury Castle pictogram of July 17th 1991.

We want to stay quiet and remain at peace with everyone, but we also want to continue our work. What we want to reveal at this time is this: for many thousands of years, the shape of the Barbury Castle pictogram was in the sky above by day in summer and by night in winter. Look at any star map to see what we call in Germany the "Winter Hexagon" -- the constellations and stars of (1) Canis Major, including Sirius (2) Canis Minor, including

Procyon (3) Gemini, including Pollux (4) Auriga, including Capella (5) Taurus, including Aldebaran, and (6) Orion, including Rigel (without Betelgeuse). Then, on one of those clear and cold winter nights, go out to Adam's Grave, Windmill Hill or anywhere, stand beneath the starry sky, take some time (forgetting all your sophisticated hi-tech equipment) and fulfil one of the messages of the circle phenomenon: just look and think. And, if Sirius is above the horizon, then you will see this great alignment of stars that was so important for all mankind everywhere on this planet for thousands of years. There you can see one of the reasons why people in the distant past moved those huge stones around and built up pyramids, like the one in your vicinity -- Silbury Hill.

The crop circles are for *everyone --no matter who he or she is*. These symbols in the fields produced very special responses in those who saw them, whether first hand in the fields or in photographs. In the end even hoaxing had some good effect, since we all by ourselves are proof that there is a genuine crop circle phenomenon if we stay steadfast together --and communicate.

JOACHIM KOCH & HANS-JÜRGEN  
KYBORG  
Stadtrandstr. 550g, 13589 Berlin, Germany

*I think that we shall have to persuade Joachim and Hans-Jürgen to tell us more about their communication experiments in Wiltshire in a future issue --Ed.*

## Soldier on !

From Mr Donald Kelly

I recently received "Number Ten" of your interesting journal. I congratulate you on a fine publication. It is good to know that an intelligent and capable person is taking over from Mr Michell.

Some time ago I wrote a letter to the editor requesting that less attention be directed towards the hoaxers. Unfortunately, even from thousands of miles away I can see that it is not possible to keep clear of them.

Somewhere in the archives you may find an *I CHING* reading I sent a couple of years ago. I remember one hexagram was #7, "The Army". Brian Browne Walker in his edition of the classic interprets the "judgment": In times of war it is desirable to be lead by a cautious and humane general. Thomas Cleary in *THE TAOIST I CHING* has for the first (yin) line: The army is to go forth in an orderly manner; otherwise even good turns out bad.

Soldier on !

DONALD KELLY  
9257 S. Pulaski Road, #10, Evergreen  
Park, IL 60642, U.S.A.

## Goodbye New Swirled Order

From Mr Michael Glickman

It is only now, having resigned from *The Cerealogist* and having ended "New Swirled Order" that I understand just how important the column has been to me and how much fun it was.

Readers have given me much support over the last few years and it would be churlish for me to leave without a justification, and, perhaps an apology.

*The Cerealogist* has a tradition of curiosity and openness; it delighted in the Crop Circles. It was more interested in opinions than in explanations. It sensed, in my view correctly, that explanationism was a dead end. Every kind of view—at one time or another—found a place in its pages. I relished this spirit of wonder.

When George took over as editor, I offered him my total support on the sole condition that the magazine was not turned into a hoax paranoia journal.

His unilateral decision to use the columns of *The Cerealogist* to denounce the Bythorn Mandala as a hoax (without ever having visited it and on the flimsiest of evidence) seemed to me a betrayal of our readership.

In the last two years we have been forced—ad nauseam—to consider Doug & Dave, MBF, M15 involvement, the Victorian tapes, Jim Schnabel, Opus Dei, Robert Irving, CIA involvement and more. And now, a new, and equally hollow threat, Julian Richardson, alias "Bill Bailey", casts its shadow over the magazine's future. The damage that has been generated by this is immeasurable. The enlightenment is negligible. Enough now, George.

I could not face further pollution of this magical subject by yet another deeply boring and ultimately meaningless obsession.

Thank you for reading the column. I hope there was as much pleasure in the reading as there was for me in the writing!

MICHAEL GLICKMAN  
80 Lambie Street, London NW6 7NX

*It is sad that we have lost "New Swirled Order" despite my having asked Michael to reconsider. If he cares to leaf through this issue he will find "every kind of view" is still expressed in these pages and a disagreement over the authenticity of a particular formation in no way changes editorial policy. As for what he says about the so-called Mandala, turn to "Bythorn Bedlam" in the Editorial Notes (p. 2)—Ed.*

## Economical with the truth

From Mr Jürgen Krönig

Two years ago I remarked that the circles had lost their innocence, if an age of

innocence ever had existed. But now things have become much worse.

Blind believers and revenge seeking fundamentalist sceptics—I am not referring to the comparatively genteel Wessex Sceptics—both demonstrate a regrettable tendency to be highly economical with the truth. A recent article by Michael Glickman (*The Circular*, Vol 4 No 3) is an excellent example. Firstly, in my lecture at the Dorchester Conference I did not once refer to "hoaxers" but used the more appropriate term "circlemakers" (to whom any circles connoisseur should be grateful). Nor did I ever mention the name Irving whose indulgent, attention seeking character should not be flattered.

One telephone call to John Wakefield would have been enough to confirm that he was indeed shown a plan of the "Nautilus" design before Irving went out to make his "Snail & Trail" formation near Waden Hill on July 11 (and four weeks later the pictogram at Cherhill). This was something John's friends were unaware of. Instead Glickman prefers to spread misinformation.

I find it amusing that he falls head over heels for the denial of Wessex Sceptic Robin Allen as regards the so-called 666 formation, but, sadly, in his desperate attempt to ignore unpleasant facts, he would even ally himself with a crop circle devil—mowing or otherwise!

"Lunacy"—to use a word Glickman directs at me—can be excused, but it is less easy to forgive distortion of the truth. Michael Glickman should stop behaving like a member of the Inquisition, try to calm down, and accept some uncomfortable realities. But I hardly think that he will. One can only hope, in 1994, for an end to the spite and malice that has seized both sides of the crop circle debate.

JÜRGEN KRÖNIG

Old School Cottage, Calstone, Calne,  
Wilts SN11 8PW

## Prehistoric pranksters ?

From Mr David Warfield

The recent theories concerning hoaxes could throw a new light on the origin of many Wiltshire antiquities, i.e. why stop in the 1960s, and why stop at crop circles?

Could it be the White Horses are due to the activities of a mediaeval Doug & Dave pair who rode forth on Friday nights and executed these works? How better to keep the superstitious peasantry in order ?

Going further back in time to Stone Age pranksters, is it possible that a larger team of men and horses could have spent weekends transporting huge Welsh stones to their present sites, —or even raising Silbury Hill inch by inch ?

Their purpose —aided by a few invented

myths— was, obviously, to deceive over the centuries, successively, the Druids, the Romans, antiquarians, archaeologists, treasure hunters, authors, dowsers and, gullible coppers !

Your readers may of course wish to draw the line at the Wansdyke, but what we are seeing recently may only be the continuation of a long tradition.

DAVID WARFIELD

14 Glenwood Road, Henleaze, Bristol

## A changing circle centre

From Mr John Cross

On August 24th Shirley Gifford and I went to the Beckhampton area for a crop watch. Near East Kennett we noticed people in a field and decided to take a look. A new formation had appeared that morning and had attracted a number of investigators. Colette Dowell and Chad Deetken were taking measurements while Busty Taylor had just finished taking photographs. After taking a good look at the formation we went to "The Barge" and then on to Alton Barnes to crop watch.

After an uneventful night, during the early hours of which it poured, we set off for home. Later Shirley wanted to try some dowsing, so we went back to the formation. She and I made our way into it and she started to dowse. I saw what seemed like a shadow at the far end of the pictogram. I walked towards it and saw it was an addition to the formation—a large circle with a small section in the middle, about 12 in. across and bolt upright. I felt privileged to be the first to see this addition and shouted to Shirley. She came to look and then we then went off to find Colette.

On arriving back we saw one other person going into the pictogram. I told him that the addition had appeared overnight. He said he lived locally and had had a feeling that something had happened during the night.

The centre was still upright but a few stalks appeared to be bent over now. Either no one noticed or no one twigged at the time that this would eventually spin itself into a "cone". My thoughts were that it must be the wind. After a quick breakfast, Colette and her friends arrived, followed by a German group.

It was about 10 a.m. when the Germans were taking a video of the circle, pointing a camera at the centre, that Shirley noticed that this clump of crop had twisted round and was half laid flat. I stood next to the central section and said to someone, "Yes, it was this high earlier", indicating the height of crop with my hand. No one had seen it move but we all saw the end result.

JOHN CROSS

6 Combe Fields, Portishead, Bristol

# THE LIVING CIRCLES

Terry Wilson puts forward a fascinating explanation for genuine crop circles which he believes may be caused by the plants of the living crop itself.

THIS ARTICLE PROPOSES a new solution to the circles problem, but one which I believe has been staring us in the face all along. In the past the circles have been regarded as inanimate objects, similar in nature to UFOs, yet it is my contention that such a view serves only to obscure the true wonder of the phenomenon. The circles themselves, with the crop stems unbroken, are every bit as alive as you or me, and, as such, the theory detailed below may solve some of the more fundamental questions which the subject gives rise to. In outlining the theory the following assumptions are made:-

- i) There exists a 'genuine' phenomenon
- ii) The circles are the product of an intelligence
- iii) The phenomenon has purpose
- iv) The phenomenon is caused by the crop itself

Initially, the idea that the crop itself is the causative agent for intelligently designed formations may seem a little odd but let us look closer.

## Intelligent Organisms

Back in 1966, a U.S. lie detector expert named Clive Backster hooked a lie detector machine to a plant leaf, his intention being to water the plant and see how long it took for the electrical resistance of the leaf to change. To his surprise the leaf's response was immediate and the trace obtained on the machine closely resembled that obtained from a human when subject to a pleasant emotional stimulus.

Somewhat intrigued, Backster decided to burn the plant with a match to monitor its response. No sooner had the thought come into his mind than the machine tracing became wild and frantic as if the plant were panicking. Backster had neither touched the plant or even moved. After more exhaustive research and some soul searching, Backster was forced to conclude that:

- (a) plants exhibit all the qualities of emotion, and
- (b) plants are endowed with the ability to read the human mind !

This second conclusion is significant as regards crop circles and will be returned to shortly.

These findings were later confirmed by other scientists around the world. One

researcher, Pierre Paul Sauvin, succeeded in designing electronic equipment which could be operated by the chemical changes within the leaves, and thus was able to operate a remote controlled plane by thought, using the plant as a medium. This proved beyond doubt that Backster's findings were legitimate.

Much more research has been done since which has shown plants to have a rudimentary memory and an ability to learn. The book, *The Secret Life of Plants*<sup>1</sup>, by Tompkins and Bird, documents much of this.

## Plants and Movement

Certain experiments have shown that plants, including cereal crops, can orientate their growth according to various stimuli. Dorothy Rettalack demonstrated in 1969 that crops actually lean towards loudspeakers which broadcast pleasant music (it seems they prefer Indian classical music). Some plants will actually curl themselves around the speakers as they grow. A similar phenomenon can be witnessed in millions of gardens. Climbing plants are somehow able to "see" the nearest vertical support and will unerringly grow towards it, even if it is hidden from conventional view, e.g. by a screen. Move the support and the plant will change direction accordingly.

Furthermore plants are capable of movement - as is now generally accepted - (see Darwin, *The Power of Movement in Plants*<sup>2</sup>), yet with a few exceptions such as the Venus Fly Trap the movement is so slow as to go generally unnoticed.

It is also becoming accepted that plants actually communicate with one another, which is supported by recent findings. It is perhaps worth considering these two facts together - plants can move, and they are capable of communication.

## Cerealogical Anomalies

(1) Electrical flashes. These have been observed amongst the plants in the vicinity of the circles on occasion and have baffled contemporary researchers. However it



seems that the flashes are caused by the plants themselves rather than by any energy field associated with crop circles. Goethe reported seeing flashes between poppies nearly 200 years ago and the *Gardeners' Chronicle* in 1859 carried a report of flashing coming from Scarlet Verbenas observed as an electrical storm approached. It is likely that many more cases have been documented over the years; perhaps this should be looked into.

2) Radio-nuclides and element levels.

The presence of non-naturally occurring radio-nuclides and of abnormal proportions of elements in soil samples may be considered together. Certain research over the years has shown plants to be capable of transmuting elements in a manner completely unknown to orthodox science.

Examples include the discovery that the Tillandsia moss can convert copper into iron oxides, that cress can convert distilled water into sulphur, and that clover can generate magnesia, nitrogen and phosphoric acid from other substances (See *Biological Transmutations*<sup>3</sup> for many such accounts). Tompkins and Bird liken the process to the opening of a safe door which can be done either with a dynamite explosion or by learning the combination. We need to use powerful atom-smashers to transmute elements whereas plants seemingly know 'the combination'.

If such processes *do* occur, as some evidence suggests, then this would lend support to the theory that no external agent is necessary for circles manifestation.

3) UFOs. Andrew Collins' excellent book, *The Circlemakers*<sup>4</sup>, demonstrates good evidence that UFOs can be considered in many cases as orgone bioforms. If indeed orgone is the energy of life itself then the bioforms observed above affected cornfields may well have their origins in the organisms below. Perhaps orgone is discharged or attracted by the process of plant communication?

4) Links with the human mind. This



phenomenon is well established in circles lore (e.g. by "clustering", Busty Taylor's Celtic Cross, the 1992 CSETI experiment, etc.) and has been demonstrated by Backster with respect to plants (above).

## White Crow and the trilling

Events at the end of the "White Crow" project in 1989 are well documented (e.g. in *The Crop Circle Enigma*<sup>5</sup>). An experiment in communication, carried out by a group of leading circle researchers, was initiated by a channelled message. Whilst I do not wish to comment on the origins of the message, its content is of some interest here. The full "White Crow letter" included the following passages:-

Your sight is set for yards apart  
But crows fly high, now check your chart  
Where I be is ALL around, listen hard  
You'll hear my Sound.

One soul is there. They have signed in  
Who has the mind to link within....

The human mind is what you need  
To me you can't see wood for trees

Get this mind and sit around  
In quiet of dark upon the ground  
Listen hard for every sound  
Not white of bird? but us around..

So we have an invitation to initiate a mental communication with the circle-makers (their use of the plural), which is what seems subsequently to have happened. Assuming that the circle-makers are the plants themselves then the message begins to make a little more sense. So what are we to make of the trilling noise?

George Wingfield writes, in *The UFO Report 1991*<sup>6</sup>, :-

"I have little doubt... that it was caused by something living and intelligent" (p. 21)

"All three of us had the impression that the noise came from several unseen living

entities" (p. 23)

"The noise seemed to emanate now from long grass and bushes" (p. 23)

It is interesting to note that Wingfield describes the noise as coming from unseen entities. Referring back to the White Crow verse, the lines:

"Where I be is all around", and

"To me you can't see wood for trees" seem to make this point, if indeed the circles are made by the crops themselves.

White Crow is not the only time that the trilling noise has been heard. Colin Andrews first reported it in *Circular Evidence*<sup>7</sup>, when writing of its manifestation at Kimpton in 1987. Andrews made a *mental plea* for a clue and the noise manifested in response. At White Crow a similar mental link was made. Andrews likens the noise to electrostatic chattering.

If we accept that plants are responsive to human thought patterns, is it possible that the trilling is their communication to us? The following discovery may be of CRITICAL importance to the phenomenon as a whole :-

Dr. Ken Hashimoto, a Japanese scientist carried out a similar experiment to Backster, but rather than connect his plant (a cactus in this case) to a lie detector, he connected it to a tape recorder. Hashimoto then urged his wife to approach the cactus, whilst mentally assuring the plant of her love for it (i.e. to establish a mental link, as in the White Crow experiment where 'peaceful thoughts' were extended).

Tompkins and Bird describe the resultant sound, as recorded by Hashimoto, as :-

"Like the high pitched hum of very high voltage wires heard from a distance, except that it was more like a song, the rhythm and tone being varied and pleasant, at times even warm and almost jolly".

This was written in 1973 and is astounding in its similarity to a description of our own trilling noise. Compare the phrase,

"high pitched hum of very high voltage wires" to Andrews' "electrostatic chattering". This is surely more than coincidence (so much for the Grasshopper Warbler theory!), and, indeed, the circles trilling was recorded directly across electrical equipment at

Beckhampton in 1989 when Colin Andrews and Pat Delgado were making a recording in a circle.

## Further thoughts

If we accept the theory that the crops are making the circles, which seems reasonable, then, as yet, we can only speculate on the message. The obvious communication which springs to mind is that the plants are warning us of their own ill health. In administering artificial fertilisers and pesticides to the cropfields, we have entered into chemical warfare with nature itself (and, simultaneously, the circles have proliferated). This may have long term catastrophic effects, e.g. the disturbing of the balance of micro-organisms in the soil. One consequence of chemical spraying is that the fields are crossed with tractor tramlines. The pictograms frequently reference themselves to these tramlines.

Clearly the circles do not hold a language for us to decode. They simply say to us, "we exist, we are intelligent, explain us", and more importantly, "we are trying to communicate". Perhaps we ignore this at our peril? The Hopi Indians seem to know the answer to this question, maybe because their tribe lives at one with nature.

In conclusion then we can say that crops and, indeed, many plants, have an intelligence comparable to our own, but on a slightly different level. They are able to communicate with each other, and to interact with the human psyche. Plants are endowed with awareness and movement. Paranormal seeming events, such as electrical flashes and the trilling noise, may not be so paranormal after all!

If genuine crop circles *are* made by the crop, then there is one more body of evidence which we must not ignore - the eye witness testimonies. Witnesses report seeing the crop lay down seemingly of its own accord, without the aid of plasma vortices, hoaxers, UFOs, or, indeed, any external agency. This is confirmed by film obtained in 1990 at "Operation Blackbird". Thus we can conclude that the eye witness testimony supports the theory outlined above.

## References:

1. Tompkins, P. & Bird, C. : *The Secret Life of Plants*. (this book is essential reading for full understanding of the theory detailed above.)
2. Darwin, C. : *The Power of Movements in Plants*
3. Kervran, C.L. : *Biological Transmutations*
4. Collins, Andrew : *The Circlemakers*, (1992)
5. Noyes, Ralph (Editor) : *The Crop Circle Enigma*, Gateway Books (1990).
6. Good, Timothy (Ed) : *The UFO Report 1991*
7. Delgado, Pat & Andrews, Colin : *Circular Evidence*, Bloomsbury (1989).



GEORGE WINGFIELD

Colin Andrews examines barley in circles at Longwood Estate, 1988

## Editorial Notes: The stamp trick

Shortly after the Conference in Salisbury on August 22-23rd 1992, I managed to decode the Silbury Shamanic Mandala, or "Necklace" crop formation (writes *John Haddington*). It was my judgement then that this formation would be claimed by Jim Schnabel as he appeared to have a personal mission to rubbish the crop circle phenomenon. This became clear at the 1992 Conference from listening to his attack on the phenomenon in the auditorium, and also in conversation with him later. What Jim Schnabel's motives are in this respect, apart from selling his book, is still unclear, although one has one's suspicions. At this stage there was no suggestion that Jim Schnabel had anything to do with the creation of this formation, and I do not think that he made any direct claim for it until the publication of his book, and his talk to the Essex branch of the CCCS.

As this formation was evidently the archetype of 1992, it is vital that it should not be perceived as a hoax by the more gullible of the followers of Cerealogy, otherwise they will altogether miss the point of what is happening. The same problem seems to be occurring this year with the Bythorn Mandala, but I must not digress from the matter in hand.

In order to tease Jim somewhat, I thought up a device that I would send him through the post as a sort of enigmatic message which he could interpret as he chose, but I intended to provoke him into using it himself in some way. I was fairly sure that this ploy would be successful, as I had spoken at some length to him at the Conference, and saw that he was the sort of person who would use everyone and every situation at hand for his own purposes. Again I was right, for he has used just that very device which I sent him in order to make a claim that he "registered" the idea of the Necklace formation before he supposedly hoaxed the crop circle.

The postcard that I sent him was in the form of a packet of wildflower seeds on which I had altered some of the lettering to look like pictograms, zodiacal signs, etc., on a line that led along towards the stamp. Beneath the stamp I had placed a miniature photocopy of John Martineau's drawing of the Necklace formation. The stamp would have looked "lumpy" and so, if he spotted the pictograms/zodiacal signs, he would have been intrigued by its lumpiness, and would have looked underneath to see what was there. There was no indication whatever that it had been sent by me.

Obviously he thought that this was a good idea to copy, but because he received this postcard AFTER the appearance of the

Silbury Hill Necklace on August 17/18, he could not mail his alleged "registered design" correctly to any uninvolved third party for them to be witness that he must have created it. He was left with only one option which was to mail a design to himself, using an envelope postmarked prior to August 17, and try and bluff his way out of this jam.

Such a method of registration is, naturally, completely unacceptable as 'evidence'. Now Schnabel has heard where the packet of seeds and envelope originated from, he has sent an embarrassed and babbling letter to Monty Keen which only serves to cast even more doubt on his dubious claim.

Let us suppose that Jim Schnabel did have the idea before August to create the Necklace formation and decided to register his design by the stamp method which he allegedly chose. Then I must have read Jim's mind and :-

(a) Picked him from a very large number of potential hoaxers as the one man who would actually claim to have created the formation,

(b) Identified the exact form which his claim would take,

(c) Followed through with my plan with the confidence that in both cases I would be correct.

Which story is the more believable? Jim copied my idea, or I read his mind? I have never knowingly done such a thing before. Hoaxers are by their very nature deceivers and anything they say should be treated with enormous suspicion.

The phenomenon lives and the Silbury Hill Shamanic Mandala was the archetype for 1992. The bottom line for disbelief in Jim's claim is that he did not mail the design to a third party BEFORE the event because he only got the idea for such a process AFTER the formation had appeared. Michael Glickman's review in the *The Guardian*, stating that Jim Schnabel had not been truthful, got a response from Jim demanding "a full and prominent retraction" by *The Guardian*, and threatening legal action if they did not accede to his demands. *The Guardian* did nothing. Neither did Jim Schnabel !! I hope that this makes things a bit clearer.

Schlüssel [G.]. Clef.

Schnabel [G.]. The mouthpiece of the clarinet and recorder; see Mouthpiece (b), (d).

Schnabelflöte [G.]. Old name for \*recorder.

Schnadahupfl [G.]. A Bavarian-Austrian folk-song, frequently with improvised humorous texts between an iterated refrain. See K. Rotter,

So that's what it means !

This excerpt from the *Harvard Dictionary of Music* may cast some unexpected light on the meaning of a certain surname.

## How others see us

*George Wingfield* writes : If one bothered to refute in detail the torrent of invective, threats of legal action, and other nonsense published by Paul Fuller in his journal *Muckspreader*, it would take up much valuable space in this magazine which could be put to better use. With regularity he reports that either my house is for sale or that I have emigrated to the U.S. Neither is true and this can only be put down to wishful thinking on Fuller's part. Since the demise of Terence Meaden's highly questionable Plasma Vortex theory, which was so dogmatically and aggressively promoted in his journal, the sour-faced Fuller has concentrated much of his fury on myself and Colin Andrews. If one is a hate figure for someone like this, it confirms one must be doing something right !

In a recent issue he repeats the wonderful story that back in 1991 I had drunkenly fallen off Shirley Maclaine's yacht into the Pacific Ocean. Alas, this is a complete fiction which first appeared (like so much other fiction) in Jim Schnabel's book *Round in Circles*. Presumably it was concocted in order to discredit me and was gleefully seized on by Fuller. Much as I like this image of me hobnobbing with Hollywood stars and quaffing champagne on their luxury yachts, I fear that there is not the slightest shred of truth in it. My lifestyle is, regrettably, far more mundane! Although I have met Ms Maclaine on two occasions I very much doubt whether she even has a luxury yacht on which the two of us could go cruising in the Pacific !

Truth, it seems, is the least consideration for those who continually seek to discredit others. It is sometimes suggested that libel actions should be brought against the purveyors of this sort of rubbish, but I doubt if that would be sensible in a day and age in which one finds there are some "newspapers" which literally make up

# \$ 1,000 PRIZE

**Dr Alexander Imich Prize Contest No. 6**  
**Sponsored by the Center for Frontier Sciences at**  
**The Temple University -- Dr Beverly Rubik, Director**

**Dr Alexander Imich announces his call for papers and contest No. 6. A \$1,000 prize will be awarded for the best original paper on the topic : -**  
**Are all Crop Circles Merely Hoaxes ?**

**Any author may submit a paper for consideration. The winning entry will be published in the Center's periodical FRONTIER PERSPECTIVES. All other entries will remain the property of their authors who will be free to publish them upon completion of the contest. The deadline for submission is June 30th, 1994.**

**Papers should be written in English and be double-spaced on one side of a sheet of 8 1/2 " x 11 " (or A4) paper with minimum one inch margins on all sides. Three copies of each entry should be sent to :**

**W.P. La Parl, Contest Coordinator, 19 Wood Street,  
Hopkinton MA 01748-1132, United States of America.**

their "news", presenting fiction as fact. Maybe authors of some small circulation magazines (and books) are following suit?

Be that as it may, in accordance with the established principles of *The Cerealogist*, we give credit where it's due and present Brian Grist's eminently fair and unbiased review of Fuller & Randles' revised book, *Crop Circles - A Mystery Solved* (see p.17).

## Stop press

Another broadside against cerealogy by the debunkers will be the publication soon of crop circle "expert" John Macnish's book *Cropcircle Apocalypse*, in which he claims that all crop circles are manmade and that the subject is no more than a myth. This is just the opinion of one man and it is best seen in the context of Macnish's activities over the last two summers: he has filmed lengthy footage of various hoaxers such as D & D, Schnabel and Irving making circles by day and by night in Hampshire and Wiltshire. Apart from the previously described Hyden Hill (East Meon) fake, none was done with the farmer's permission, so far as we know, and this would appear to make him an accomplice in acts of criminal damage. Circlefaking is undoubtedly addictive and the more circles one sees being faked, the more sceptical, if not cynical, most people become (see "The Best Intentions" (page 20)).

Undoubtedly many 1992 and 1993 crop circles in England were manmade fakes (most, perhaps, sponsored by Macnish or his friends) but this does not alter the substantial body of evidence (including a few eye-witness reports) that some circles form without any human agency.

The cover picture of *Apocalypse* is one of Mike Inns' photos of Julian Richardson's highly elaborate Cranford St Andrew formation (July 31/ Aug 1, 1992). This cover was produced amid much secrecy - and caused Inns' amazement, since he had given Macnish these photos just for use in the *Communiqué II* video documentary! The photos of the Cranford formation are in fact old hat, since I presented these eighteen months ago at the Salisbury Conference saying it was the work of "Bill Bailey" (Julian Richardson). Since Mike Inns and I hired a plane together to photograph Cranford on that Aug 1st (having been told in advance by Julian that he was making it) his photos and mine are virtually identical.

In a recent article on circle hoaxing in *Fortean Times*, Jim Schnabel tries to imply that I was taken in by the Cranford formation and had called it "impressive". I did call it impressive, at the 1992 Conference, but I made it quite plain at the time that I knew it was a fake and who had made it. Once again, here was a grotesque attempt to distort the truth about what I'd said. Our Jim also claims in the same article that I had christened him "The Snake" because of his ability to enter and leave a cornfield without a trace. This is not true either, and he must know the appellation "Snake" was given him for much more obvious reasons!

## Advertising in the Cerealogist?

Advertising rates are available on request from :-

*The Cerealogist*  
Hearne House  
North Wootton  
Shepton Mallet  
Somerset  
BA4 4HW

Tel or Fax :  
0749 - 890257

## COLLECTOR'S SLIP CASE

PRESERVE YOUR COPIES OF THE MAGAZINE AS A COMPLETE AND ON-GOING ARCHIVE OF THE CROP CIRCLE PHENOMENON.

To obtain easy access to the only complete, season-by-season record of the crop circle phenomenon in all its aspects, it is best to preserve your copies of *The Cerealogist* in the special collector's clip case. This useful item is bound in plum-coloured material with gold lettering on the spine, and looks good on the library shelf. You can order it from *The Cerealogist*, 20 Paul Street, Frome, Somerset BA11 1DX, sending £8.90 or \$19. For c.c.



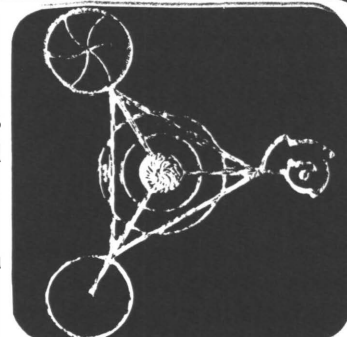
orders call 0373 451777 or see subscription form inside.

## Symbols in the corn

Handcrafted sterling silver jewellery. Inspired by the crop circles. All designs available as ear-rings, pendants and brooches. New designs now available.

**Millside Forge**  
P.O. Box 1059 Sturminster Newton  
Dorset DT10 1YA

Phone / Fax : 0747 838824  
TRADE ENQUIRIES WELCOME



GOLDEN TRIPOD

## GLASTONBURY SYMPOSIUM

# INVESTIGATING CROP CIRCLES

*The event will be happening  
as usual at:*

THE ASSEMBLY ROOMS  
on the  
5th, 6th & 7th of AUGUST '94

*The full programme will be posted  
in coming issues of  
The Circular & Cerealogist*

Contact: **Roland Pargeter**  
91 Roman Way, Glastonbury, BA6 8AD  
Tel. : 0458 834252 or  
Tel. & Fax 0458 832 533



## Two-Thirds

David P Myers Appendix David S Percy

The full story behind the civilisation of Altea  
How Altea is directly connected with the complex that  
includes the Sphinx on our neighbour the Red Planet  
The reason why Avebury is a small scale model of that complex  
The reason why Avebury, Glastonbury and Stonehenge  
comprise the large scale model of that complex  
The full story of the *laying down* and *activation* of our  
transtime crop glyphs

The reason why the most significant crop glyphs  
(containing information on new technologies) were laid  
down and activated in those areas

*Two-Thirds* demonstrates that an advanced means of  
energy production---through technology that functions in  
*harmony* with the hyperdimensional parts of the Universe  
can produce almost unlimited amounts of energy  
This *consciousness energy production* is so efficient that  
it will only take a few beings to 'generate' enough energy  
to run an entire continent

"Utterly astonishing" (MICHAEL GLICKMAN)

Order from your bookseller

in case of difficulty order from

Aulis Publishers 25 Belsize Park London NW3 4DU UK  
Paperback £16.99 plus £2.95 P & P



## Gateway Books

Publishers of one of the most  
talked-about books of recent times

### The Only Planet of Choice

*Essential Briefings from Deep Space.*

The Council of Nine, Phyllis Schlemmer & Palden Jenkins. £9.95  
*By wide consensus, required reading for the 1990s.  
A cosmic view of world history - present and future.*

*Now discover the latest crop, including:*

### A Search for the Historical Jesus

*From Apocryphal, Buddhist, Islamic and Sanskrit sources.*

Prof. Fida Hassnain, Director of Antiquities, Kashmir. £7.95

*Richly-researched evidence of Jesus's survival of the  
Crucifixion and Essene-backed later ministry in the East.*

### Heal the World

David Icke. £4.95.

*Latest book from popular new visionary on how to work  
together to make the world better.*

### Power of Place

*Sacred Ground in Natural and Human Environments.*

ed. James A. Swan. £9.95.

*A symposium on special places - Stonehenge - the  
Himalayas - Ayers Rock - and their profound effect on  
human beings.*

### Avoiding Social and Ecological Disaster

*The politics of transformation.*

Dr Rudolf Bahro. £9.95.

*Brilliant analysis of revolutionary changes needed to  
counteract failure of consumption economics.*

*And coming shortly - for cerealogists and UFO buffs:*

### Cosmic Connections

*Worldwide crop-formations and ET contacts.*

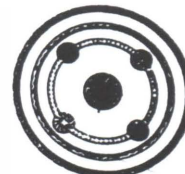
Michael Hesemann. £9.95.

*This is a revision of a very up-to-date German  
publication of 1993. Due out in July.*

*Pick up the phone and ask for a catalogue now!*

Gateway Books, Wellow, Bath BA2 8QJ.

Tel : 0225 - 835127, fax : 0225 - 840012



## JUPITER POWERWEAR CROP 'CIRCLE' T-SHIRTS & SWEATSHIRTS

The beautiful crop 'circle' designs silk screened on 100%  
cotton T-shirts, long and short sleeve, and fleecy-lined sweatshirts.

For coloured leaflet write to :- Judy Young, Lazy Moon Farm,  
Upper Brailes, Banbury, Oxon. OX15 5BA. Tel: 0865-685360