

An aerial photograph of a field with numerous crop circles of various sizes and patterns. The circles are arranged in a somewhat diagonal line across the field. In the top left corner, there is a large, stylized logo consisting of the letters 'S' and 'C' intertwined. The 'S' is on the left and the 'C' is on the right, both with a thick outline and a shaded interior. The background of the entire cover is a dark, textured aerial view of the crop circles.

SC

*THE MONTHLY
JOURNAL OF
CROP CIRCLES
AND BEYOND*

55

AUGUST 1996

£1.00

**1996's Events
Listed In Detail**

Geometrical Clues...

"When you are kicked and criticised, remember that it is often done because it gives the kicker a feeling of importance. It often means that you are accomplishing something and are worthy of attention" DALE CARNEGIE

The crop circles in 1996 continue to surprise and amaze, so we make no apology that the majority of this issue is almost entirely devoted to listing and reporting all the many events there have been across the country in words and photographs. Let's enjoy this marvellous phenomenon while we have it.

Apologies that this issue is rather late in coming. This was because the entire SC team absconded to Glastonbury at the end of July for the annual Crop Circle Symposium, hence the delay! Congratulations must go to Roland and Clare Pargeter for organising another fantastic weekend which brought joy to so many. A review will follow shortly.

A number of people have asked us if we will be responding to the recent issue of *The Circular* in which Barry Reynolds, myself and SC in general are implicated in having organised some sort of coup d'etat against the outgoing Council of the Centre for Crop Circle Studies (this anti-vibe even extends, inexplicably, to heavily criticising my now two-year-old video *Circular Sussex*). The answer is, no. The claims are so outlandish that we'll leave SC readers to decide for themselves whether or not anything we have ever printed justifies these allegations. Our back issues stand as a testament to the truth of the matter. The only thing that does need correction is to say that SC, not CCCS, paid for the Review Body surveys that our readers received earlier this year, as our accounts will testify. Beyond that, all we'd like to do is once again quote Dale Carnegie: "No one ever kicks a dead dog" and wish the old *Circular* team well as they take over the running of *The Cerealogist*.

Onto other things, with the Alton Barnes 'DNA' and the arrival of our cover star at Stonehenge, the media has suddenly picked up on the circles phenomenon again in a big way, with heavy press and television coverage. Even *Nature* magazine, extremely anti-paranormal by tradition, recently featured a photo of the DNA formation!

Lastly, a message to our Sussex-based readers. Panic not! After a very late start, at last the circle-making forces have returned to SC's part of the world (see list). Just when we were thinking we had the year off.

ANDY THOMAS

SC

THE MONTHLY
JOURNAL OF
CROP CIRCLES
AND BEYOND

Editor: ANDY THOMAS

14 Bishops Drive
Lewes
East Sussex
BN7 1HA
England
Tel: 01273 474711

SC E-Mail Address:
101476.1452@compuserve.com

SC: Edited and produced by ANDY THOMAS with assistance from Barry Reynolds and Kaye Thomas. Articles, letters and contributions to the editorial address please.

The opinions expressed in this publication are those of the individual contributors and not SC as a whole, unless otherwise stated.

SC Copyright (C) 1996: permission must be sought for any reproduction of material. Copyright for individual articles and illustrations lies with the original authors, artists and photographers.

SUBSCRIPTIONS:

£10.00 (UK)

£13.00 (Europe)

£18.00 (US and Overseas)

Cheques payable to 'SCR' please.

Cheques & POs must be made out in sterling (ie. English currency), drawn on a bank with a British branch. Eurocheques accepted. Cash accepted but sent at own risk.

SUBSCRIPTIONS AND MAILING ADDRESS:

Di Knibbs & Jason Porthouse
36 Graham Crescent
Mile Oak
Portslade
East Sussex
BN41 2YB
Tel: 01273 885117

Front Cover: Stonehenge, Wiltshire, July 1996. Photograph by Steve Alexander.

After a very late start, the fields of England are now bursting with formations of ingenuity and imagination. Listed here are the latest known about as SC went to print. More reports are coming in every day. As mentioned last month, these details are as accurate as possible, given that some of this information is word of mouth, and liable to change. What is printed is the info available at the time of writing. Incidentally, nearly all of our information comes from personal contacts and sources, not the Internet (which, despite its sterling efforts, is itself prone to errors). Only if no other information is available, do we cross-reference the Internet. Don't forget, if you have information about a new formation you think we may not know about, contact us at the editorial 'phone number.

A couple of amendments to last month then: Geoff Ambler has written to inform us that the single circle at Denton, Oxfordshire, is not visible from the A496 road, which apparently runs somewhere round the back of Snowdonia in Wales. Apologies to anyone who wound up on a Welsh skiing holiday instead of seeing a crop circle.

Meanwhile, we didn't do full justice to the formation at Goodworth Clatford (or Upper Clatford as some have it), which was in fact a quite beautiful and intricate 'rose' design of amazing and subtle complexity. A photo appears this issue.

Here then are the latest formations in England, in county and place name alphabetical order for convenience, followed by a list of US and German formations from this year. The rundown does not include 1996 formations already listed in previous issues.

BERKSHIRE

Ruscombe: A crop pattern appeared here on 25th June, and another maybe on the 27th, if it isn't the same one mistakenly reported twice. No details available.

CAMBRIDGESHIRE

Cambridge: Rumours of a new formation in this area as we go to print. No details available.

Perton, Nr Peterborough: Around 29th July, two circles, linked with a curved path, looking rather like handcuffs (!) arrived here.

Sutton: A large circle appeared here, not far from Wentworth, in mid July.

CORNWALL

St Austell: Cornwall's first formation for a couple of years appeared on 6th July, a T-shape with circles at each end of the bars, one of them ringed.

DEVON

Brixham: A ringed circle, a double ring and a ring with three petals inside were discovered on 15th July. Reportedly rough-looking.

ESSEX

Littlebury Green, Nr Saffron Walden: An astonishing mandala of rings and circles, with three standing crescents (fruit slices rather than moons) at the centre appeared on 12 July in wheat, near Junction 9 of the M11. Very clear-cut and striking. One team which entered the formation had problems with cameras, both electronic and mechanical, jamming while inside.

HAMPSHIRE

Andover: A formation appeared here around 8th July. No details available.

Clarken Green, East Oakley: Three overlapping rings/circles, giving the impression of petals, were found in barley, reminiscent of last year's Chilbolton formation. The lay is very fluffy-looking.

East Oakley: A sun symbol (or a flower in a pot) in wheat; a circle with many short emanating rays from which a straight pathway runs, crossed by three other paths and leading to what looks like two symmetrical Egyptian hieroglyphics either side of the path. Slightly crude in its execution, like native art, yet somehow attractive. Appeared 6th July.

Farringdon, Nr Alton: A 'wiggly' pattern was discovered on the Alton to Farringdon road, near a

- NEWS - CIRCLES '96 UPDATE #3

All of a sudden, after a slow start, the fields are alive with formations across the country. ANDY THOMAS rounds up all the information currently available from sources across England and beyond...

pub called *The Lawn*, towards the end of July.

Hannington, Nr Kingsclere: A very nice quintuplet where each satellite circle touches the inner circle, with the whole design ringed, appeared in wheat the first week of July. A good view can be had from the A339 road.

Longparish: What looks like a small strange figure made up from a circle with a standing crescent, a triangle, boxes and grapeshot was spotted on 7th July in barley. Nearby is another petite formation, a circle with a pathway, crossed by two other paths, one long, one short

Olivers Battery, Winchester: On the A3090 road, near a housing estate, a circle was found in barley at the end of July, from which emanates an arrow-head shape.

Ropley Dean: Around 30th June a 200' double ringed circle, slightly skew-whiff, arrived in barley, not far from 1995's Bishops Sutton asteroids.

West Tisted: A 'flower' formation in wheat of rings and circles arrived here mid-July, near Ropley. Similar in look to the Somerset formation at Martock but thinner and more unruly.

HERTFORDSHIRE

Kings Langley: A line of seven circles appeared here in early July which seems to point towards a nearby transmitter tower. Four of the circles arrived first, the remaining three being added later. There are also two 23' circles further up the field. The same location had three very similar lines of circles in 1995.

Lily, Nr Luton: A quintuplet was discovered on 7th July between Luton and Hitchin, near the A505 road. Each circle is 20' approx. The lower circle apparently made video equipment buzz, whereas the others didn't! The same field has had formations for the last two years.

KENT

Sevington, Nr Ashford: A single circle of 30' approx appeared in the corner of a wheat field around the 17th July, near Junction 10 of the M20.

LEICESTERSHIRE

Blaby: An 80' circle with a 216' ring and nine petals, reported in July. The very first instance of nine regular features being employed in a crop formation.

Cathorpe: On the junction of the M6 and M11 roads, three circles, two of them joined by a curved path, were reported in July.

Great Glen: South of Leicester on the A6 road, three circles joined with paths appeared in wheat on 22nd July.

Lutterworth: A single circle, between 60-80', was reported in July.

Oadby, Nr Leicester: A ringed circle, linked in some unknown way with a triangle-shape, appeared on 29th July, close to the A50 road.

OXFORDSHIRE

Burford: A 97' circle with "two extrusions" was spotted in barley on 3rd July.

Garsington: Not Gassington, as we had it last month. In addition to the very long 1068 footer and the nearby Denton circle reported then, there are now another three formations. One is a double-ringed 85' circle in barley with two grapeshot of 18' and 14'. It was first seen 22nd June but probably appeared two weeks before that by its condition. On June 25th, a single 50' circle in barley arrived behind a cricket pitch. Lastly, a 'thought bubble' design, reminiscent of 1994, was found on July 4th. Made up from seven circles of 64', 55', 32', 27', 20', 14' and 10', the large circle was ringed, with "antenna protrusion".

Shiplake: Yet another quintuplet (mid-80's designs are clearly back in vogue!), this time with the central circle ringed, although the ring is a bit 'wonky'. The centre circle is 39'3" diameter and the formation overall is 155'6". First reported 3rd July in wheat.

SOMERSET

Martock, Nr Yeovil: A beautiful formation in wheat overlooks the A303 road here very visibly and appeared on 17th July. 225' across, its configuration is a ringed circle with four petals made of further rings at the points of cross pathways which emanate from the central circle. Local television featured the formation prominently. A group of local Christians apparently "prayed" for a crucifix formation recently and were rather pleased to get the cross shape in this one!

SHROPSHIRE

Bayston Hill, Shrewsbury: In the first week of

June, a 'dragon's footprint' of 21' by 13' appeared in barley in the same field where a similar formation was found in 1995. This foot-and-claw shape was less pronounced than its predecessor. On the northern side of Bayston Hill, near the junction of the A49 and the A5, two further circles of 15' approx appeared in wheat early July, followed the next night by another four, randomly scattered across a field.

Muckley: West of the A458 road, a 40' by 25' eye-shaped oval with pointed ends appeared in barley in the last week of June.

SURREY

Silent Pool: This aptly named village, near Box Hill, site of circles in the past, has a natural spring pond, which is supposed to be haunted by the ghost of someone who drowned there. A formation, a ringed circle in wheat, with the gap between split into five sections by five thin pathways, was first reported in the fields above the pool on July 22nd. Silent Pool is on the A25 road, going towards Guildford.

SUSSEX

Beacon Hill, Ovingdean, East Sussex: A year and two days on from its last events, Sussex's first proper formation of 1996 appeared on 27th July in wheat, directly to the left of St Dunstons home for the blind which overlooks the sea. A large well-laid circle of 80', two beautifully swirled satellites, both 16', lie below it (the field is on a steep slope) with a 4' heart-shaped grapeshot to the left. The lay is fairly complex and many bent nodes were found within and under the lay (ie. not phototropism). Some clumps of crop had seemingly been ripped out of the ground with soil still attached, but were swirled in with the crop nevertheless. Residents in houses near the field report seeing and hearing nothing the night the formation appeared. The main circle is quite visible from the road which turns into Ovingdean off the A259. Local press and radio reported the event with great excitement. A welcome return of the phenomenon to SC's home county.

Petworth, West Sussex: A line of strange squiggly heiroglyph-type lines in oats were spotted in early July, together with some large strange patches of 'lodging' that don't seem quite like wind damage. Located about a quarter of a mile south of Petworth, in a field next to the A285 road.

WARWICKSHIRE

Coventry: West of the Cauley Services on the M6, a 25' circle in grass has been discovered by the side of the road.

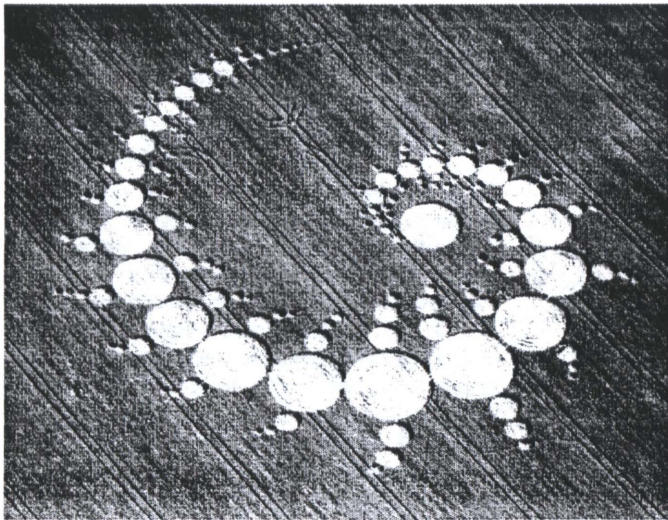
WILTSHIRE

Alton Barnes: In addition to the huge 'DNA' formation (see last issue) at East Field which was destroyed very quickly by sightseers, a little pictogram arrived in the same barley field, early July. Just across the road, below the white horse carving at Milk Hill, another pictogram arrived in wheat around the same time; a circle, with two 'insectogram' antennas, and a snaky body in two sections, leading to a rattlesnake-type tail of small circles. An odd squashed triangular ring lies nearby. One Canadian woman claimed these last circles appeared while she was standing within the pictogram, although she didn't see or hear anything. She found them as she went to leave the formation, where she believes there had been no circles before. Meanwhile, the two Germans Koch and Kyborg have constructed their annual 'response' formation to the circlemakers at Woodborough Hill (apparently with Tim Carson's permission). Two rings with early 90's-type 'keys' connected with a pathway, it's long and neat but, like their previous efforts, rather mechanical-looking.

East Kennett: Another sun-type symbol (see East Oakley, Hampshire), a circle with emanating wavy rays and a standing spiral inside with a crescent moon attached directly to the circle, suggesting a star about to be eclipsed. Found in wheat on 13th July, the floor pattern was extraordinary - nearly all of the laid crop was made up from two flows of wheat going in opposite directions. Occasionally, these contra-rotating flows would tussle up together, leaving little circular swirls within the general lay. In the same field as the 'dog bones' formations of 1995.

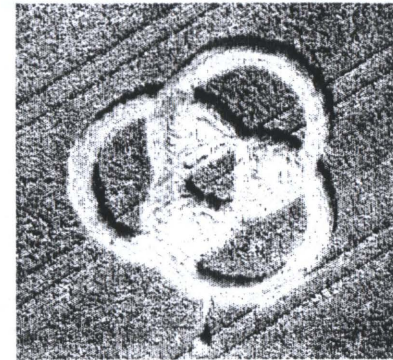
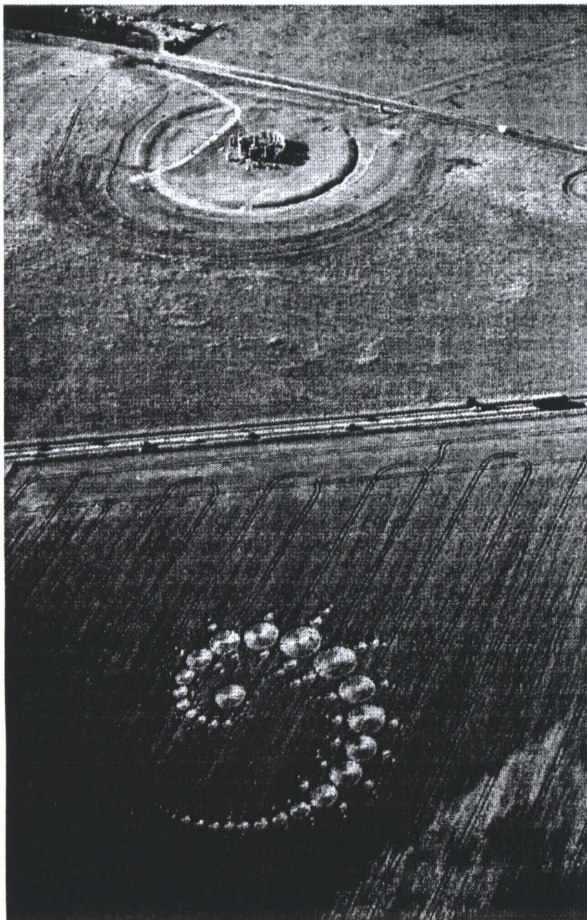
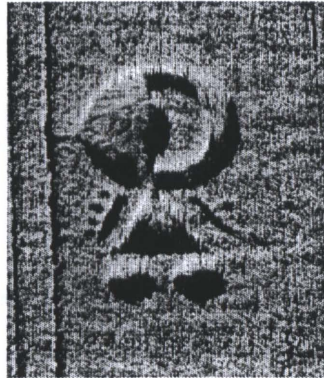
Etchilhampton: As we went to print, a massive formation, 4160' long (0.8 mile) - surely one of the longest ever - arrived here on July 29th, a linear 'necklace' design of 13 circular elements and wavy paths. Similar in conception to the Roundway line of circles, complete with a strange standing triangle in a separate circle, the lay of the crop is very good and visitors have been stunned by its sheer scale. This, 1996's longest pictogram, runs north-south in a wheat field at the foot of Etchilhampton Hill.

Froxfield: Formation spotted from a plane week of



LEFT: Stonehenge, Wiltshire

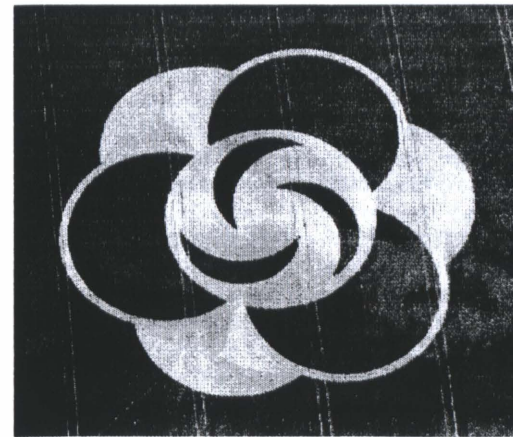
BELOW: Longparish, Hampshire



ABOVE TOP: Clarken Green, Hampshire.

ABOVE LOWER: Longparish, Hampshire

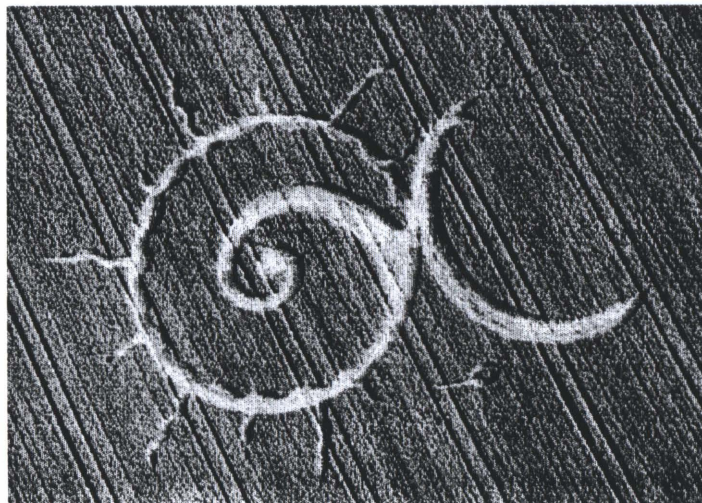
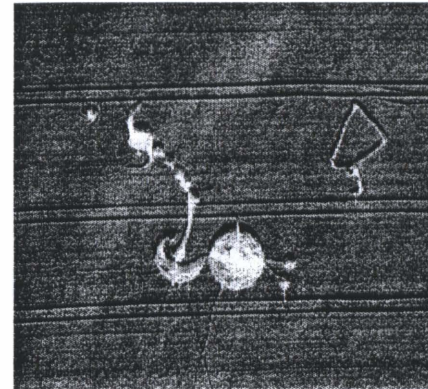
LEFT: The stones at Stonehenge with their new, if temporary, neighbour!



CIRCLES '96: PHOTO- SPREAD #2

Photographs from the 1996 crop circle season, taken by STEVE ALEXANDER

Original colour copies of these photographs and more can be obtained directly from Steve at £1.00 each. Sets from 1995 and 1994 are also available on request. Steve can be contacted at: 27 St Francis Road, Gosport, Hants, PO12 2UG. Tel: 01705 352867.



TOP: Littlebury Green, Essex.

MIDDLE LEFT: Milk Hill, Alton Barnes, Wiltshire.

MIDDLE RIGHT: Goodworth Clatford, Wiltshire.

LEFT: East Kennett, Wiltshire.

15th July. No details available.

Ludgershall: A figure-of-eight shape dumbbell in barley with a single circle nearby, is made more intriguing by the discovery of symmetrical 'Birling Gap'-type 'nests' of crop bent over halfway and woven together in specific areas of the formations. The usual was-it-birds-or-other-forces debates have, of course, begun. Over the other side of the A342 road, from which the dumbbell can just be seen, is a triangle formation. The farmer reports having had a small circle in the same area "thirty years ago".

Roundway, Nr Devizes: On 16th July, the first of two formations in this circle site of old was discovered; a simple dumbbell in wheat of the classic small circle/pathway/large circle design. Very neat, the lay of the crop is nicely layered and swirled. A few large blocks of natural chalk were found in the lay, where the stems had clearly flowed around them, instead of over them. A few days later, on the 22nd, three circles appeared in wheat nearby, in line with an existing tumuli, which seems to be intended as part of the design, with two of the circles either side. One of the end circles has a standing triangle inside, with a number of curious shapes cut out of it. From this circle is attached a small teardrop pattern.

Stonehenge: Possibly the most staggering formation of the year yet, beating even the DNA pictogram in complexity, this resembles a 'Julia Set', a mathematical diagram which results from running fractal equations on a computer, in a similar way to a Mandelbrot set. The spiral of the pattern uses the 'golden mean' and looks rather like a curled up centipede in wheat made up from many, many circles (151 - see photograph). The formation, 915' long (!) when unravelled, is directly next to the famous stone circle, just across the A303 road, although it can't be seen from the ground very satisfactorily. Most astonishingly, reports would seem to suggest that the formation appeared in daylight. According to Busty Taylor, a pilot flew across the field at 5.30pm on 7th July and it was empty. When he flew back over just before 6.00pm, he saw people in the field looking at the huge formation which had just appeared (although it's unlikely they realised this at the time). There are many variations on this anecdote and a little controversy, depending on who you listen to, but it seems pretty clear the formation did indeed appear within half an hour or so in the afternoon/early evening. Nobody present at the stones has yet

claimed to have seen or heard anything unusual at the time. Colin Andrews has reportedly interviewed some of the Stonehenge security guards, and appeared on *Meridian* television at the formation in a head to head confrontation with a rather unpleasant Farmers Union representative who refused to believe the formation was anything other than man-made vandalism. The Union's £1000 reward scheme for anyone caught making such formations was again launched... They've got a hope. After some cajoling, the farmer reluctantly agreed to open the field to the public (see *Comography* this issue for this and more Stonehenge controversy). Starting at £3.00, the entry fee has gradually lowered as the formation has got more worn... A sign has gone up on the adjoining A303 saying "See Europe's largest crop circle!". Queues of traffic apparently blocked the road for the first two weekends the field was opened - yet another sign of the public's enduring love-affair with the circles despite all the debunking nonsense put about.

Waden Hill, Nr Avebury: A well-formed pear-shape with a pointed end and two standing ovals give this formation, which appeared in wheat mid-July, the appearance of a 'Grey' alien face. Thus nobody has taken it seriously, despite the fact this is exactly the sort of formation which the more UFO-orientated researchers have been hoping for for years!

Windmill Hill, Yatesbury: A very impressive fractal spiral with three arms, in the Stonehenge style, arrived in wheat on 29th July as we went to print. Instant local television coverage followed.

West Overton: On 13th July, a haphazard but excellently formed design of boxes, circles and squiggles popped up in the corner of the wheat field where one turns off to West Kennett from the Alton Barnes road. Better from the ground than seen from the air, the farmer obviously thought there would be enough potential sightseers that would need deterring, and placed a 'keep out' sign at the edge of the field. This was soon removed by either the farmer or the sightseers, however.

WORCESTERSHIRE

Wythall, Nr Birmingham: Two 12' circles, 36' apart, one with a 'spurred tail' of 9' appeared in wheat, late July. A local lady circle investigator dreamt that circles would appear in this field shortly before they did! She has had similarly successful

premonitions before, apparently.

USA

Altuna, Iowa: Two 'ovoids' in dirt were reported on 20th June.

Bute, Nebraska: A 42' ringed circle appeared in barley.

Chehalis, Washington State: Not far from the pictogram of 1994, a 700' 'thought bubble' formation arrived in mid July. One of the most complex US formations yet, the main circle is in fact a deadringer for the English Froxfield flower formation of 1994 and the diminishing tail is made up of slightly wobbly rings. Reportedly impressive.

Chesapeake Bay, Maryland: More strange USA-type 'lodging' reported, which some believe is not created by the wind.

Colorado: On 17th June, two ringed circles and a single circle were reported after a night when aerial light phenomena were seen. More worryingly, a

mutilated steer was found in the vicinity, in classic cattle mutilation (sorry, 'bovine excision') mode, the second such case in the US - one similar circle connection was reported last year.

Columbia City, Indiana: A 200' pictogram, of a dumbbell, with one circle ringed, some strange US-type 'lodging' and a single circle.

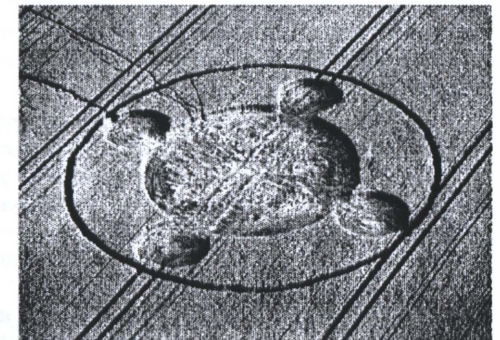
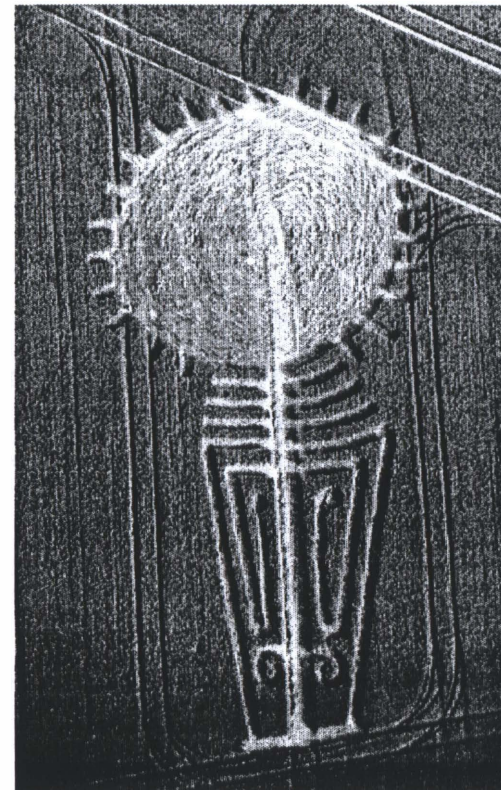
Paldean, Ohio: A 93' circle was discovered in a wheat field with no tractor tramlines.

Somewhere in the USA: Two 11' circles have been discovered etched into 'dirt', 7' deep. Exact location unavailable.

GERMANY

Schleswig/Kappeln: On 23rd May, three circles, two in barley and one in rape, on opposite sides of a road, were discovered.

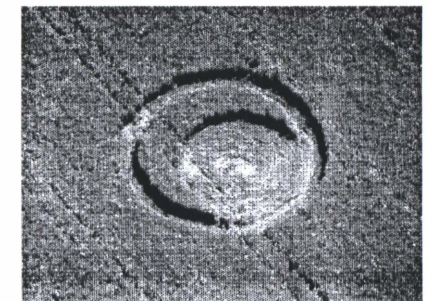
Thanks to all our regular contacts. Special thanks this issue to Michael Newark, James Nicholls, Tony Caldicott and especially Geoff Ambler for the Garsington info.



ABOVE: *Hannington, Kingsclere, Hampshire*

LEFT: *East Oakley, Hampshire*

BELOW: *A reminder of one of the previous East Oakley formations of this year!*



The Sussex research team have acquired something of a reputation over the last few years for their investigations into the communications aspects of the crop circle phenomenon. However, what must not be overlooked is the valuable evidence that has been gleaned, particularly from their survey work, regarding the physical mechanism involved in creating the formations. If we are to gain a true understanding of the phenomenon, then the formulation of a model of the process is an absolute necessity. This is the basis for comprehending the relative influence of the factors involved. Even though there may ultimately be an interactive intelligence involved, the mechanism for establishing the formations is very much a part of the existing laws of geophysics as we know it. The question is - how much of our current understanding is relevant and what do we need to investigate to provide us with a more comprehensive picture?

In this article, I shall attempt to show that a key geometrical feature identified in a Sussex formation provides us with a significant clue to establishing the universality of the crop circle mechanism in relation to other phenomena identifiable in our planetary system. We begin with the concept that virtually everything we perceive in our geophysical environment is due to circular motion. A cursory glance at the weather map shows the cyclonic nature of our weather patterns. More localised extremes of these are hurricanes and tornadoes. Beneath these macroscopic examples of vortical flow lay a more subtle 'scaffolding' of vortex flows which direct the form and structure of these sky/ground columns of energy. Whereas weather effects are tangible, other energy columns are so finely structured that their presence is undetectable until a 'phase transition' is triggered, resulting in air motion being locked together with the underlying subtler energy flow. This is the origin of earth energy vortices at either stone or crop circles.

A classic demonstration of this principle occurred in 1994 in the Sussex Birling Gap formation where this vertical energy column sliced its way through an electricity power cable. The result was a bifurca-

tion of the resulting crop lay with the columnar vortex flow so chaotically disturbed that the crop lay was not structured but effectively tangled. Additionally, the lateral splitting created also a vertical phase shifting such that the crop was bent at a distinct height above ground level.

Where the energy column intersects with the ground, there is created a hemispherical 'dome'. In fact, there is also its mirror image beneath the ground. Several formations over the last few years have revealed an underlying universal geometry and this is without doubt based on intersecting tetrahedra. The classic example is the 1991 Barbury Castle formation. The hemispherical dome which has mathematical properties closely related to those of soap bubbles is similar to the boundary of a magnetic field. This in turn incorporates two possible

fundamental configurations - firstly, a toroidal shape akin to a holeless ring doughnut and secondly, a central sphere within the hole of a toroid or doughnut. These two basic shapes linked to the all enveloping tetrahedral geometry are shown in Fig. 1. It is from these two forms that we obtain our six- and five-fold geometries so often seen in the crop shapes.

It would seem that the Circlemakers indulge in a mix and match principle to create particular resulting crop patterns. They combine the symmetrical and asymmetrical patterns in a sequence of bifurcations, starting with the largest and finishing with the smallest. This way, by controlling the bifurcating sequence (and this is the secret of shape determination), a large number of patterns can be generated. A classic shape was seen in the fields of Sussex during 1995 and this was the Southeast formation. Fig.2 shows how the nested bifurcating toroids created the pattern. The result was a perfect diatonic set of ratios of diameters. The shape is encoded in an algorithm which is similar to a short musical phrase.

Not only does the set of toroids create patterns but the 'framework' tetrahedral geometry encodes specific angles, which are well known in sacred geometry. The first is the angle of the pyramid at Giza with a base angle of 51.83 degrees. This is

related to five-fold geometry and hence the Golden Ratio. What has previously not been discussed in detail is the angle from the centre of the sphere to a vertex of a tetrahedron. This angle is $\arcsin(1/3)$ which is 19.47 degrees. Those familiar with Richard Hoagland's work on Mars will recognise this as the angle of latitude of Olympus Mons on that planet. On the Earth, there is a similar occurrence, namely that the latitude of the volcano Mauna Loa on Hawaii is precisely the same. How can this be so? One suggestion made here is that this angle is inherently related to the toroidal structure and associated waves which is also very much a part of planetary geometries together with their magnetic fields and plasma particle belts which surround them. The effect is like the boundary line between the bow wave from a ship and the calm surrounding sea. Although the structure of such a wave changes in detail with the ship's speed and length, the remarkable fact is that the bow wave vortex semi-angle remains fixed at 19.47 degrees - the dividing line between order and chaos. All this comes from the so-called dispersive nature of water waves, ie. the fact that waves of different wavelength travel at differing speeds.

If all the above is indicating some universal phenomenon, then this angle too should be detectable in crop patterns. This remained pure speculation on

my part until it twigged that one other Sussex formation held the key to this angle. The 1995 East Grinstead (Felbridge) formation as seen in Fig.3 resembled a set of propagating waves. It was only when measured, that the bow-wave angle was calculated from the measured data to be very close to 19.47 degrees. Such is the benefit of accurate surveying - theoretical predictions can be confirmed. Since this work, I have been further able to show that the plasmas created in the formation of crop circles exhibit a close relation with those generated in the ionosphere. At the very low frequencies involved, the plasma waves also travel in a cone whose semi-angle is, you guessed it, 19.47 degrees.

The fundamental physics of the circle phenomenon is slowly revealing itself. In particular, the subtle energy waves are now seen to be of low frequency and dispersive and exhibit characteristics similar to those of common-or-garden water waves. This may be only a start to uncovering the links with known physics but these points of contact are where our effort, both experimental and theoretical, should be concentrated. Only in this way can we open up the gaps and reveal the true relationships with our present understanding of the world. JL

- FEATURES -
**19.47
DEGREES AND
ALL THAT**
Some of the Sussex crop formation
designs may embody the key to
their creative sources, believes
JIM LYONS...

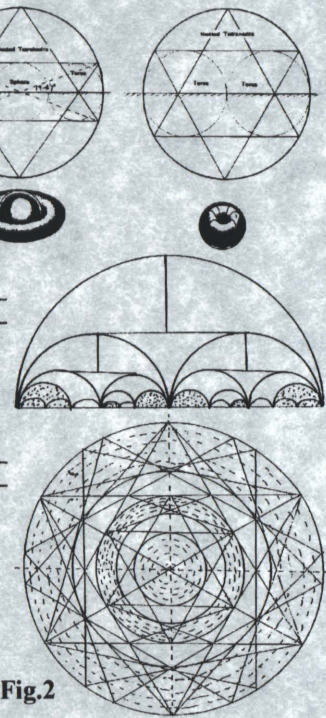
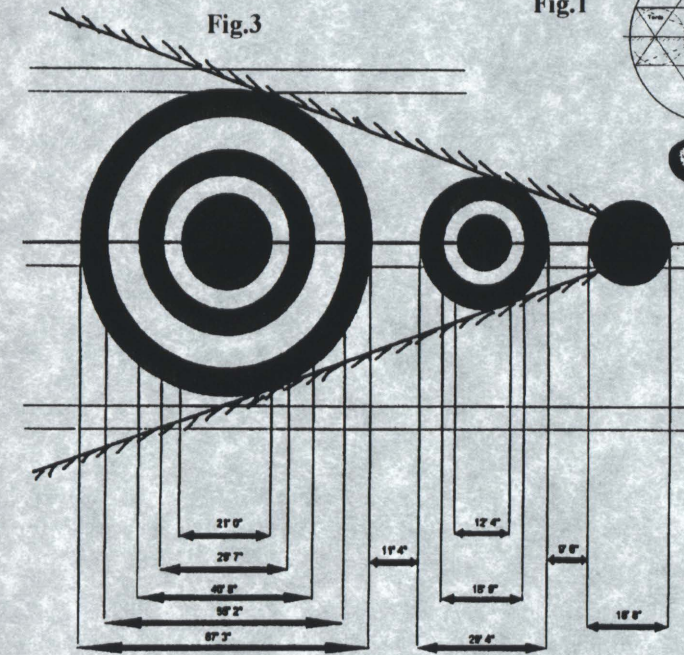


Fig.1

Fig.2

Fig.3

Revenge is best served cold

Cornography

with Michael Glickman

I am spending the summer in Wiltshire, ten minutes from the East Field formation and half an hour from the Stonehenge beauty. The Alton Barnes white horse is visible from my bedroom window.

By several fortunate coincidences, I was in the first group to go into the Stonehenge circle with Francine Blake, Roland Pargeter and others. Like East Field it is beautiful and enormous. It measures 915'6" along the spine. Also like East Field its complex shape is formed of nothing but circles, 151 here, of varied size.

It was too big to clearly read from the ground; aerial images were needed to clarify it. But on the spot its circles demonstrated a range of swirl and lay which seemed like an encyclopedia of circle-making skills. The centres of the smaller circles were a particular astonishment for their stylistic diversity. As you walked from one another they seemed to say "Look what else we can do!"

The Stonehenge formation has produced three remarkable stories. Like all tales in this business they are anecdotal. They shift, Chinese Whisper-like, in every retelling. However they seem to check out.

First. An air-taxi pilot flew in to Thruxton, passing over the field at 5.30pm in the afternoon. There was no formation. He came back by the field within the hour and the circles had arrived. This account is supported by a gamekeeper who apparently saw a clear field during the afternoon and a Stonehenge guard who noticed the circle in the early evening. Thus we seem to have confirmation of a daylight appearance though - of course - nobody has yet claimed to have observed it.

Second. The farmer was incandescent with rage at the "vandals" who had damaged his crop. He refused under any circumstances to allow access and actually turned away when he was shown the drawing. Several people (all women, of course) tried to reason with him, explaining that because of its scale and beauty and also because of its prominent location, it would be impossible to keep people away. Why couldn't he charge for access

and make money? He was intractable and threatened to bring the machines in and cut it out but that evening, without warning, a huge sign went up by the road saying "Come and see Europe's best crop circle!". His son was posted by the gate and there has been an unending stream of visitors. Everyone is happy.

Third. In the middle of these discussions the farmer said he had confirmation that it was man-made. There had been a call, anonymous needless to say, from a young man who claimed to have made it. He was most apologetic and offered the farmer £500 in compensation.

This signalled to me at least, an escalation in the sophistication of the Circle Claimants' tactics. There was a moment when it appeared the hoax supporters might be upping the stakes.

However, the farmer eventually admitted he had made up the story to discourage interest!

Aside from all this nonsense, we should remind ourselves that, in these two majestic crop circles, we have been given a pair of the most wonderful formations ever.

We were blessed, ten or more years ago, with a group of worthy and committed pioneers who should by now have taken their rightful place as our elders and wise men.

It is distressing to see how many have become our fools and clowns. The largest body of support for the now totally hollow hoax hypothesis is with these seniors. Alton Barnes and Stonehenge which surely must be among the most impressive formations of all time are already alleged to be fakes by some. As always, the 'evidence' cited is so thin as to be surreal. It is a credit to this tribe that we treat these outbursts with such sympathy, tolerance and patience. Their ideas are generally so unsustainable that, were they to be advanced in any other arena, their authors would be considered insane.

I believe the crop circles are beyond our current understanding. I am happy, like many of us, to say that I have absolutely no explanation for these astonishing events. But surely those who choose to find conventional origins for the crop circles must be expected to support their hypotheses with conventional common sense.

We should not be surprised at this lunacy. The Flat Earth Society, as John Haddington reminds me, still has 3000 members. **MG**