



THE CEREOLOGIST

NO. 34/SUMMER 2002

• THE JOURNAL FOR CROP CIRCLE STUDIES •

PRICE £3.50

CORNELIA

Christine Rhone - p.2

CROP CIRCLE CO-
CREATION 2001

Ed Sherwood - p.3

ADAM AND EVE AND
BIG DISBELIEF IN GOD
(AGAIN)

Neil Olsen - p.13

PHOTO GALLERY 2002

(Part One)

*Lucy Pringle/Steve
Alexander* - p.14

CROP CIRCLE
EMPOWERMENT - THE
COST OF DECEPTION

Synthia Andrews - p.16

REVIEWS/LETTERS

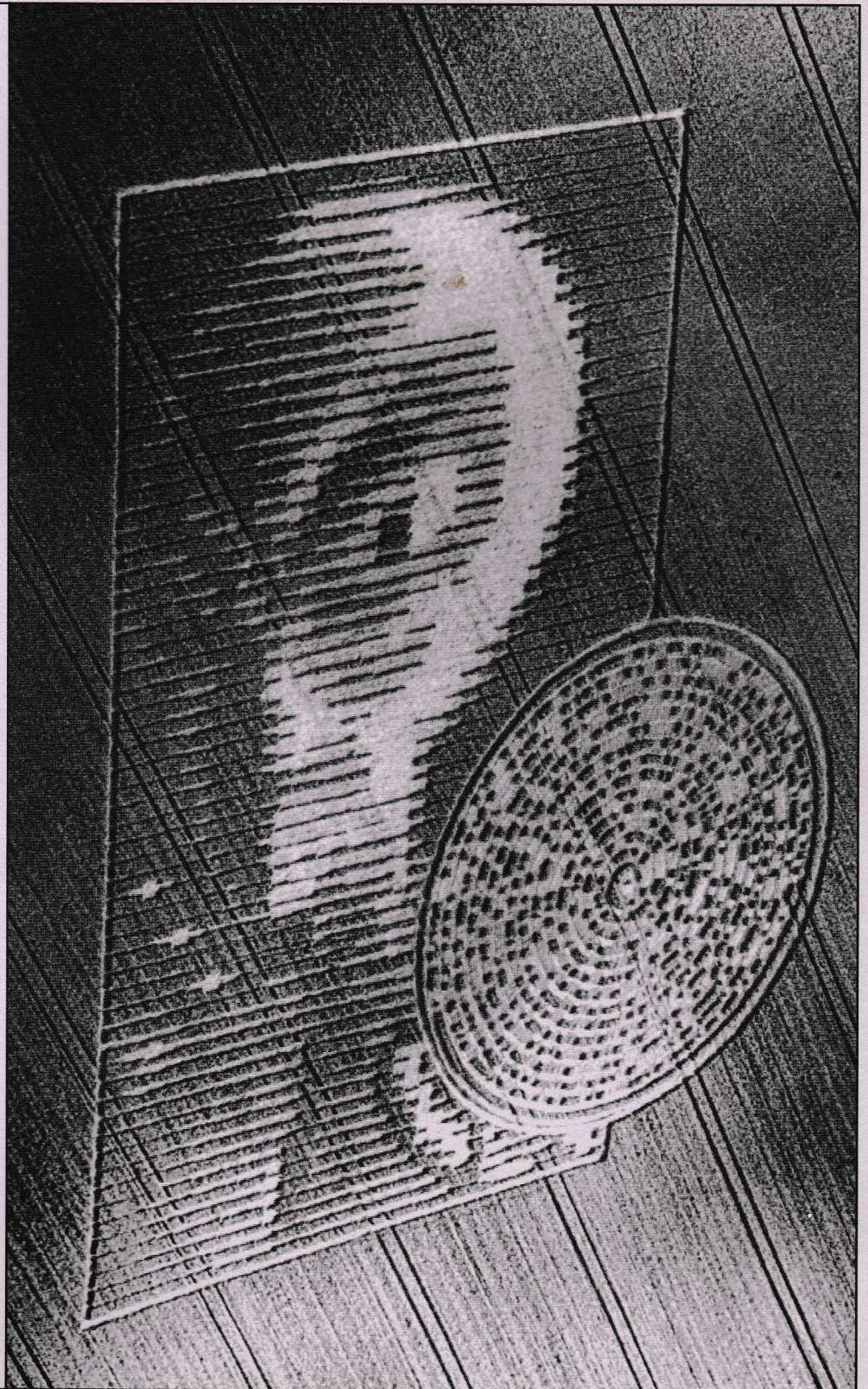
*Christine Rhone/Mick
Hardy/Adriana Forbes*
- p.18

A LAND OF MILK AND
HONEY

Derrick Hunt - p.20

THE 2001
WOODBOROUGH HILL
FORMATION

Andrew J. Buckley - p.21



Editor

John Sayer

The Cereologist is published three times a year in
April, August & December

Editorial address:

John Sayer
17 Spindle Road
Norwich
Norfolk NR6 6JR
England

Tel: 01603 - 486722

e-mail: john23@sayer.abel.co.uk

Global Circles web site:

<http://www.sayer.abel.co.uk>

Annual subscription rates including postage (airmail abroad):

UK - £12.00, Europe - £15.00, elsewhere - £18.00 /US\$35.00

Cheques/postal orders (no credit card payments or foreign cash) made payable to "The Cereologist"
Sterling cash may be sent, but at sender's own risk

Advertising rates

Full page (27cm. x 18cm.) - £80.00
Horizontal half-page (18cm. x 13cm.) - £50.00
Vertical quarter-page (8cm. x 13cm.) - £30.00
(Rates for multiple insertions negotiable)

Printing

Crowes Complete Print, 50, Hurricane Way, Norwich,
Norfolk NR6 6JB (01603 - 403349)

The contents of this journal do not necessarily reflect the views of the editor or anyone involved in *Global Circles Research*. Contributions are accepted on the basis that they are submitted exclusively to *The Cereologist* and that they may be edited. Copyright on material published remains with the relevant contributor.

Consultants

Richard Andrews (†), J.J. Evendon, Michael Green,
John Haddington, Ron Jones, Daniel Lobb,
Peter Sørensen, Leonie Starr, Busty Taylor,
Don Tuersley, Paul Vigay, George Wingfield

Front Cover: Crabwood, nr. Winchester, Hants. (Lucy Pringle)

EDITORIAL

IT IS EXTREMELY seldom these days that I can say with any degree of certainty that I was "the first into a crop circle" but on this occasion, I'm 99.9% convinced this was the case.

The first known formation in Norfolk this year appeared in a field of barley ten miles north of Norwich, right on the outskirts of Aylsham (trivia: where once upon a time I lived and taught at secondary school).

My partner Jane Coles and I had first spotted the ringed circle ourselves as we were on our way to Cromer and Sheringham on Sunday, 21st. July. The formation being so close to houses and a motel, I expected it to have been visited already, so took a somewhat leisurely drive out there from Norwich the next day, armed with my measuring kit and OS map, with the intention of finding the farmer and, with luck, conducting a field survey.

As it happened, with the first (nearest) farmhouse I tried, I struck gold. The farmer knew of the circle (he recalled it was the previous Tuesday or Thursday he'd first seen it, so we're calling it Wednesday, 17th. July for convenience) and was quite happy to let me have a look at it, informing me of a "driveable" dirt track, whose entrance was quite hidden, which ran along the side of the field parallel to the main road and which I was welcome to drive down. I would find myself facing a sizeable area of set-aside between the barley field and the road and would be able to cross it straight towards the formation.

I had earlier pushed a note through the door of Mick Hardy, chairman of the Norfolk UFO Society (NUFOS), to let him know where I was going. Hopefully, he would cycle out in time to join me. It was a hot day and I didn't know how much I'd be able to manage on my own.

(cont'd. on p.27)

CORNELIA

by Christine Rhone



"Spirits, ETs, or silicon-based mentality?"

CROP CIRCLE CO-CREATION - 2001

Signs of a psycho-spiritual 'source' behind non-manmade crop circle creation at a place called 'Gog Magog'. Ed Sherwood.



(Figs. 1 & 2: 'Offering' the 'Medicine Bag' and the Crop Circle Sign, as the setting sun synchronously emerged through cloud cover. Video JPG © Thomas Sorlie/CircleSpeak)

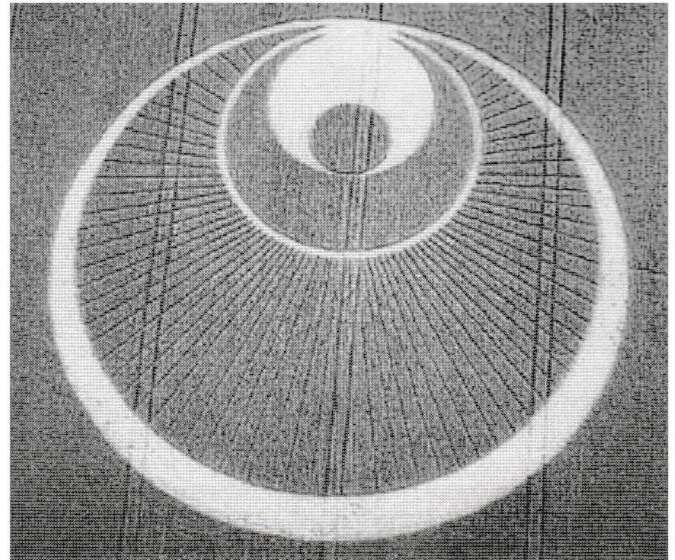
*"The spotlight of consciousness is something so tremendously powerful. This spotlight of consciousness is a **sunlight** by itself."*

(From the book *"Uri: The Authorised Biography of Uri Geller, The World's Most Famous Psychic"* by Andrija Puharich.)

HOLDING A 'MEDICINE BAG' up to the sun, I symbolically, and verbally, acknowledged 'God' as the primary 'Source' of the worldwide non-manmade Crop Circle phenomenon. I also acknowledged the Sun, as a major 'Co-creative' element and aspect of the 'physics' of most non-manmade Crop Circle Creation (Refs. 1 & 2). After acknowledging the Sun, and the 'light behind the light', I made a request. I asked the 'Infinite Intelligence and Consciousness of God' for continued Crop Circle signs and wonders in 2001, **affirming God** as the principle Source of non-manmade Crop Circle creation, and the 'focus' of human consciousness, like the Sun, as another important Co-creative element and aspect. To support this request the Medicine Bag was also presented as a 'Crop Circle Co-creation' experiment; to see if a specific Crop Circle formation displayed on the front of the 'Bag', to the Sun and God, would be interactively 'reflected' back in the fields. Amazingly, two and a half days later it was, when an apparent Crop Circle 'response' to my request, and experiment, was discovered in a wheat field near a place name in Cambridgeshire, identified in the last book of the Bible (Revelation 20: 7-9), with a **genuine Sign of God!**

An 'Offering' to the Sun and 'God'

On top of the West Kennett Long Barrow in Wiltshire, with the largest ancient sacred pyramidal mound in Europe (Silbury Hill) in view, I symbolically 'offered' the Medicine Bag and Crop Circle symbol to the Sun and God. It was approximately 8:57pm. (GMT) on **22nd. July 2001**. Discreetly planned many weeks in advance, it was a 'ceremonial' act to support a



(Fig. 11: The 'Gog Magog' Hills Crop Circle Pictogram Cambridgeshire, UK - discovered 25th. July 2001. Steve Alexander)

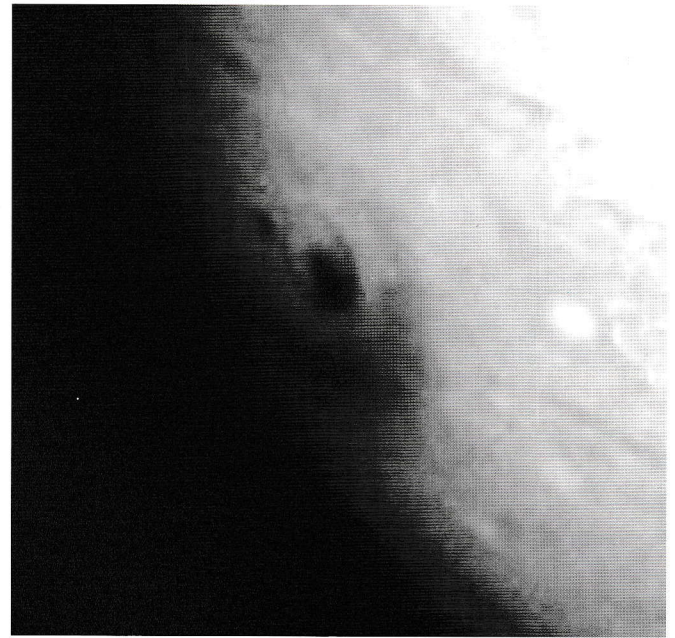
synchronised group 'Earth Healing' Meditation, and Crop Circle Co-creation experiment. In the US, in three different locations, synchronised to meditate with myself, at a time equivalent to 9pm. in the UK, were Kris (Sherwood), her daughter Lori Matthews and our close friend Ron Jagger. In the UK, the offering, synchronised meditation and experiment was witnessed and filmed by three US Crop Circle documentary film makers: Lawrence Newnam, Kirk Kirkland and Thomas Sorlie, who were present to *record* the event. (Figs. 1 & 2, Ref. 1).



(Fig. 3: The 'Medicine Bag' & 'Ring Pouch' Ed Sherwood/Millennium Research)



(Fig. 4: The Roundway Crop Circle Formation, Wiltshire. Discovered 24th. July 1994. Colin Andrews)



(Fig. 5: The 'G-Impact' Effect in the Atmosphere of Jupiter. NASA/JPL Educational Services)

Held throughout the offering, the Medicine Bag was decorated with two Crop Circle formations that were very meaningful to Kris and I (Fig. 3, left). On the front, and facing the Sun, was a silhouette drawing of a pictogram from 1994 (in view). On the back was a formation from 1997, also depicted on a 'wedding ring pouch' (Fig. 3, right).

The medicine bag was taken to England and ceremonially offered to the Sun, and God, for three principle reasons: **It signified 'Earth Healing'; a 'Marriage'; and Crop Circle 'Co-creation'.**

First, it represented **Earth Healing**; the main theme and purpose of the group meditation.

The symbolic gesture of offering the medicine bag signified the primary motivation, intention and commitment of the group, to synchronise in Consciousness, and combine psychokinetic energy as a Collective Conscious 'Focus', for World Healing. Inside the 'bag' were three 'rocks', representing the three psychic supports: Kris, Lori and Ron. Since our first meeting in 1995, Kris and I have organised and participated in several hundred synchronised group earth healing visualisation meditations. The Medicine Bag also symbolised our commitment to this activity.

Second, it symbolised a **Marriage** between '**Heaven and Earth**', and Earth and Heaven.

'As above, So below'. As millions of people around the world received news that for the *first* time in human history an 'Earth killing' Comet would be witnessed impacting a neighbouring planet, **sequential events** mirroring those in space began to appear in the crop fields of Wiltshire and Hampshire in 1994 (Figs. 4 & 5, Ref. 4).

Months later, in the 1994 November issue of "Astronomy Magazine", a dramatic image of Jupiter, showing the impact effect of the largest Comet fragment: the '**G-Impact**', was discovered by Kris to bear an amazing resemblance to the Roundway Crop Circle formation and Shoemaker-Levy 9 Comet G-Impact also shared another detail in common a small side circle! (Fig. 5, Ref. 4).

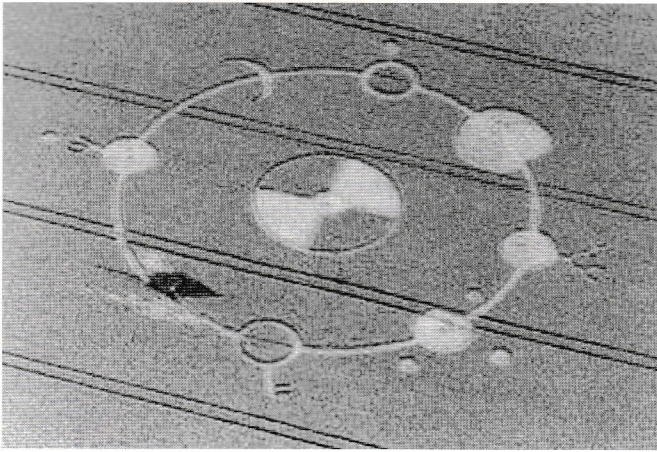
Rotated circles and crescents defined and differentiated the 1994 pictogram from the exact G-impact image but amazingly revealed yet another possible *related* layer of meaning to the

formation. Perturbing and consuming the orbiting motion of asteroids (Ref. 5) and **Comets**, including the Shoemaker/Levy 9 Comet (Ref. 4), the Sun and **Jupiter** are locked in an oscillating cycle known to astronomers as the '**Solar Oscillation**', or 'Jupiter Effect' (Ref. 2). Basically, the Solar Oscillation is the oscillating motion of the Sun through the 'Milky Way Galaxy', caused by the '**alternating pattern of conjunctions and oppositions**' between the ever-changing movements and positions of the more massive planets in our solar system, particularly Jupiter. This cycle, I learned and began disseminating in Autumn 1991 is, I think, a major aspect of the physics of most non-manmade Crop Circle creation and could explain why at Roundway in 1994 the 'impact crescents' were rotated. Turned 90°, three times, they reflected, in my view, the fundamental force of *rotation*: **angular momentum** and by inference its counterpart: **gravity**, the two Cosmic forces that ultimately sent the Shoemaker/Levy 9 Comet fragments crashing into Jupiter! (Ref. 4).

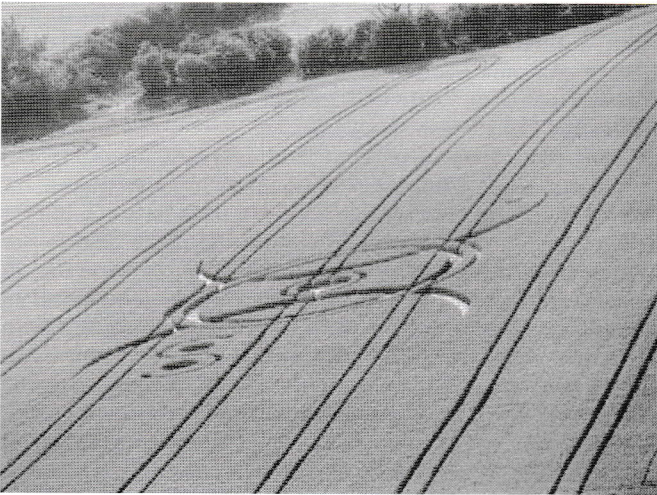
On the night of **22nd. July 1997**, Kris and I presented our findings about a Crop Circle pictogram that had appeared at **Roundway and Silbury Hill** to an audience in Glastonbury. Kris shared (with an English audience for the first time) her observations about the Roundway formation of 1994 (Fig. 4) and I related my interactive experience and 'decoding' of the Silbury Hill pictogram of 1992, also known as the '**Charm Bracelet**' and the 'Dharmic-Wheel' formation (Fig. 6, Ref. 2 & 6).

The following morning, to our amazement, as if in *direct* 'response' and an affirmation to what we had shared hours earlier, *two* Crop Circle pictograms were discovered near Roundway and Silbury Hill! (Figs. 7 & 8). Incredibly, *both* formations depicted (amongst other things) what Kris later discovered to be an ancient alchemical symbol used to represent the spiritual concept of the '**Philosopher's Stone**' and the '**Sacred Marriage**'! (Refs. 4 & 7).

With two large back-to-back crescents symbolising '**Pisces**', a symbol also used to represent the alchemical Philosopher's Stone and Perhaps Kris (a Piscean, whose initial by Marriage is 'S'), the Roundway Crop Circle pictogram of 1997 seemed to *affirm* Kris' previous discovery and shared observations of



(Fig. 6: The Silbury Hill Crop Circle Formation ('The Charm Bracelet') Depicting Nine Cross Referencing Design Elements, Wiltshire. Discovered 18th. August 1992. Maria Ward)



(Fig. 7: The Roundway Crop Circle Formation, Wiltshire. Discovered 23rd. July 1997. Nick Nicholson)

the 'G-impact' formation, found at the same spot in 1994 (Fig. 7).

Similarly, the Silbury Hill Crop Circle pictogram of 1997 seemed to reflect and affirm observations I made about the Charm Bracelet formation of 1992. During the 1997 Glastonbury presentation, entitled 'Exploring A Crop Circle Hologram', I described how the Charm Bracelet was related to Silbury Hill and other major sacred 'Temple' sites around the world. These include 'The Great Pyramid' at Giza in Egypt and 'The Circular Mound' at 'The Temple of Heaven' in Beijing, China, where Nine Forces of Creation were deified as 'Gods' and revered as 'Dragons' in ancient times (Refs. 2, 6, 18 & 19).

Looking like a symbolic, three-dimensional 'Mound of Creation', a 'Temporary Temple', paired with Silbury Hill, the 1997 formation reflected and affirmed 'The Nine-ness of God'. Instead of nine primary design elements, the pictogram was adorned with 126 small circles ('pearls') around a geometric form, known as a 'Koch 1 Snowflake', of 18 points. In numerology, 1+2+6 and 1+8 added together reduces to 9. Also, as Kris discovered shortly after the formation appeared, the geometry of the 1997 pictogram, a six-pointed star, in ancient Celtic tradition is the geometry of the Ninth Rune! Incidentally, throughout the Glastonbury presentation I had in my pocket a charm bracelet depicting the Ninth Rune (Refs. 2 & 7).

Used by Mediaeval Alchemists to represent the

Philosopher's Stone, Margaret Starbird writes that the archetypal star hexagram (also known as the 'Star of David' and 'Solomon's seal') signifies 'the masculine and feminine principles in perfect union, the "sacred marriage" or "hieros gamous" of the ancient world'. She adds that it symbolises the union of 'opposite energies' and that it is the "'yin-yang" of Western civilisation' (Refs. 2, 6 & 17).

With the 'centre' symbol of the Charm Bracelet formation reflecting (amongst other things) yin-yang, I described in the talk how the other eight symbols seemed to be organised to be read like the Chinese 'Pa Kua', in a clockwise direction and in 'pairs', with symbols of 'opposite' meaning, facing each other (Ref. 2).

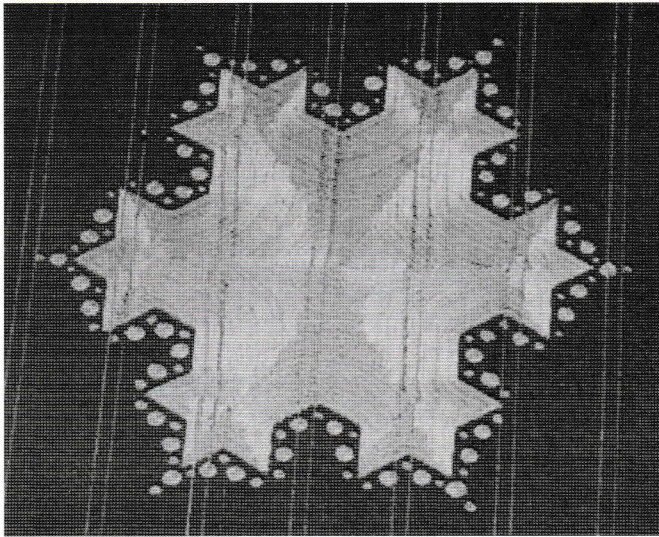
Speaking about the connection between the sign at the centre of the Charm Bracelet formation and 'Sound' (Ref. 2), I quoted from the opening chapter of the Gospel according to John: "In the beginning was the Word, and the Word was with God, and the Word was God" (Ref. 3). Referring to the 'Word' (God) as a metaphor for 'sound', 'vibration' and 'Creation', ('The Big Bang'), including most non-manmade Crop Circle creation, I described how the Word was reflected in the symbol at the centre of the Charm Bracelet pictogram (Ref. 2). Amazingly, as if to affirm this, the Silbury Hill pictogram of 1997 also represented the Word, in my view, when it reflected the shape of a geometric form that can be generated by the transmission of sound waves through a liquid medium! (Ref. 20). Additionally, the Word was symbolised by a single 'grapeshot-sized' Crop Circle that appeared just off one of the 'fractal star' points, beyond the circle-decorated perimeter. (Fig. 9 shows the pictogram before the small circle had appeared.) As Kris discovered, reading 'The Archetypal Mandala of the Star of David', the alchemical symbol of the Philosopher's Stone, when accompanied by a 'dot' (or in this case a small circle) on the upper right hand point, represents 'the presence of God and guidance of the Divine Spirit!' (Refs. 7 & 17).

Shortly after Kris and I visited the pictogram at Roundway and Silbury Hill in 1997 we also discovered in the Biblical book of 'Revelation' a possible reference to the Philosopher's Stone and one of the two crop Circle ('holy Jerusalem', 'Sacred Marriage') pictogram sites (Figs. 8 & 9, Ref. 3).

'And he carried me away in the spirit to a great and high mountain, and shewed me that great city, the holy Jerusalem, descending out of heaven from God, Having the glory of God: and her light was like unto a stone most precious, even like a jasper stone, clear as crystal;' (Revelation 21: 10-11).



(Fig. 8: The Silbury Hill Crop Formation, Wiltshire. Discovered 23rd. July 1997. Steve Alexander)



(Fig. 9: Silbury Hill from the 'Boundary' of the 1997 Pictogram, 23rd. July 1997. Ed Sherwood/Millennium Research)

Considering the possible literal and metaphorical meaning of the two Revelation verses, the 'great and high mountain' could be interpreted as the ancient sacred pyramidal 'temple' mound of **Silbury Hill** (Fig. 8), less than half a mile away from where the most recognisable symbol of the Philosopher's Stone - a star hexagram ('a stone most precious') had appeared! (Figs. 8 & 9, Ref. 7).

In previous and later verses referring to the 'bride' of the 'Lamb', Kris and I feel that '**her light**' can be seen as a reference to '**Gaia**' or 'Mother Earth'. In our view, it was Gaia that had '*the glory of God*', with the prophesied arrival of a non-manmade Crop Circle pictogram symbolising (amongst other things) the sacred Marriage of Heaven and Earth, the holy (New) Jerusalem, the Philosopher's Stone, and the 'presence of God', all multiplied, in one formation. As Kris later aptly described in her article 'The Philosopher's Stone: A Stone Most Precious', "The complex interweaving of the ground lay created a glistening, crystalline image that moved with depth and dimensional structure when viewed from the air, its green gold facets gleaming *'even like a jasper stone, clear as crystal;'*" (Fig. 9, Ref. 7).

In addition to representing, in various ways, a marriage between Heaven and Earth, the Medicine Bag also signified an Earthly marriage and a marriage between '**Earth and Heaven**'. It was a wedding anniversary gift I made for Kris at a sacred site in 1999. Its two '**Round-way**' Crop Circle formations were drawn on the bag to represent our commitment and marriage to each other *and* to the non-manmade Crop Circle phenomenon, as two dedicated researchers. Both were, in our view, acknowledged and reflected in the pictogram at Roundway in 1997 (Figs. 3 & 7).

Stated *three times*, our marriage was depicted in the form of two large astrological 'Pisces symbol' crescents, 'joined' by the alchemical symbol for '**Gold**', a single ringed circle, or dot. Our three 'wedding bands' were apparently represented by the pictogram's **three rings**. Looking down our wedding ring fingers and in comparison, out from the centre of the formation, I wear a single gold band and Kris wears two: a larger thin ring and a smaller thicker ring! Our marriage was further stated by the '**S**', 'holding' a 'bonded' pair of circles ('two people'), which could represent Ed and Kris 'Sherwood' (Figs. 3 & 7). The inclusion of the S was the *first* time a 'letter' of the English alphabet and possible 'initial' had been depicted in a *non-*

manmade Crop Circle formation.

As incredible as it may seem that 'personal references' had been depicted in a non-manmade Crop Circle formation, we understood it wasn't because we were, or are, 'special'. Instead, we feel the primary 'Source' of non-manmade Crop Circle creation gave 'everyone', including us, an '**affirmation**', that what was presented in Glastonbury in 1992 was **TRUE!**

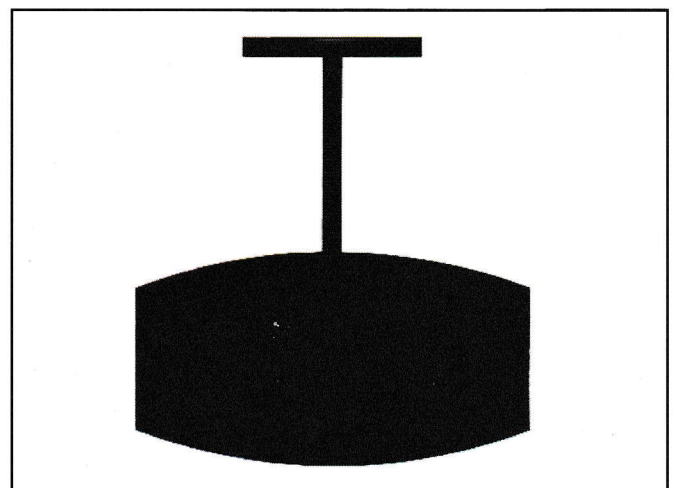
A more recent 'personal' Crop Circle '**sign of Confirmation**', in my view, occurred during the predawn hours of 21st. August 2001 to Crop Circle researcher Nancy Talbot. While staying with Robert v/d Broeke in Southern Holland, Nancy witnessed a dramatic light display precede the appearance of a simple non-manmade Crop Circle pictogram, that included the letter 'T', after asking out loud, "**Why can't this phenomenon be more obvious, more direct?**" This was the *second time* a researcher's initial has been directly referenced in a *non-manmade* formation (Fig. 10, Ref. 8).

Thirdly, in addition to Earth Healing and a Marriage, the Medicine Bag also represented non-manmade Crop Circle **Co-Creation**.

Since early 1991 I have widely presented the theory that most non-manmade Crop Circle formations are 'Co-created', from a complex combination of elements that include the **focused psychokinetic energy** (the 'spotlight') of human **Collective Consciousness** (Ref. 2).

For example, on the night of **22nd. July 1992**, I participated in a spontaneous group meditation involving **visualising**, for approximately twenty minutes, a *new* Crop Circle symbol for the genuine circle-creating intelligence to make. Held after sunset, on Woodborough Hill, near the village of Alton Barnes in Wiltshire, it was a discrete experiment initiated by Dr. Steven Greer and supported by the late Shari Adamiak, Colin Andrews, Maria Ward, Linda Howe, Ron Russell, Lynn Gladwyn, George Wingfield and myself. A few minutes before meditating, Dr. Greer asked the group to silently intuit a possible design. After a couple of minutes he then asked everyone in turn what they thought. Interestingly, seven out of *nine* people, including myself, all thought of the same thing: three equally sized and spaced apart circles, arranged in an equilateral triangle, each connected by a narrow straight pathway towards their centres. This symbol was then visualised and 'transmitted' into the Cosmos by the group mind. Amazingly, hours later, a few miles away, for the first time anywhere, the exact Crop Circle sign was discovered in a wheat field at Roundway (Ref. 9).

In my view, the focus of '**Human Consciousness**' was also 'reflected' in the pictograms found at Roundway in 1994 and



(Fig. 10: The Hoeven Crop Circle Formation, Holland. 21st. August 2001. Ed Sherwood/Millennium Research)

1997. In 1994, *combined* human attention and awareness of the **Shoemaker/Levy 9 Comet phenomenon towards Jupiter** and the unfolding Crop Circle phenomenon on Earth, in my view, significantly contributed towards 'Co-creating' certain non-manmade Crop Circle formations in the fields. Perhaps due to so many people, or minds, being aware of both Consciousness-raising phenomena during the Spring and Summer of 1994, this is why the historic event on Jupiter also became the *dominant non-manmade (and manmade imitation) Crop Circle pictogram design theme of 1994 (Ref. 4)*. Similarly in 1997, perhaps the energy of combined attention and awareness given to what Kris and I presented to an audience in Glastonbury, about two Crop Circle formations, 'served' to co-create two new formations at the same two sites (Ref. 7).

On 22nd. July 2001 the focused attention of seven people was combined for the purpose of holding, and documenting, a solo ceremonial offering, a synchronised group Earth Healing meditation and a Crop Circle Co-creation experiment.

A Crop Circle 'Co-creation' Experiment

The Crop Circle Co-creation experiment was very simple. Instead of visualising a *specific* Crop Circle symbol, or requesting one to form, throughout the ceremonial offering I intentionally presented one, on the front of the Medicine Bag (Fig. 4). For the experiment I chose the Roundway pictogram of 1994 to 'test' my theory of **psychokinetic** Crop Circle Co-creation. If successful, it would affirm again, in my view, the co-creative 'role' that human Consciousness plays in non-manmade Crop Circle Creation by an 'Infinite Source' and be **documented on film!**

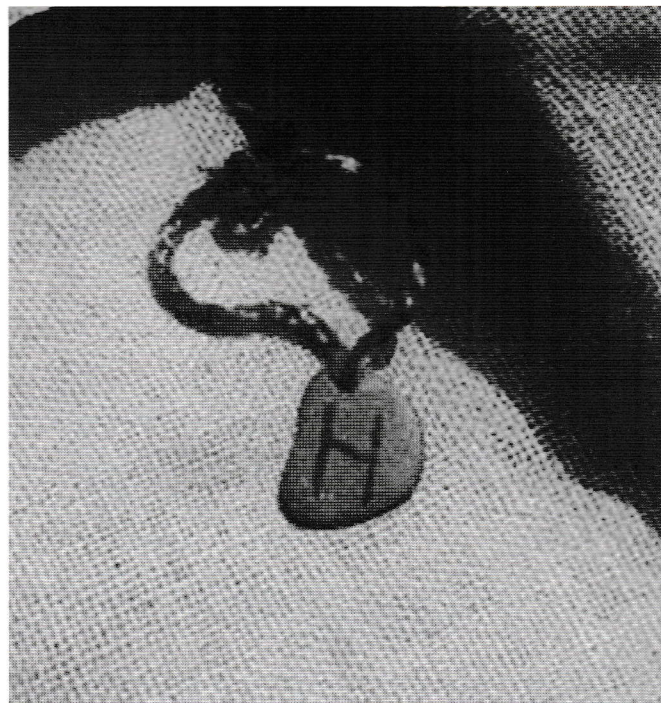
To protect what was the most important meditation and experiment held during my UK 2001 research trip and prevent deceptive human circle making, what was intended and performed at the West Kennett Long Barrow was discreetly organised and not revealed until the Crop Circle 'season' of 2001 was over. Only six trusted participants (three meditating and three filming), myself and the 'Almighty' knew about the experiment at the time (Ref. 1).

A 'Psycho-Interactive' and 'Reflective' Response

Incredibly, two and a half days after conducting the ceremonial offering, synchronised meditation and Crop Circle Co-creation experiment, a stunning Crop Circle 'response' was discovered in a wheat field below the Gog Magog Hills, near the ancient sacred site of Wandlebury Ring in Cambridgeshire (Fig. 11, Ref. 1).

The Crop Circle pictogram discovered below the 'Gog Magog' Hills on 25th. July 2001 was quickly named 'The Angel' formation. With 'arms' raised, as if in ceremony and celebration, this seemed like an apt title. Looking at the design in this manner, it could perhaps also be interpreted as presenting something. (Could it be a 'Medicine Bag' offered to the Sun and God? - Fig. 11).

With design elements strikingly similar to the Crop Circle symbol offered to the sun and looking almost identical to what the 1994 Roundway formation had actually represented, the Gog Magog Hills pictogram, measuring exactly 237 feet wide, also included 75 straight radiating lines, like symbolic sun 'rays', in its design! Measured by Charles Mallet, the lines or rays were reported to be only six inches wide. Amazingly, the direction of the flattened wheat forming each ray was also reported by Paul Newman (not to be mistaken for the well know actor) to alternately flow either towards or away from where the lines radiated. In his article entitled 'The Cambridge Crop Circles: What Do They Mean?', Paul went on to state



(Fig. 12: A 'Charm Bracelet' Depicting the Ninth Rune. Ed Sherwood/Millennium Research)

that Carol Cochrane observed that 'Wandlebury Ring, Cambs' and 'Gog Magog Hills, Cambridgeshire' both contain the lexigrammed words "**Sacred Marriage**"! (Fig. 1).

If viewed three-dimensionally, Kris and I thought the Angel formation could represent **Silbury Hill**, the steep conical mound that was clearly visible from the West Kennett Long Barrow during the offering and synchronised meditation. Perhaps the 'head' of the Angel also symbolised the mysterious 'hole' in Silbury Hill, seen from above (Fig. 11).

After presenting the Medicine Bag to the Sun, the physical and spiritual 'Source' symbol of all life, the 'Solar logos', I put the bag around my neck and wore it throughout the synchronised meditation and Crop Circle Co-creation experiment on top - and later inside - the long barrow. I then took two artifacts, one in each hand, and held them for the duration of the meditation. One of these was synchronously given to me as a "gift from the Universe", for completing a series of eighteen Earth Healing meditations in 1995, at an ancient sacred site known as 'The Nine Barrows' and is a 'charm bracelet' depicting the **ninth rune!** (Fig. 12). Could this have also been reflected in the Gog Magog formation?

Interestingly, numerologically, the number of design elements of the Angel formation did reduce to **nine**, with six circles and seventy five lines ($6 + 7 + 5 = 18$ and $1 + 8 = 9!$). Nine, I first discovered and began disseminating in early 1991, is a highly significant number, that has been referenced every year, in the timing, placing, geometry, mathematics, numerology, design symbolism and meaning of many non-manmade Crop Circle formations since the early 1980s (Ref. 2).

The Angel formation was, in my view, an affirmative 'response' to the discreet ceremonial offering, synchronised group Earth Healing meditation and Crop Circle Co-creation experiment held and filmed at the West Kennett Long Barrow. Why did it appear near Cambridge, many miles from the meditation site? I think it formed below the Gog Magog Hills because it was also, in part, a prophesied response to a **deception**, perpetrated by individuals in the form of a Crop

Circle pictogram that was discovered near the Gog Magog Hills on 11th. July 2001!

Crop Circle Deception 'Answered'!

'And when the thousand years are expired, Satan shall be loosed out of his prison, and shall go out to deceive the nations which are in the four quarters of the earth, Gog and Magog, to gather them together to do battle: the number of whom is as the sand of the sea.' (Revelation 20: 7-8)

A thousand years have recently expired and during the summer of 2001 a drama symbolised in the book of Revelation also seems to have been echoed in the crop fields of England and elsewhere. Looking at a graphic illustration of a Revelation prophecy below the Gog Magog Hills (Chapter 20: 7-9), two Crop Circle pictograms were reported in July 2001 (Ref. 3).

'And they went up on the breadth of the earth, and compassed the camp of the saints about, and the beloved city: and fire came down from God out of heaven, and devoured them.' (Revelation 20: 9).

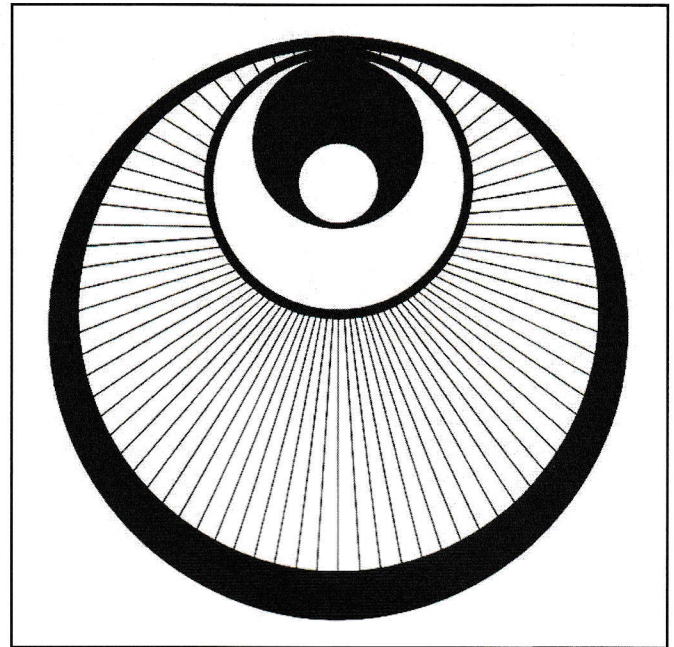
The first formation, reported on 11th. July, began as a simple 45 foot diameter circle at the centre of an 18 foot wide ring, measuring exactly 666 feet in diameter. This formation, as a glyph, is a sacred symbol that has been used in ancient cultures the world over to represent the Sun and 'Divinity' and to mark a holy site ('the camp of the saints'). Over a period of about ten days it received additional design elements, whose graphic style indicated they all originated from the same source. This included a 237 foot diameter concentric ring 'maze' and an implied 'temple' square ('the beloved city') inside the main ring. As this formation became more elaborate, it also, as a consequence, in my view, became more contrived looking and intellectualised and characteristically manmade each time (Ref. 11).

However, in contrast, the second pictogram, the 'Angel' formation, like a response to the first (*'and fire came down from God out of heaven'*) also measured 237 feet in diameter, appeared all at once and seemed to originate from an entirely different consciousness source!

Researching Crop Circle design symbolism like a **graphologist** studying the psychology of handwriting, I have noticed that a psychological 'profile' of the mind or minds that conceived them does emerge, especially that which Kris and I see to be the primary source of the non-manmade phenomenon. The consciousness, intelligence, personality, self or ego (if there is one) and intent of a formation's 'Creator' or maker is invariably reflected in a formation's design, geometry and numerics, even when attempting to imitate, affirming the axiom *"By their fruit, ye shall know them"* (Ref. 3).

For a number of years, one of the Crop Circle hoaxing teams, calling themselves 'Team Satan', has occasionally indicated their work by either placing a pictogram at a geographical location corresponding to a map reference of '666' or by incorporating this number into the measurements of a formation. Individuals of this group who, in my view, have been responsible for a great many deceptively made pictograms, have also stated repeatedly when being interviewed that they actively 'target' the views, beliefs and expectations of the more outspoken researchers and try to include these in their crop designs. This, of course, makes sense if your primary motivation and aim is deception.

And when the thousand years are expired, Satan shall be loosed out of his prison, and shall go out to deceive the nations which are in



(Fig. 13: 'Gog Magog' Crop Circle Silhouette Drawing Based on Zef Damen's 'Geometric Reconstruction'. Ed Sherwood)

the four quarters of the earth, Gog and Magog, to gather them together to battle: the number of whom is as the sand of the sea.' (Revelation 20: 7-8)

In 2001, whose formation was the first 'compassed' 'on the breadth of the earth', near a very convenient car park and Wandlebury Ring? It was my impression that 'Team S' was again loose upon the land. As the English countryside ban was lifted (*'his prison'*) in the wake of the livestock illness of 'Foot and Mouth', who would go out *first* 'to deceive the nations', at a place called 'Gog Magog'!? (Ref. 3).

Many people worldwide (perhaps 'the number of whom is as the sand of the sea'), have been led to think, after two decades of deception and misinformation about the worldwide Crop Circle phenomenon, that most, if not all, Crop Circle pictograms are manmade. However, with an abundance of evidence to the contrary, affirmed by many avenues of research, experience and yearly pictograms of the quality of the Angel formation, another old axiom is illustrated - that sometimes 'less is more'.

Crop Circle Clairvoyance Reflected?

I was not the only person conducting a Crop Circle experiment in Wiltshire in July 2001. Unknown to myself, Crop Circle researchers Ron Russell, Simeon Hein and Peter Sørensen, with a number of participants, entered a wheat field with the farmer's permission at Hilmarton on the night of 20th. July, with the specific intention of making a large Crop Circle formation. Their reasons were, in Ron's words, "to test several assumptions about the phenomenon of crop circles, *in situ*, by replicating, as best we could, a geometrical area of flattened wheat in an English field (Ref. 12).

Soon after returning to the US in August 2001, I learned that Peter Sørensen, the team leader, had spontaneously sketched the Crop Circle design for the group to make, which interestingly resembled the Angel formation in a number of respects, particularly after the first stage and night of construction (Ref. 12). Comparing the two formations, some basic design similarities can be seen. Was Peter's inspired idea an example of Crop Circle clairvoyance?

It is possible, I think, that Peter unknowingly intuited the basic form of what was to occur below the Gog Magog Hills. It is equally possible that he received clairvoyantly (though unaware of this at the time) the Crop Circle symbol intended to be offered two nights later at the West Kennett Long Barrow (about eight miles from Hilmarton). And perhaps both were possible.

In early April 2001 Kris and I discussed possible new pictogram design features that could set a *non-manmade* Crop Circle formation that year apart from one manmade and agreed that a formation defined by very **thin precise lines** could do it. Taking part in David Kingston's 'X-Project', we then visualised a formation consisting of thin lines (Ref.13). Though the exact formation we visualised a few times for this experiment did not appear in 2001, fine lines incorporated into a beautiful pictogram below the Gog Magog Hills did!

Drawing the Gog Magog Crop Circle Formation

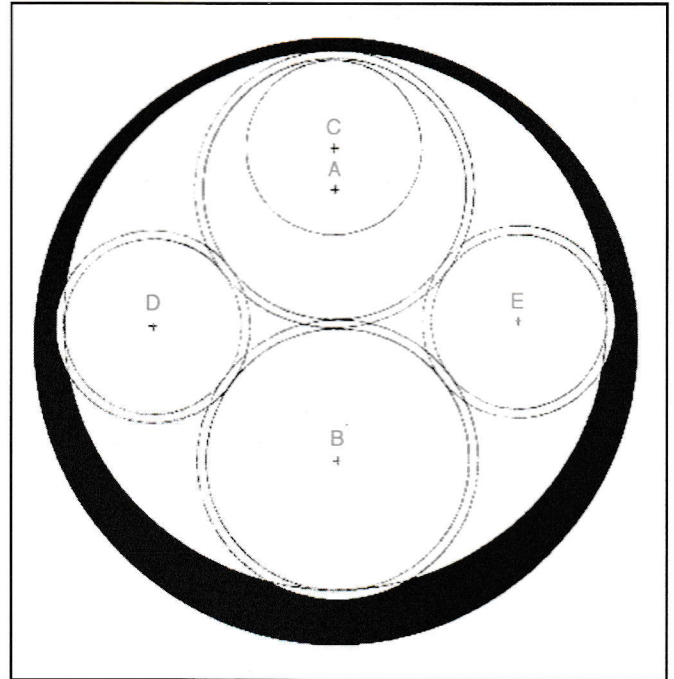
To create an accurate drawing of the Gog Magog Hills Crop Circle formation discovered on 25th. July, I encourage anyone interested to review Zef Damon's excellent 'step by step' reconstruction of this pictogram on the internet (Ref. 14). Like many other pictograms that have appeared over the years involving exquisite geometry, that was precise, harmonious and proportional; slight inaccuracies in construction soon translate into glaring mistakes in geometric design (Fig. 14).

Though appearing quite simple, the Angel formation was actually surprisingly complex, with most of its geometry (i.e. spacing and size of design elements) and construction 'hidden'. For example, at the point where two circles formed a tangent and 75 extremely thin straight lines converged, there was no sign of disruption in geometric precision. There was no crop damage due to physical construction, as you might expect from a manmade version of this exact formation, made under the same conditions, location and time factor (and added stress of being caught on private land). Of course, now that this formation exists, imitations and forgeries employing less on-site geometry could perhaps come close to replicating it. However, 75 geometrically precise equally spaced 6-inch wide straight radiating and alternating lines generated from a distant circle tangent point, divided by a large area of crop would, I think, be a daunting task (Figs. 11 & 13). Compare this formation to one I suspect to be manmade (without the farmer's permission), that appeared near Huish in Wiltshire on 14th. August 2001, just under three weeks later, whose 'makers' seem to have been 'inspired' by flattened thin lines, yet shy of the task exemplified by the Gog Magog formation (Ref. 15).

There were two 'circle radii harmonies' in the Angel formation that when duplicated neatly fitted and touched one another inside the large crescent formed between the two larger circle areas of flattened crop, illustrating how certain radii can correspond with others to create a highly proportional looking formation (Fig. 14).

If the two circle radii whose centre is 'A' are duplicated below it, as indicated by 'B', the inner circle tangents the large crescent's outer circle, while also forming a tangent with the outer circle whose centre is 'A'. If the circle radii whose centre is 'C' is also duplicated as 'D' and 'E', its circle radii also neatly fits within the large crescent's outer circle, while forming a tangent with the outer circle whose centre is 'A' and 'B' (Fig. 14).

John Martineau first observed this type of circle radii feature in a Crop Circle pictogram that appeared near Alton Priors in Wiltshire in 1991, including it in his excellent book 'The Sophistication of Agriglyph Geometry' (Ref.16).



(Fig. 14: Circle Radii Harmonies of the 'Angel' Formation. Ed Sherwood)

Like a 'hologram', the Angel formation was, in my view, encoded with more than one image, 'message' and meaning.

Did the Angel formation answer my spoken request for a Sign affirming God as the principle Source of most non-manmade Crop Circle creation? Did its design symbolism reflect a solar theme; the act of offering a Medicine bag and a specific Crop Circle symbol to the Sun and God, with Silbury Hill (that 'great and high mountain'), in view nearby? Did it represent the 'spotlight' of human consciousness reflected back, the physical and spiritual focus of an individual's Consciousness (my own) supported by the combined attention of six participants? Was it a successful Crop Circle Co-creation experiment, the *first* time an experiment of this kind has been independently witnessed and *filmed* before a non-manmade Crop Circle response to it has appeared on the land? Did it affirm the Co-creative role that Human Consciousness - and the Sun - plays in non-manmade Crop Circle creation? Was it another example of 'direct' interaction with the Source of most non-manmade crop Circle creation and a continuation of the fulfilment of biblical prophecy, stated in the most succinct way, through literal and metaphorical symbolism? I think so.

© 2001, Ed Sherwood/Millennium Research. All rights reserved. (This article is excerpted from a book in progress planned for publication in autumn 2002.)

References:

- 1) *Crop Circle Field Report 2001 Highlights* - Ed Sherwood <http://www.cropcircleanswers.com/crop_circle_field_report_2001_highlights.htm>
- 2) *The World Is Nine: Crop Circle Metaphors of 1997* (Part 1) - Ed Sherwood, Millennium Research, June 1998. This article was published in the CCCS quarterly journal "The Circular", Issue #32, September 1998.
- 3) *The Holy Bible*, King James version, Ivy Books.
- 4) *The Scorpius Hour of 1994* - Kris Sherwood, Millennium Research, April 1997. <<http://www.cropcircleconnector.com>> Articles
- 5) *The 1996 Laguna Canyon Crop Circle Formation* - Ed & Kris

- Sherwood, Millennium research, April 1996.
 <<http://www.cropcircleanswers.com>> Articles
- 6) *Let Us Remember Dragons: A Metaphorical Connection in Crop Circles* - Ed Sherwood, Millennium Research, June 1997.
 <<http://www.cropcircleanswers.com>> Articles
- 7) *The Philosopher's Stone: A Stone Most Precious* - Kris Sherwood, Millennium research, May 1999
 <<http://www.cropcircleanswers.com>> Articles
- 8) *Eyewitness Report of Light Beams Creating Crop Formation in Holland* - Nancy Talbot, © 2001
 <<http://www.geocities.com/cropcirclecanada/ntcircle01.html>>
- 9) *A Synopsis of How the CSETI Logo Came To Be*
 <<http://www.cropcircles.org/!CSETI.HTM>>
- 10) *The Cambridge Crop Circles: What Do They Mean?* - Paul Newman, October 2001
 <<http://www.cam.net.uk/home/nimmann/events/gogmagog.htm>>
- 11) *Gog Magog Crop Circle Formation Report* 11th. July 2001 at:
 <<http://www.cropcircleconnector.com/2001/GogMagogHills/GogMagogHills2001a.html>>
- 12) *Hilmarton Crop Circle Formation Report* 22nd. July at:
 <<http://www.cropcircleconnector.com/2001Witcomb/Witcomb2001a.html>>
- 13) *David Kingston's 'X-Project' Results* at:
 <<http://thecropcirclewebsite.50megs.com/page24.htm>>
- 14) *Reconstruction of the 2001 Gog Magog Hills (2) Formation* at:
 <<http://www.cropcircleconnector.com/2001/GogMagogHills2/gogmagog22001reconstruction.html>>
- 15) *Huish Crop Circle Formation report* 14th. August 2001 at:
 <<http://cropcircleconnector.com/2001/Huish/Huish2001a.html>>

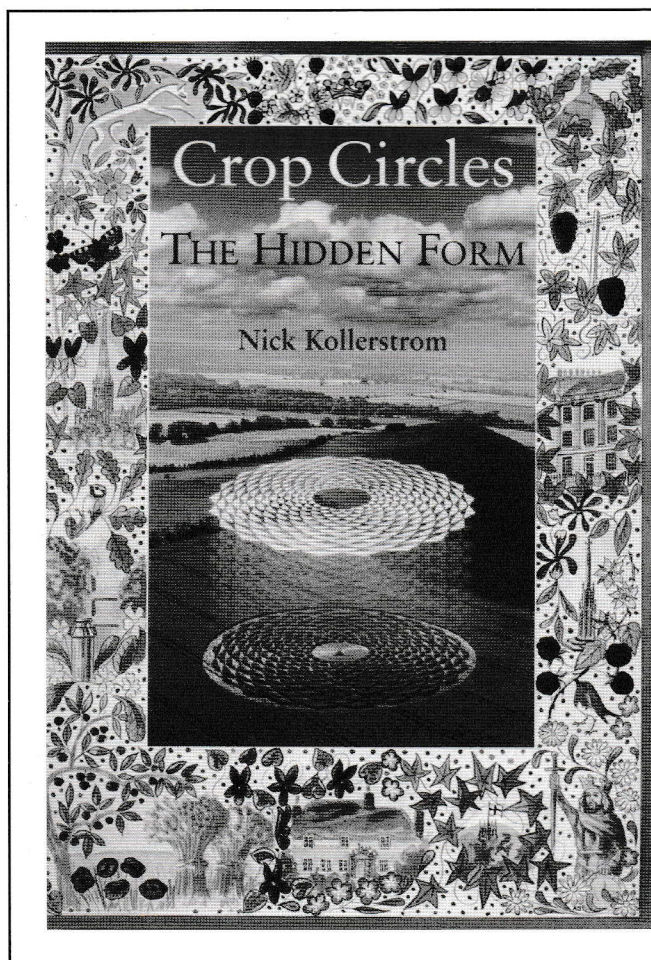
- 16) *The Sophistication of Agriglyph Geometry* - John Martineau, Wooden Books, 1993. <<http://www.walkerbooks.com/nonfiction/books/series/woodenbooks/>>
- 17) *The Archetypal Mandala of the Star of David* - Margaret Starbird
 <<http://www.gaiamind.com/starbird.html>>
- 18) *The Briefing for the Landing on Planet Earth* - Stuart Holroyd, Corgi 1979.
- 19) *The Only Planet of Choice* - Phyllis V. Schlemmer, Gateway Books 1994.
 <<http://www.theonlyplanetofchoice.com/>>
- 20) *Cymatics: The Science of the Future?* - Peter Petterson
 <<http://www.mysticalsun.com/cymatics.html>>

Future research:

More of Ed & Kris Sherwood's combined Crop Circle and related phenomena research can be found at:

- <<http://www.cropcircleanswers.com>>
- <<http://www.cropcircleconnector.com/Millennium/millennium.html>>
- <<http://www.cropclersearch.com/millennium/index.html>>
- <<http://www.rense.com/1.imagesC/orbsnlums.htm>>
- <<http://www.earthfiles.com/earth162.htm>>

Mailing address: Ed & Kris Sherwood, Millennium Research, P.O. Box 2084, Santa Monica, CA 90406, USA
 e-mail: millennium9@earthlink.net



Published by
WESSEX BOOKS
 2 Station Cottages
 Newton Toney
 Salisbury
 Wilts. SP4 0HD

Tel/Fax: 01980-629349
www.wessexbooks.co.uk
 e-mail: info@wessexbooks.co.uk

Nick Kollerstrom, MA Cantab and FRAS, has written several books and is a well-known contributor to crop circle journals. He has worked as a school mathematics teacher in Surrey for some years and presently holds a research fellowship at London University.

"I cannot think of a more inspirational way of awakening interest in geometry and how it affects us, than to have the exquisite forms behind the crop circle phenomenon placed before us, as the author has done in this book.

The Hidden Form shows a new way of experiencing the crop circle mystery, and it also gives us insights into structures of the natural world. A kind of hidden language is being revealed that the universe seems to be showing us, but it is a language which cannot easily be expressed in words.

This book does a magnificent job in opening a door on to an exciting and magical realm." *Colin Andrews*

THE PAST AND THE FUTURE

Martin Newman on repairing the gap in our knowledge.

IN OVER TEN years of crop circle and earth energy research, I only know of four people in the scientific world you could say believe in the possibility of crop circles. They might say so in a very quiet way so as not to rock the boat - because it does not pay to be seen working with crop circles. They may hint that many other places contain forces we know nothing of, but they work under duress that controls how much they can come out and say. Mention spiritual forces of this planet and those four people shrink down to one person; spiritual forces are a real 'no-go' where science is mentioned in the same breath.

Not many people are able to grasp the view that these forces could just exist with what's known of the cosmos and the world around us. It's very hard to explain to people educated at this or that University, that forces exist outside the realms of known planetary power and physics. The knowledge of the best professors on scientific and physical forces does not go far enough. Ancient man knew of this planetary power, and that other forces exist outside those limits. We have a gap in our knowledge of the planet and the cosmos, and it's one that will take some time to repair. You only have to look at the many cases of terminally ill patients recovering from illness, after being told to go home and die. Forces exist which we know little of and have lost the understanding of. Faith, and the power of the mind, is something people are just starting to understand can work miracles. Some doctors are now looking for that magic bullet to remove the tumour or cancerous growth in their patient. If you sit down and look for logical explanations you will not find them. I believe someone or something can pick up our thoughts, and act on them. It's the only answer. Either that or we truly can heal ourselves given the desire and the will to do it. (Never undertake to heal yourself alone: visit the doctor always, unless you can already move objects with the power of the mind around the room for fun.)

When you know the "wonder" that is going on around us each day, it's no great jump to know some far-advanced people from space have already visited. They live in the region of the M13 cluster and sent us people of Earth a crop circle message last summer at Chilbolton. "Oh yes!" I hear the cry. "Pull the other one!" But it happened. Forget the distance involved and the fact we cannot go there yet. They came here, folks. The good people at the Arecibo radio dish are waiting for a reply, from the message that they sent some years ago out into space. Well, it's arrived, folks, but not in the manner they thought it would come. How many people at Arecibo, I wonder, will consider a crop circle in a field a reply. Along with the "people" they're looking a little like the "greys" we know so well from the UFO magazines we read. This summer we may well have other messages from these people. They leave a distinct signature that no hoaxer can copy, so what might come for us all, God only knows. Look up in the sky any dark night to view the thousands of lights in that black void: we could be getting a message this summer from one of those little spots of light. We truly are not "alone". You need a very closed mind to imagine we are the only folks to exist here on this planet Earth. Life as we know it or in other forms must exist all over the place; not close, you understand, or we should be able to see them from where we live. But then again, perhaps not. Unseen planets might abound made from the "Dark Matter" we now know exists all over the Universe. Is this matter expelled from "Black Holes", perhaps. Questions and more questions.

Just imagine that the "people" who come here from other planets have not seen or had crop circles where they live. The huge designs must stop them in their tracks and I am sure they will have equipment that can pick up the natural earth forces of the planet in the "better" formations. So they know which ones are real and would be moved by such an exciting phenomenon. I feel sure they would visit in the wee small hours of the morning to examine the crop circles at close quarters. Any research team from another world would record and examine any strange or new feature they found - just the same as we would when we finally step out into deep space and visit other worlds. I have seen strange things late at night at new crop circle sites, Husbands Bosworth, Leicestershire, being one place where the hairs on my neck stood upright for some time, I can tell you. Spacecraft move low in the fields close to new formations during the day, which must mean they have little time to hang around till dark to examine this new phenomenon. Perhaps spacecraft need to park on the dark side of the planet during the day, to avoid radiation from the sun; it must be a problem for them, to shelter behind the tree like us during the rain storm, so to speak. Scientific people tell us aliens cannot exist, and could never reach us from their planets, so what scared the hell out of me many times past in the sky - imagination?

Good hunting to all the folks who follow crop circles. I hope this summer brings yet another fine show of huge formations. Remember to photo all the ones you find and report them to the CCCS. We see on the Web now many good circles appearing in such places as Holland, Canada and Germany: all over the planet, and that's how it should be. Share your good fortune with others and let the strong vibes reach people of all faiths and cultures. Let the bells ring out and know someone special watches over us all. Where you find people who share a delight with visiting crop circles, you find the phenomenon will respond and put one close to them. I feel sure about this, friends. Find the time to visit places close to home, a quiet field where things feel welcome and right. Many times people have said how they wished for a circle to form near their homes in a place that "felt right" and before long one came. Pick out a spot in a field where crops grow. Even grass that is not cropped close can produce nice formations and hedges where tall weeds grow is another place circles can come. I have seen them form alongside the busy A45 road near my home on the motorway embankment and I hear they even form in trees.

Walking my son's dog some mornings I have noticed the dog approach this same patch of broken hedge on the estate, where he crouches down to sniff and move forwards very warily at this point. The penny has only just dropped after a number of times of this happening. The position of the hedge gap and the dog being wary of approaching this position is because it's a place where strong leys pass. Somehow the dog can pick up these natural earth forces before he reaches this position, almost always approaching as if something is waiting to strike here. The proof of the pudding, apart from dowsing the leys, is that the hedge here will not grow the planted bushes either side of this position. It has new Broom bushes that seem not to be affected by the power passing through. Places where crop circles are in the fields sometimes show this hedge burning phenomenon East, West, North or South of a circle's position, just where the natural earth forces of the planet pass through to power the nodal points at the immediate, or intermediate, points of the compass.

The Spring Equinox is when the power of the planet undergoes great changes, just the same as the later Equinox in the year. Ley lines that show strong masculine influence become female for this period and vice versa with the normal female leys. The directional force reverses, passing weak power from the planet in the other direction. All manner of things change during this four-day period after the Equinox. Then almost overnight the situation gets back to how it was just a few days previous, with ley lines pulsing power in the usual direction and with the correct male/female influence. Just what causes this strange situation, I have no idea. It cannot be something to do with the cosmos, since the Equinoxes occur in different parts of the Universe every year. So it must be some unseen influence close to the planet that makes the changes at this same time each year, perhaps a parallel Planet Earth, unseen, passing between us and the Sun. With the new "Dark Matter" which science tells us fills the Universe along with the worlds we can see, this might just be the answer to our Equinox changes twice a year.

So just what is the hole doing down the middle of Silbury Hill? From what I have seen it's a very big animal or spirit, who is going to climb out. I would love to know if this hole is natural, or has some disturbed spirit now taken to leaving its slumber to walk the fields each night? No doubt at all the hill is all-powerful and dominates the entire area around. Its influence extends right across the country - and the planet, for that matter. If you have time, I can think of no place better to spend it than here. It draws all known and some unknown phenomena to this position. Whatever you study, Silbury Hill is the place to find answers. To be honest, I think people would find more questions than answers: Silbury Hill is that sort of place. Yes, you can pursue science just that much further here than anywhere else. The natural power here is not static and level. One day, you could manage to spend hours close to the hill. Yet another day, if you walk down the south/east corner, your head feels like it's busting open. In the summer all forces rise to a level where I think it can be dangerous to climb the hill at night and skywatch from here, but that's just my own opinion, folks. Remember the thought: if you feel ill in a circle or ancient site, just walk to the edge of its design or structure. The natural forces extend at full power to the edge: past the design shape, you can handle what lies outside well enough. Any genuine crop circle is a mass of natural earth forces, sited right on the formation, so many things are in harmony here as you expect in nature. The balances of the forces are such that sometimes where a strong male formation has gone down, women entering the circle will be affected in all kinds of ways. Any woman pregnant should avoid these strong masculine places. I believe it can harm your baby. In the same way, any strong female crop circle can affect men who walk in its design. Some formations do have a gender that can upset the balance and harmony of the body while others seem to be a mixture of both male and female forces, which blend and somehow allow us to walk in their designs. There we can absorb the exciting earth forces and soak up the atmosphere and be with like-minded people in a happy atmosphere.

Something new on the scene is where a Maze has been cut in Wales and is now drawing in ley lines and water lines and different sorts of physisic power. I have never visited this place or other such places but may I offer a word of warning. The cycle of ley lines across the planet increases and decreases in a four-year cycle. So a place like a Maze could be built and not contain very much in the way of natural earth power, yet within a couple of years it might show some interesting leys passing through the site and it might appear to people that the site has drawn the earth forces down. Without pouring water on the fact, this might have happened. I should record things at each

place over the four-year cycle to see just what is happening during this period. Watch for this increase and decrease to the site of natural power and water lines: it could be a natural occurrence and not something promoted by the Maze design or shape. I do believe some geometric shapes and designs can and do promote earth forces to be drawn in where these designs are sited. Look at the many cathedrals across the world that have at their centre some long ancient Maze within the building. These places are "alive" because of it. I have no doubt of that. Good luck to people who try this - and I would like to hear from anyone who has some interesting stories to tell of changes that occur. To learn of our past knowledge lost, we have to experiment again and see where it leads. The Rollright Stones and a circle of stones nearby at Whichford (which I helped build), both today show a 50% increase in the number of leys passing through those sites. We are in an increase situation at the moment regarding ley lines across the planet, so these paths will spread all over and pulse natural earth force all around in every direction.

A remarkable book everyone should read or look at is "Mosaic and Tessellated Patterns" by John Wilson, if only for the reason that a number of the drawings in the book appeared two years ago in the UK as crop circles. For the record, I don't believe any of the formations from the book were hoaxed into the fields, but appeared very naturally, which beggars belief, I know. Somehow this gentleman managed to tap into the natural geometric laws that govern what shape and design crop circles will be produced in the fields, be this harmonic or geometrically induced shapes. I found not just the designs that appeared, but many other shapes in the book capable of appearing as well, which makes these designs all the more remarkable. John produced this book some time ago and the designs he covered only first appeared two years after that, so it remains to see what else may come from his book to grace our fields. Two designs that blew the croppie world apart were the Woodborough Hill and Avebury Trusloe formations two years ago. These formations were very powerful in the fields and were included in John's book. Explain that if you can. I dowsed the Avebury Trusloe formation "genuine" and found it dowsing blindfolded, travelling from Birmingham after the summer, so I have no doubt it was the "real thing".

A link must exist with what John produced in his book and the natural law that dictates what design comes in crop circles. So find that link and you are well on the way to knowing how crop circles form. Something strange like this has happened before: a huge crop circle formed near Welford on Avon and an artist had drawn the shape and design out five years previously. Natives of Australia used almost the same design for countless years in a game played by the tribes - a sort of "Snakes and Ladders", outback style, if you can imagine that.

I mentioned last summer that Eltjo Haselhoff found a mouse that got at his crop circle samples, but would not touch those from a circle - only the controls. I fed samples to mice last year: they would not eat the samples taken from what I thought to be a genuine crop circle, because of the strong dowsed earth force contained in the samples. What I need are mice to which I can offer both control and "zapped" seed samples to from a number of formations. I am not very well aware of the habits of mice and their eating times; perhaps someone with pet mice could try this at home and report back. Do we have some nice children who have mice as pets and an understanding mum and dad who read this magazine? I am sure the Editor would offer a huge reward for any details gained from this experiment in the interests of science - say, £1 perhaps, knowing John!

ADAM AND EVE AND BIG DISBELIEF IN GOD (AGAIN)

2002 Updates - Crop Circles Deciphered. Comments on the first 2002 UK formation - Neil Olsen.

THE 2002 UK crop circle season was off to the slowest start ever (wet weather?) but after a few small rapeseed formations (mostly hoaxes) the Avebury Trusloe area near Beckhampton, Wiltshire was blessed on 2nd. June 2002 with a 250-foot formation in young barley. It was located adjacent to a field home to two large neolithic boulders known as "Adam and Eve" (Fig. 1).



This formation had 3 (= God) rings, 6 (= man) equilateral triangles (symbolising God, man and the land) and 39 small circles with centre tufts on the outside ring (Fig. 2).

In spite of repeated warnings by prophet after prophet (4 major prophets and 12 minor prophets), the 39 books of the Old Testament are full of tragic stories of God's chosen people and their idolatry/disbelief in God causing failure after failure in personal and national fulfilments.

Big Disbelief in God Message Again

Biblical numerical gematria message of the Adam and Eve formation: the fall of man (6) through disobedience as typified by Adam and Eve was caused by their disbelief in God (13) x the triune God, 3, the multiplier (Deut. 8: 11-13) = big disbelief in God (3 x 13 = 39).



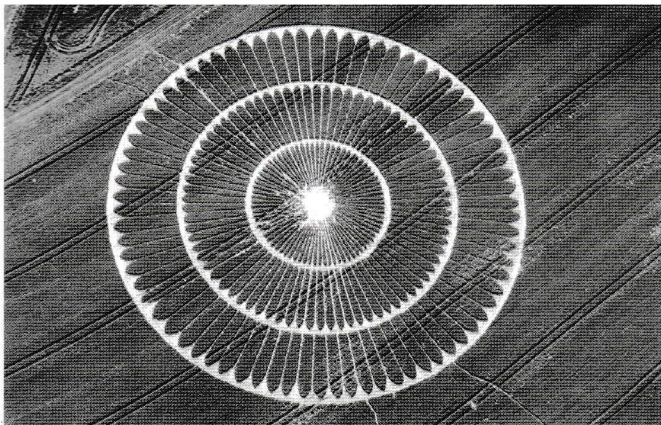
This follows the 'big disbelief in God' gematria numerical message of last year's all-time "mother of all crop circles" of 409 circles (= Psalm 23: "The Lord is my shepherd" Psalm; God, the multiplier, Psalm 23 x 23 = 409) at the Milk Hill White Horse (of Rev. 19: 11) chalk hill monument that had 6 (= man) ram's horn-shofars (= "Wake up" warning) arms of 13 big circles each (big circles = big disbelief). This '13 = big disbelief in God' message also appeared in the all-time biggest and best Star of David at the Milk Hill White Horse on 8th. August 1997. It had 13 Stars of David in one.

Given 1997's 13 Stars of David in one glyph and 2001's shofar of 'big disbelief in God' in the gematria messages at Milk Hill (i.e. *twice*), the modern day 'big disbelief in God' popular parallel persuasions in our culture, the 39 books in the Old Testament beginning with the Adam and Eve story in Chapter 2 and the proximity of the formation to the *two* Neolithic boulders named Adam and Eve, this formation was an appropriate *beginning* for the 2002 season. Note 2002: the number 2 = 'the freedom of choice between good and bad' in Biblical gematria numerics and the freedom of choice being the prime Spiritual Directive in our dimension (the fourth dimension, i.e. the three spatial dimensions of length, width and depth plus time, 3 + 1 = 4, 2 x 2 = 4). Once again, the choice between good and bad (2) is upon us.

To order your signed copy of *Crop Circles Deciphered*, 120 pages incl. all updates, 119 graphic illustrations, 63 photos, send £10 = £2 s/h or \$18 US + \$3 s/h (add £1 or \$2 US for airmail); bank drafts (preferred), or VISA/MC/exp. date to:
Sovot Unlimited, 3451 Highway 101, RR 22, Roberts Creek, B.C. Canada V0N 2W2.
sovot@sunshine.net
<http://www.sunshine.net/www/800/sn/0896/crop.htm>

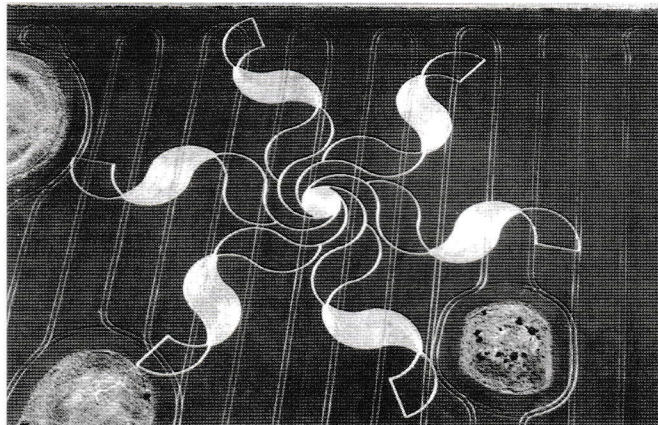
(Visit <<http://www.temporarytemples.co.uk>> for articles by Karen Douglas, Steve Alexander's photos and other books.)

PHOTO GALLERY



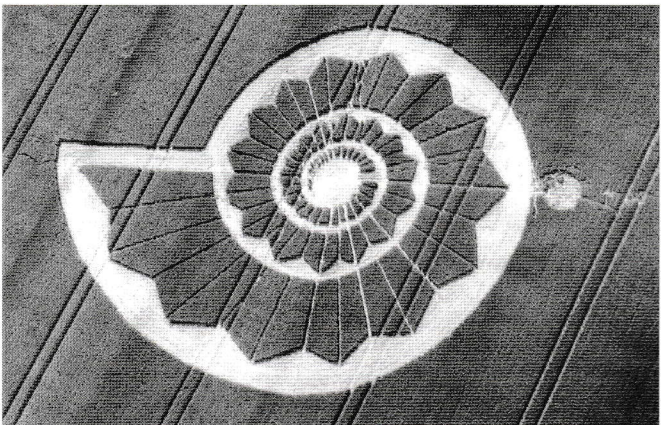
Cherhill Down, Wilts.

(Lucy Pringle)



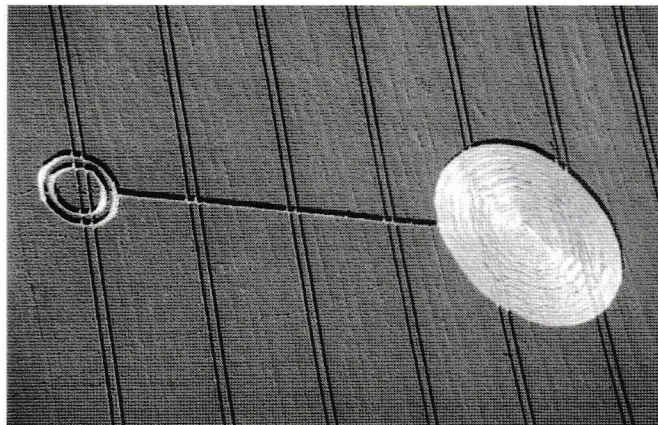
Stonehenge, Wilts.

(Lucy Pringle)



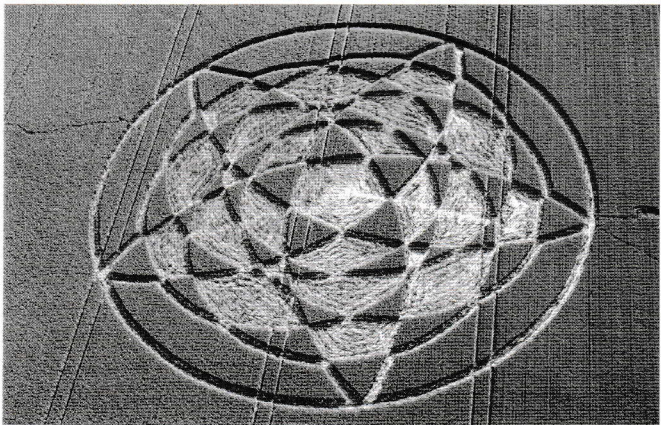
Pewsey, Wilts.

(Lucy Pringle)



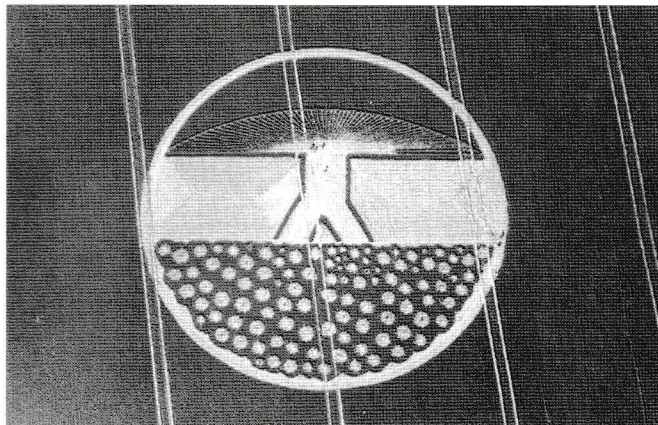
Bishops Cannings, Wilts.

(Lucy Pringle)



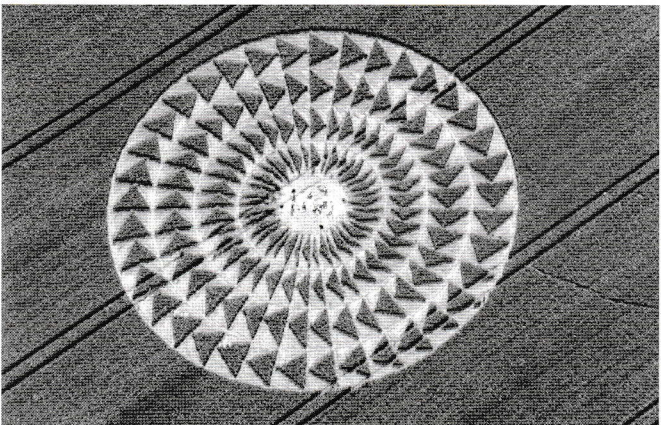
Avebury, Wilts.

(Steve Alexander)



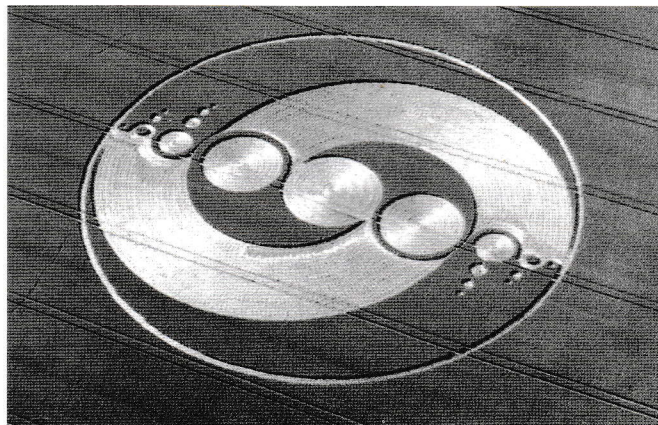
Alton Barnes, Wilts.

(Lucy Pringle)



Windmill Hill, Wilts.

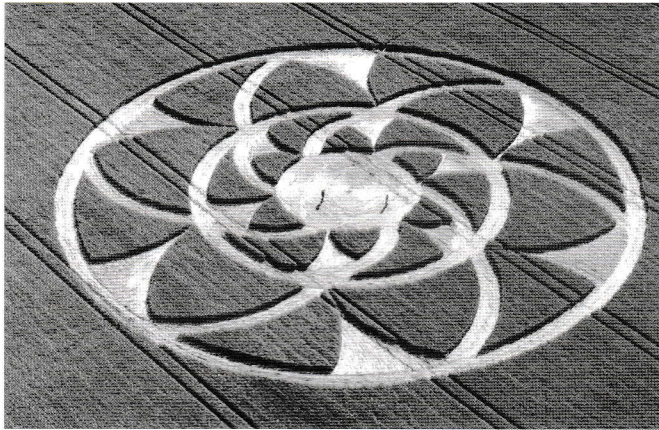
(Lucy Pringle)



Avebury, Wilts.

(Lucy Pringle)

2002 (Part One)



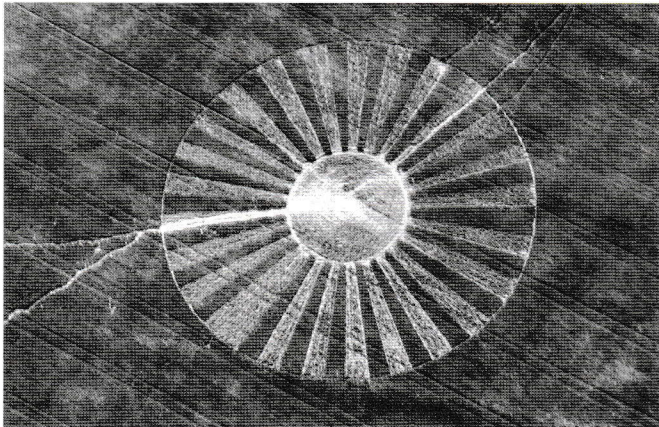
Barbury Castle, Wilts.

(Lucy Pringle)



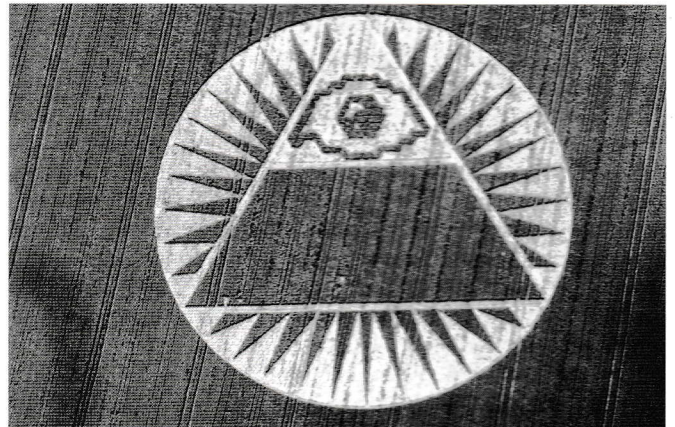
West Overton, Wilts.

(Steve Alexander)



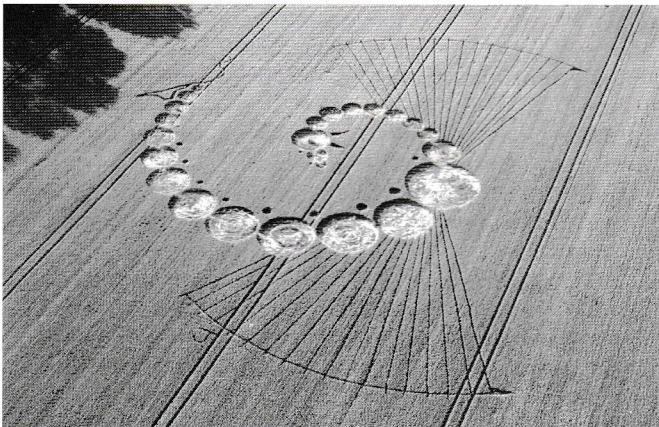
Avebury, Wilts.

(Lucy Pringle)



Highclere, Hants.

(Lucy Pringle)



Uffington White Horse, Oxon

(Steve Alexander)



Silbury Hill, Wilts.

(Steve Alexander)



Etchilhampton, Wilts.

(Lucy Pringle)



Longwood Warren, Hants.

(Lucy Pringle)

CROP CIRCLE EMPOWERMENT - THE COST OF DECEPTION

Synthia Andrews takes an alternative look at the human component in circle-making.

THERE IS AN incredible story to be told about the crop circles of England and it is not the one on which most people are focused. It is the story of the spiritual potential of humans: the potential we have to interact with the living force of nature through intuition and geometry to create energetically significant, consciousness-shifting tools. Surprisingly, the majority of crop circle enthusiasts overlook this truth in the belief that only a "mysterious force" or "alien intelligence" can be the creator of this phenomenon. It may be that a mysterious force or alien intelligence is indeed involved but certainly people are as well. It is interesting that the circles are perceived as valuable only if they are made by a non-human source. It is as if we are afraid to be powerful, co-creative, spiritual beings.

Background

In July 1999 my husband, Colin Andrews, announced to BBC News the results of his two-year study into human hoaxing of crop circles. His research indicated that during *the two years of his study* at least 80% of the crop circles he researched were man-made. This announcement stunned the crop circle community, largely because Colin was one of the original crop circle researchers and has been the subject's primary proponent for the last two decades. He started the first research organisation, Circles Phenomenon Research (CPR) and has amassed the largest database in the world on the subject. He was in a unique position to evaluate the presently occurring formations against the earlier phenomenon.

The announcement resulted in immediate warfare within the established crop circle research community. Prominent alternative magazines that purported to deal in truth refused to print his statement. Fellow researchers refuted his report with character assassination rather than with facts. Interestingly, only a handful of people (all scientists) paid attention to the rest of his statement - that approximately 20% of the circles studied showed no evidence of being man-made and that many of these demonstrated a unique magnetic signature. While Colin continues to work with scientists on the magnetic results, as an intuitive energy healer, I find an equally compelling mystery lies with the man-made formations.

To review the historical and experiential record on crop circles:

- The first published report of a mysterious circle appearing in a wheat field occurred in 1678. Orange balls of light were witnessed in the sky at the time the circle appeared.
- The CPR Database contains firsthand reports from farmers of crop circles occurring as early as the 1920s, in many of the same fields in which they appear today (CPR Database Ref. #22-001).
- Originally, the formations were simple circles that evolved into ringed circles and circles with satellites.
- The simple formations further evolved during the 1990s into complex patterns.
- The majority of circles have occurred around ancient sacred sites such as Stonehenge, Avebury and various other megalithic complexes. The folklore about these sites includes

the same type of experiences reported in relation to crop circles.

- People entering crop circles experience a sense of spiritual awe.
- The phenomenon occurs worldwide.
- Many formations display complex geometries and/or diatonic (musical) ratios between component parts.
- There is an association of crop circles with underground water systems; sometimes the formations align with watersheds, sometimes with underground waterways or even cattle troughs. The underground water features are detectable from the air but not from ground level.
- Magnetic distortions have occurred inside formations, affecting compasses and electrical equipment. Current research is focusing on magnetometer surveys.
- A high-pitched, two-toned electromagnetic sound has been heard by multiple witnesses on different occasions and has been recorded on two occasions. A BBC television crew made one recording and the effect of the sound damaged their electronic equipment. A later broadcast of the sound also damaged broadcasting equipment (CPR Database Ref. #89-045).
- Some people visiting the circles experience physiological effects including heightened awareness, feeling subtle energies, headaches and a profound sense of peace. CPR research conducted with scientist Masahiro Kahata into brain wave patterns indicates that brain waves are affected by proximity to crop circles (CPR Database Ref. #93-029, 073, 079, 080).
- Spontaneous healings have allegedly occurred inside crop circles. The use of crop circle photographs as healing tools is practised at the Institute for Resonant Therapy in Germany and with individual Radionics and energy practitioners, myself included.
- Researchers have found cellular changes in plants associated with crop circles.
- Unidentified balls of light have been seen and filmed in and around the formations, as well as in and around megalithic sacred sites.
- The patterns are hauntingly familiar and resemble symbols from indigenous cultures. Seeing the patterns for the first time often has an emotional effect on the viewer.
- The formations contain dowsable energy and energy-sensitive individuals, such as Chi Gung master Nan Lu, can apparently locate the formations by feeling for the energy with their hand (American Taoist Healing Centre, New York).
- The formations usually occur in relation to established lines of earth energy known as ley lines.
- The phenomenon is interactive. Patterns have appeared in the fields after people have visualised or requested them to appear. Researchers have often noticed that after they consistently observed a feature and then formulated a hypothesis around it, the next formation would break the rule they had just established.
- When Pat Delgado and Colin made the phenomenon public in 1989 with the publication of *Circular Evidence* (Bloomsbury Press), more and more people were drawn to the fields, some to visit the mysterious markings and others to take up the challenge of making them.
- Most amazingly, as people have consciously begun to make more of the formations, the anomalies and energy effects

surrounding the formations continue to occur, even with known hoaxes, seemingly regardless of the source of the formation.

It is the anomalies that keep people faithful to the idea of either a supernatural force or aliens as the creator of the circles. The term "supernatural", however, merely refers to a natural force that we do not yet understand. When you have stood in a field and watched balls of light move around a crop pattern, it is hard to believe that the circle was man-made. However, there are substantial reports of these same anomalies occurring in man-made circles. The apparent irreconcilability of these facts is the foundation of the controversy. It may be time to revise our theories and expand our understanding.

A Theory of Energy

Humans have been making patterns and geometric structures to shift consciousness and move energy for thousands of years. Zuni sand paintings, Tibetan yantras, and Indian mandalas are a few examples of geometric patterns used in this way. The most extravagant examples of energy-shifting geometric tools may be Stonehenge in England and the Great Pyramids in Egypt. It is noteworthy that Old English folklore establishes Stonehenge and other stone circles as sites of spontaneous healing, observation points for strange lights and places where lightning seems to gravitate (Paul Devereux: *Secrets of Ancient and Sacred Places*, p.24, Cassell Publications, 1995). The original discoverer of ley lines, Alfred Watkins, author of *The Old Straight Track* (1925, Garnstone Press, republication 1970), believed that Stonehenge and other megalithic monuments are linked together via energy pathways. The relationship of ancient sacred sites to underground waterways is also well established. Additionally, the Great Pyramid's energy effects, particularly those on physiology, have been the focus of much study (Serge Kahili King: *Earth Energies*, chapter 5, Theosophical Publishing House, 1992). What all of these ancient monuments have in common is that they use sacred geometry to constrain and direct subtle energy for a specific effect.

Paul Devereux writes in *Secrets of Ancient and Sacred Places*, "Sacred geometry is the geometry inherent in all nature, whether it be the energy dance of atoms and molecules, the formation of a crystal, the growth of a plant or human skeleton, the motion of weather systems or galaxies. Certain patterns and ratios are used by nature in the formation of the manifest universe: the process of becoming is governed by the implied geometry. Such geometry is used in magical invocation for the same reasons. The builders of the ancient sacred monuments observed the ways of nature closely and encoded its architecture into their structures so that the holy places would act as microcosms of the whole universe." (p.22). Can it be that crop circles, in utilising sacred geometry at energy centres, activate a heretofore unmeasured energy inherent in nature?

John Michell writes in his book *The New View Over Atlantis* (Harper & Row, San Fransisco, 1986), "From the relics of the Stone-age science practised by the adepts of the ancient world it appears: first, that they recognised the existence of natural forces of whose potential we are now ignorant, and learnt to manipulate them; second, that they gained thereby certain insights into fundamental questions of philosophy, the nature of the universe and the relationship between life and death" (p.197). He continues: "The work of scientists such as Baron C. von Reichenbach and Dr. Wilhelm Reich further confirms the possibility, indicated in folklore all over the world, that some form of natural energy was known in prehistoric times and that a method was discovered, involving a fusion of the

terrestrial spirit with the solar spark, by which this energy could be disposed to human benefit."

Is it possible that in making crop circles today, as in ancient times, humans are the "terrestrial spirit" fusing with the "solar spark", thereby activating a powerful force of nature?

Essentially, I am suggesting that what we think of as causes are really effects. When biologists see cellular changes in plants within formations, the popular conclusion is that a powerful force must have been engaged to create the circle. But what if it is the reverse? What if a powerful force was released as the result of creating the circle?

The evidence shows that ancient sacred sites are aligned to unseen underground waterways and ley lines. It is believed this system was part of a subtle energy matrix the sites were activating and releasing for human use. Researchers have noted the same correlations and similar effects with crop circles. It is assumed that ancient people had the sensitivity and awareness to find these waterways and forces, a practice now called dowsing. Although crop circle enthusiasts don't want to admit that hoaxers may have dowsing abilities, the possibility must at least be considered. It is interesting to note that both crop circles and sacred sites are associated with reports of strange lights in the sky and UFO activity. Do they come because they are drawn to the earth energy being activated? Are the objects that have been filmed in crop circles making the circles, exploring them, or utilising their energy?

We live in a unique time in history during which the arcane knowledge and mythology of the past are fusing with the science of the present. Nowhere is this more in evidence than in the field of medicine. Modern medicine is open in a way it has never been before to alternative and complementary theories based on subtle energy. Some of these healing modalities, such as Radionics and Reiki, create patterns and symbols that establish precise frequencies and induce specific healing effects. Healing frequencies are used to shift mind and/or matter. Sound waves create frequency patterns by vibrating particles into specific geometries (*Cymatics*, a film by Dr. Hans Jennings, 1986, MACROmedia). Some researchers have speculated that sound waves may have vibrated crops into geometric patterns, thereby creating crop circles. Isn't it equally possible that the creation of a living geometry generates a frequency that produces the energy effects associated with crop circles?

Another piece in the puzzle may be seen in the work of nature energy pioneers such as the founders of Findhorn in Scotland and Perelandra in the United States. Michelle Small Wright, founder of Perelandra, has documented in her books the process of what she calls "co-creative science". In her work she communicates with nature and uses geometrical designs to create energy gardens. As at Findhorn, her gardens exceed the limits imposed by natural laws, as we know them. Forty-pound cabbages grown in the barren rock of northern Scotland would be unbelievable, if not seen. Wright describes this ability to transcend natural limits as the spiritual growth of humans joining with nature to become co-creators of the world around us. In fact, we already *are* co-creators of the world around us; we simply do it without consciousness or intention - hence the chaos of modern times. We may be called to return to ancient ways and be co-creative as a matter of choice, not default, and with conscious intent. Perhaps crop circles are a step in this direction.

This theory is already being tested in California by Mr. Bill Witherspoon, who is making patterns in the landscape with the intention of changing the field of consciousness. Wouldn't it be wonderful if people in all walks of life and places on the earth began to consciously use geometry and natural energy in their gardens, landscapes, homes, offices and communities?

Is this simply a return to the Chinese practice of *feng shui*?

The Cost of Deception

Why some researchers and hoaxers alike want to obscure the truth of the man-made formations is interesting. Despite the hate mail and raging controversy over Colin's disclosure, most crop circle researchers have already known that humans are constructing circles. It was five years ago, in 1997, that Colin first began his in-depth investigation into man-made formations. He hired a detective to track hoaxers and create a profile of man-made circles. At this time farmers were losing patience with the hoards of people trampling on their fields whenever a formation appeared. To elicit their cooperation in this study, Colin agreed to provide the farmers with details of any known circle-making activity that occurred on their land. We expected support from the crop circle research community in our efforts to reduce man-made activity but, much to our surprise, this created an angry furore.

In August of 1998, Colin and I attended a gathering of several researchers at a seaside restaurant in Southsea, Portsmouth. During the discussion one couple began to explain why they believed it was a poor decision on Colin's part to expose the hoaxers. They explained their thoughts on the value of hoaxing by describing the experience they had had while constructing a circle for research purposes several years earlier (T363, 26th.-27th. June 1995, in West Stowell, Wiltshire). Their description included how beautiful it was to be out in the quiet of the night, joining nature and in harmony with the sacred landscape as they created a magical formation. They went on to suggest that exposing people for their role in creating these sacred formations was misguided. I actually agree with their assessment of the value of man-made circles. But why keep the method of creation a secret? If hoaxed formations are a valuable asset, why not show everyone how creating a sacred geometry in nature can create a sacred space and be a tool of empowerment?

Other circle makers describe experiences similar to the above. In October of 1996 Colin and I were in Finland at a UFO convention at which Colin was speaking. Present in the audience was Robert Irving, a well-known circle maker. At some point during the proceedings, Irving introduced himself and asked to have a meeting. We agreed to meet in the conference cafeteria. The conversation was so interesting we continued it the next day in downtown Helsinki. My guess is that we spoke for ten hours. At the time, Colin was still resisting his growing alarm at the possibility that many formations were man-made and I was personally quite hostile during parts of the conversation. I must say I ended up with a great deal of respect and genuine liking for Robert Irving.

Irving had been involved in circle making since the early 1990s and was corroborative in much of his detail, confirming site information that Colin thought was known only to himself and a few fellow researchers. More interestingly, Irving discussed some personal experiences while making the circles and personal motivations as well. Many of the circle makers claim unusual experiences in the fields while making the circles. They speak of lights appearing in the fields while they are working; about designing a pattern, going into the field to make the pattern and creating an entirely different design - one with symbolic impact, or one that had been previously meditated on by individuals or groups. John Macnish, in his book *Crop Circle Apocalypse* (Circlevision Publications, 1993), writes that the first avowed circle makers, 'Doug and Dave', felt compelled "by an unknown source" to go out into the fields at night and create patterns.

Irving related an event during which he entered a pattern

the morning after he and several others had made it. A number of people were in the formation and Irving was enjoying hearing their comments and impressions. He reported witnessing a woman's swollen ankle significantly reduce in size while she was in the formation. When I asked him directly why circle makers didn't acknowledge the artwork they created, he said that for him, if people knew they were man-made, the magic results would stop happening. It seemed his opinion was that the energy effects were produced by the person's belief in the mysterious source of the circles. I disagree. I think the effects are real, palpable and part of ancient knowledge.

We live in a time when we need to become conscious; where we need, in Colin's words, "to recognise our place in the natural world" and find the tools of empowerment necessary to change the direction in which we are heading. If crop circles are part of that, it is time to stop hiding from the truth and pretending people are not a part of the magic and mystery. Aliens, or a mysterious force, may have originated them and may still make some or inspire the making of others. Maybe we are in training. The importance is that we can use geometries and natural forces to change our consciousness and, in so doing, the world in which we live.

The cost of deception, of ignoring the human component, is the loss of the opportunity for spiritual growth. We have the choice to either give our power to an outside source, or to embrace our own abilities. Let us accept our spiritual evolution and consciously begin our training in co-creative living.

REVIEWS/LETTERS

The Face & the Message: What do they mean and where are they from? An investigation by John Michell. (36 pages A-5, Gothic Image Publications, 2002, £7.95. Reviewed by Christine Rhone.)

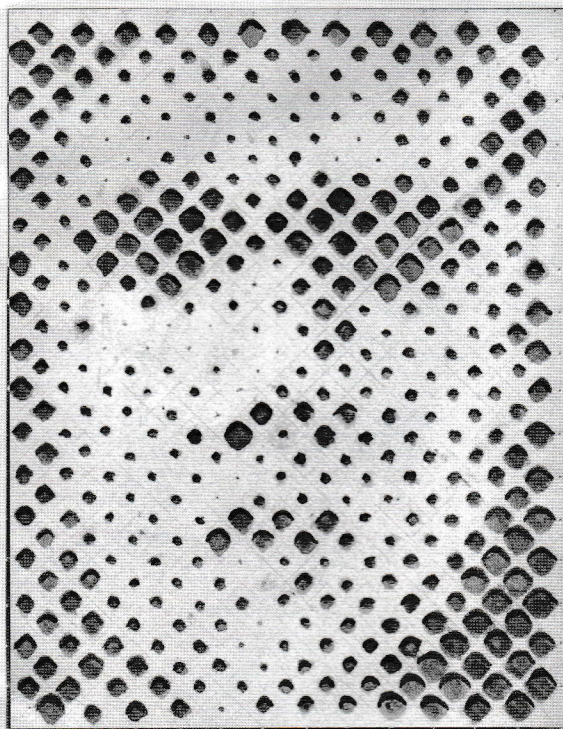
GRAND MASTER OF sacred geometry and high Platonist John Michell has come out with an elegant pamphlet on the Chilbolton Face and the Arcibo Message pictograms. He has been deeply impressed by them.

Both were found in the same wheat field in Hampshire in August 2001. At first the Face looked like nothing more than a mess. Only when its photo was developed did a huge face become visible. This displayed a new pictogram style using a pixel-like dot technique to create a light and shadow effect. The Message seems to be a reply to a coded radio message sent into outer space by SETI (Search for Extra-Terrestrial Intelligence) from the giant telescope at the Arcibo Observatory in Puerto Rico in 1974. The field where these pictograms appeared is next to the Chilbolton Observatory radio telescope, as if to emphasise their extra-terrestrial origin.

John Michell relates the discovery of the Face and the Message, the characteristics of their construction, and their stylistic precedents. He gives details of the analysis of the Message done by Paul Vigay of the Independent Research Centre for Unexplained Phenomena and explicates the nine points of difference between the message sent and the message received. Then follows a discussion of the origin and meaning of crop circles, in which JM deftly summarises the arguments for and against hoaxing, conspiracy, extra-terrestrial intelligence, and the inevitable interplay of genuine and fake data in any manifestation of mysterious phenomena. JM finds the crop circles a high-level phenomenon that is not originally man-made, one that is instructive and enlightening, comparable even to the Philosopher's Stone. He also ventures

The FACE & the MESSAGE

What do they mean and where are they from?



An investigation by JOHN MICHELL

a down-to-earth explanation for it that does not involve spirits or extra-terrestrials, but does involve a silicon-centred mentality. The pictograms could be print-outs of computer generated designs projected at a distance.

JM is the first to point out that this proposed explanation in no way covers all aspects of the crop circles, such as psychic feedback and strange sounds and lights. He falls back onto Hermes-Mercurius, the old trickster god and shape-shifter, as the main representative of the spirit powers of nature and the World Soul, who is both a revealer of mysteries and their concealer, and finds himself, and us all, in good hands. Amid all the confusion, the phenomenon maintains a perfect balance, because every explanation still remains possible. And the show goes on, marvelously.

The pamphlet, presented in the classic style of book designer Richard Adams, is printed in olive green ink on wheat coloured paper, with many photos and illustrations, including some watercolours by JM. It can be ordered directly from the author at the discount price of £6.50 including P&P. Write to John Michell, 11 Powis Gardens, London W11 1JG.

A-maizing!...

from Mick Hardy

When Dr. Eltjo Hasselhoff and a team from the Dutch Centre for Crop Circle Studies went to visit a 'scorpion' shaped formation that had appeared in Stadskanaal during early August last year an extra circle appeared although nobody saw it happen: suddenly it was there. Photographs proved that it

definitely wasn't there when they entered the field.

Similarly, a circle appeared behind a team in a massive surveillance operation called "Operation Blackbird" in the early nineties.

These and other examples seem to imply that the 'Circle Makers' appear to have a mischievous but benign sense of humour. I personally like to think of the Circle makers as Puck, or Robin Goodfellow, a concept so wonderfully depicted as "Cornelia" in Christine Rhone's cartoons.

So it was with a certain amusement and anticipation that when I opened my local paper (the "Evening News") on 19th. July and saw a big colour picture of a 'maize maze' included in a supplement about what to do with the kids during the summer holiday, I thought something might happen!

In the accompanying article the reporter wrote, "The amazing maize mazes which appear across our countryside every summer seem to be a recent addition to the landscape.

"Perhaps inspired by the mysterious crop circles of the 90s or by farmers 'keen to cash in' on their crops even before they are harvested..."

The reporter seems to think the circles were some kind of fad or fashionable activity that people happened to get up to and it's now passed on into obscurity.

Our first known Norfolk formation this year, which is the genuine article as far as I can see, appeared, according to the farmer, some time on 16th., 17th. or 18th. July - anticipating the article about maize mazes, which was published on 19th. July.

This is probably just a bit of serendipity but it makes me smile. After all, we know the Circle makers have a sense of humour and the best way to 'debunk the debunkers' is to take the p— out of them.

"The Face"

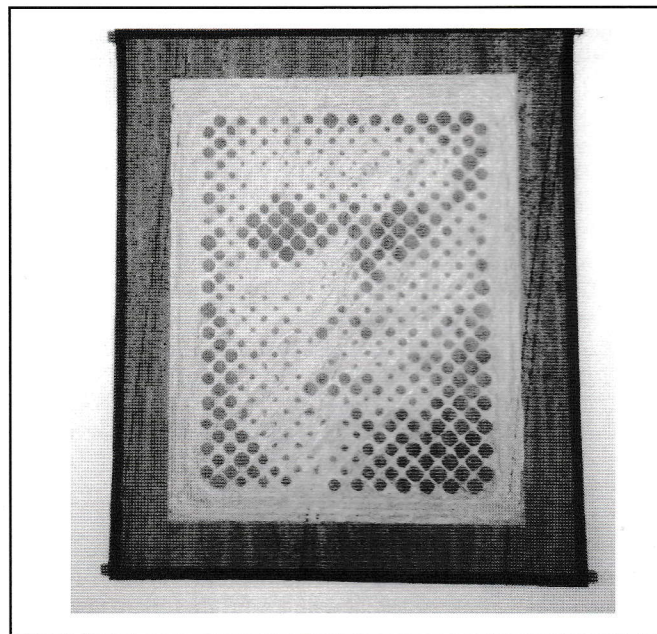
from Adriana Forbes

Please find enclosed photo of an embroidery I felt inspired to make of last year's "The Face". It measures 28" x 34".

The rectangular format and 45° grid lend themselves very well to the medium I use.

I thought you might be interested to see how the formations inspire creativity.

I wonder what this season is in the process of bringing...



A LAND OF MILK AND HONEY

Some thoughts on 'genetic modification' from *Derrick Hunt*.

YOUR STRIP CARTOONIST Helen Sanderson (issue #33) claims to be an abductee with a genetically modified bod!

"High Strangeness", Linda Moulton-Howe might say!

Having no personal experience of abduction, I find the phenomenon to be strange...peculiar...weird!

However, that is not to say I doubt the perception of abduction. Those who claim to be abductees have undoubtedly experienced the perception of being abducted, which is at least a metaphysical abduction, if not actually a physical one. Moreover, I have my own strange...peculiar...weird experience of a UFO encounter to relate.

In June 1995, lying awake one Sunday morning shortly after sunrise, which in mid-summer comes quite early at latitude 51° north, I received a telepathic communication through the crown - or what I would term "cosmic" - chakra, the message being, "Look out of the window now."

In compliance with the imperative collective thought-form request, I left my warm bed to stand before the bedroom window, looking due north across the valley of the River Quaggy towards Greenwich, whereby the Quaggy joins the Thames.

As a consequence, I saw on that early dawn morning, in cloudless blue sky to the north-west, a silver-grey coloured metal engineered 'saucer' (or 'pie in the sky') UFO. After staring at the silent, unmoving UFO through the uncurtained window for a time and beginning to feel the early morning chill wrap round my nakedness, I thought, "This is ridiculous," and returned to the warmth of my bed, having much to think about on the subject of mind and telepathy, of which this UFO sighting, after a prompting telepathic communication of "Look out of the window now," seemed to be a confirmatory proof positive of my neutrinosynthesis theory - at least to me!

Many years ago, during a spell spent working as a sugarcane cutter, I did, one night, see a curious revolving light over the Eubenagee swamp in North Queensland, Australia which was, I believe, far too high to be *will o' the wisp* or *ignis fatuus* marsh gas. However, such a light in the dark of night can be easily misunderstood. But there is no doubt in my mind that what I saw early one morning over south-east London was an alien metallic 'saucer' hovering silently above *terra firma*, in defiance of gravity as understood. Pie in the sky indeed!

In my experience, if a channelled, or telepathic, connection informs of what we are not already understanding of, it is blanked out, or staccato blurred! Make of it what you will!?

There is doubtless many a *pons asinorum* before Humankind, given they choose to ascend the ladder of evolution rather than cul-de-sac of great jeopardy descend. So doubtless there will be heartache on the way too! *C'est la vie!* We all have to make way for subsequent generations! *Joie de vivre!* Eternally recurring ITis, I believe! Plus ça change, plus c'est pariel, as Francine Blake might say!

As to having a genetically modified bod, I find that a puzzle to comprehend: every cell of the body - and there are more millions of cells than I care to count - contains the human genome. Therefore, to be fully genetically modified would require that every million of millions of cells in the body would have to be modified. Moreover, the human genome is only a small percentage part of our total DNA, much of which seems apparently to be redundant, which is something that came as a disappointing surprise to those scientists engaged in mapping the human genome, who found that there isn't that great a difference between a man and a... your choice!



However, I believe that, as stated in the Bible, we are made in the image of God. "How is that?" you may ask. Simple! Universe is the maximum number of possibilities or the totality of all things possible in extrapolation from binary base to Infinity: Eternity; which in other terms is Tao expanded to fulfilment - if you want such a thing - God. Moreover, Universe is at least ten times bigger than Big Bang thinking would have it, because in somehow mirroring the DNA in every cell of our body, the Universe is perceived by me to be formulated from clustered stellar galaxies in helical arrangement subject to gravity in motion, coiled spirally about itself, nine-tenths of which is unseen by us here located on the minuscule planet earth.

"I am so small I can barely be seen
How can this great love be inside me?"

Look at your eyes. They are small,
but they see enormous things."

Jehaluddin Rumi

According to Greek mythology, Apollo was born on the island of Delos, between an olive tree and date palm growing on Mount Cynthus, his mother Leto and sister Artemis having been pursued there by Python, sent by jealous Hera, wife of the philandering Zeus, who was father to Artemis and Apollo. In turn, pursued by a four-day-old Apollo, Python is said to have fled from Mount Parnassus to the oracle of Mother Earth at Delphi, where Apollo, daring to follow Python into the shrine, dispatched Python.

That is myth from European 'Dreamtime', one could say, because at bottom of all our dreams lies the never-dispatched, coiled, spiralling, eternal python that is DNA, the microcosmic mirror-image of Macrocosmic Universe Unbound: Unbounded - at least, that is what I believe! Thus, that which we are - namely, an aggregated mass of inherited, ancestral, cellular deoxyribonucleic acid - is made in the image of Universe: that is, God, if you want such a thing. And neutrinosynthesis reaches the parts other beers cannot reach!

What does that make me?, I question, to which the answer comes: a backward boozy dog!

Actually, when I have visited The Barge Inn I have more often than not chosen cider to drink, although that choice is not set in stone tablets but rather a glass, I would say. Usually, too, I'm driving about the corny fields so I limit myself to a single glass.

When driving from The Barge Inn at Honeystreet towards Alton Barnes, clearly visible, straight ahead of the driver, from the humped bridge over the Kennet & Avon Canal, can be seen the Milk Hill white horse, in that part of Wiltshire which is - in name at least - the Land of Milk and Honey.

THE 2001 WOODBOROUGH HILL CROP FORMATION

Part One of a report on an investigation and analysis, by *Andrew J. Buckley*.

Introduction

SOMETIME BETWEEN 8th. and 9th. August 2001 a beautiful crop formation appeared a few hundred metres south of Woodborough Hill in a field of wheat bordering the Kennet & Avon Canal. Together with two other witnesses, I have incontrovertible evidence that we were the first humans to enter and examine the above formation. Furthermore, I believe that we have compelling evidence to prove beyond reasonable doubt that this formation had not been produced by conventional 'hoaxing' methods.

Importantly, we were very keen to acquire detailed photographic and video evidence during our initial investigations, whilst the formation and its topographical surroundings were in a pristine state, to avoid contamination by other researchers which would inevitably ensue over the following days.

We feel it is vital that our report be distributed throughout the research community and wider public, since the evidence contained therein has serious implications for those who still maintain the crop circle phenomenon has a prosaic explanation.

In Section One I will provide a resumé of our discovery and will try to convey some of our feelings and the exhilaration we all experienced, together with a description of our initial investigations.

Section Two provides more in-depth analysis and a summary of our findings.

Section One: Discovery & Initial Investigations

The county of Wiltshire in south-west England has played host to an abundance of crop circle formations since the 1980s and possibly earlier. Many of these strange yet aesthetically beautiful markings have repeatedly occurred in the area known as the Vale of Pewsey, which is situated due east of the town of Devizes and a few miles to the south-west of Marlborough.

The Pewsey Vale or 'valley', as it is known to local residents, is essentially a rural agricultural area populated by small picturesque villages, including the twin hamlets of Alton Barnes and Alton Priors. The Alton Barnes estate, on whose land the Woodborough crop formation appeared, is farmed by Tim Carson at the Old Manor Farm in the village of Alton Barnes. In previous years some remarkable crop formations, including the famous 1990 'pictogram' and 1996 'Double Helix' have appeared on this farmland, particularly on the part of the estate known as the East Field. Woodborough Hill is a prominent landmark in the central valley area, situated immediately south of the East Field and just north of the Kennet & Avon Canal. A smaller prominence known as Picked Hill rises abruptly to the east of Woodborough Hill, near to the village of Wilcot (Fig. 2).

These two hills are popular meeting places for researchers, as they offer panoramic views across the Vale of Pewsey, from the range of hills to the north to the vast expanses of Salisbury Plain to the south. There have been many inexplicable sightings of unidentified aerial phenomena in the area, which many have suggested may be related to the appearance of crop formations. I have witnessed and videotaped a number of such sightings in the Pewsey Vale area since the early 1990s, having spent a

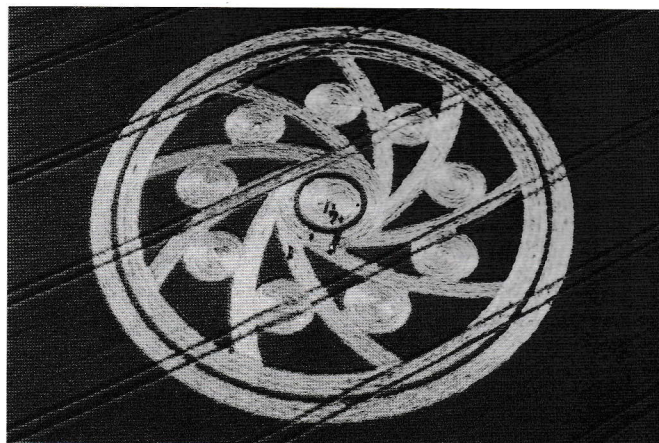


Fig. 1: the Woodborough Hill 2001 formation. Photo by Steve Alexander.

considerable amount of time and money researching these phenomena.

From the beginning of July 2001 I had been conducting on-site field investigations at various crop circle formations, including day and night sky watches, both independently and with other researchers. Already, many impressive crop formations had appeared in the UK and thankfully restrictions implemented by the government prohibiting access to public rights of way in Wiltshire due to the devastating foot and mouth disease outbreak affecting farm livestock had now been lifted.

On the evening of Thursday, 9th. August 2001 I had agreed to conduct a skywatch from the summit of Woodborough hill with two fellow researchers (names and addresses on file). We had arranged to meet in the car park of The Barge Inn at Honeystreet at 18.30 hrs. This public house and campsite is a well-known meeting place for crop circle and UFO researchers in the Vale of Pewsey. Our meeting and planned skywatch was in some doubt because the area had experienced torrential rainfall which began in the early hours of Thursday morning (9th. August) and had continued unabated throughout the day. Fortunately, from about 17.00 hrs. there was a dramatic change in the weather, eventually giving way to a warm, sunny



Fig. 2: Woodborough Hill and Picked Hill from the Kennet & Avon Canal, near Wilcot, Wilts.

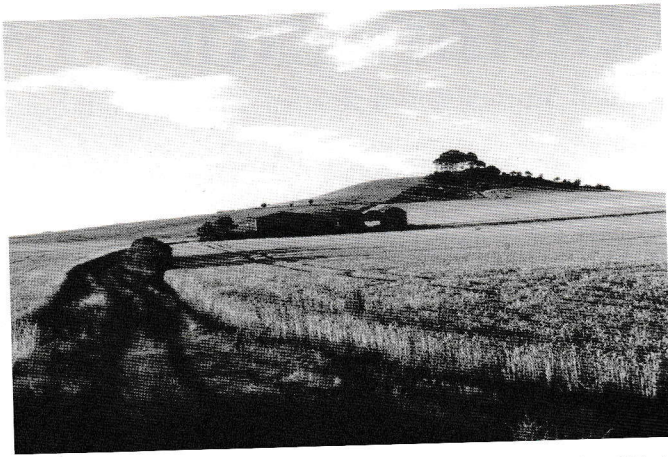


Fig. 3: Woodborough Hill and Barns from Woodborough Bridge, K & A Canal.

evening. The rainfall would prove to be an important factor during our subsequent investigation and analysis.

The meeting at The Barge Inn went ahead as planned and we agreed to continue with our evening skywatch. To gain access to Woodborough Hill, we decided to obtain permission from farmer David Carson, who kindly allowed us to drive through Old Manor Farm to the area known as the Woodborough barns, situated due south of the hill. Normally, we would have accessed the hill via the village of Woodborough and the Kennet & Avon Canal, necessitating a 30-minute walk, which can be very tiring when carrying heavy equipment (Fig. 3).

So on this occasion we were able to drive virtually to the foot of the hill and after unloading our equipment began the short walk to the summit. After climbing a wooden stile we paused for breath, deciding to take in the spectacular view to the south. Suddenly, one of my companions drew our attention to what appeared to be an unusual ground marking in a wheat field several hundred metres north of the Kennet & Avon Canal towpath. On reflection, it was rather fortuitous that we had decided to pause for a moment, as the ground marking would not have been clearly visible from the summit of Woodborough Hill. Of course, had we approached the area from the village, it would have been clearly visible to our right from the slightly elevated position of Woodborough canal bridge.

Through binoculars, we were quickly able to confirm that the ground marking was undoubtedly a crop formation and we hurriedly decided to walk back towards the canal and conduct a field investigation as soon as possible. We had already suggested that, due to the inclement weather, it was highly unlikely that anyone had been walking in the area that day and we were probably the first to discover the formation. The torrential rainfall would have prevented any farm work in the area, as confirmed by David Carson, who was certainly unaware of any new crop formations on his land when we called that evening at the farm. The Alton Barnes estate is regularly patrolled by farm workers and horse riders and any strange occurrence is immediately reported.

Because of these highly unusual and unprecedented circumstances, we resolved to approach the formation with great care and conduct a detailed investigation whilst systematically checking the surrounding terrain for signs of human entry. This procedure would be meticulously photographed and video-recorded to provide hard evidence of our investigation.

Standing on the canal bridge, we made an initial estimate that the formation was about 50 metres in diameter and pictogrammatic in form. It was situated approximately 100

metres north of the canal towpath, an estimated 500 metres from the northern slopes of Woodborough Hill and 500 metres from our vantage point (Fig. 4).

The wheat field containing the formation was crossed by the now familiar tractor 'tramlines': pairs of wheel tracks used for seed-planting and crop-spraying, which traversed the field from west to east. The formation was intersected by four tramlines and we decided to access the field along a tramline which ran in a northerly direction at the western edge of the field adjoining the path leading to the Woodborough Barns and Hill. This tramline was, of course, at right angles and connected to the other tracks which intersected the formation. Because this track was the only access point into the field from the public footpath, it was imperative to meticulously examine and film it, whilst checking for signs of human entry (Fig. 5).

We began our investigation at 19.55 hrs.

On first inspection we noticed that dozens of green kale plants were growing along the length of the tramline and were coated in large water droplets. After inspecting these plants and the soil beneath, it soon became apparent that there was absolutely no evidence of human entry. There were neither footprints nor disturbance of the soil/plants. Because of the heavy rainfall the soil was extremely damp and, after only a few footsteps, our boots were covered with mud. This is clearly evident on viewing the video footage. Obviously, had anyone walked along this track over the previous 24 - 48 hours, the numerous young and fleshy green stems of the kale plants would have been crushed and damaged, with marks on the underlying soil. We walked along this tramline, occasionally pausing to examine and film the undamaged plants, until we arrived at the four tramlines which continued at right angles across the field to intersect the crop formation. Apart from these tramlines, we also thought it important to inspect two additional tramlines which crossed the field immediately north (towards Woodborough Hill) and south (towards the Kennet & Avon Canal) of the formation and bordering it. We then walked several metres along each of these tramlines, where again there was an abundance of kale plants, standing grasses and crop stems. Neither the plants nor the underlying soil displayed evidence of human disturbance. We also noted that there were no entry or exit paths from the field boundaries to the formation caused by humans ignoring the tramlines and simply trampling through standing crop, as is clearly evident from the numerous aerial photographs taken the following morning.

We then selected a tramline which intersected the formation and, walking slowly, continued to examine the plants and soil. Having arrived at the periphery of the formation and, conscious of the fact that we had thus far not discovered any evidence of human entry, we were staggered to view a crop circle which appeared to be in pristine condition (Fig. 6).

I have been privileged to view other crop formations at very early stages following their discovery. Standing at the edge of the Woodborough Hill formation was no exception. There are clear characteristics present in what have been classified as formations where there was no evidence of human interference - these will be discussed in Section Two. Many of these features were immediately apparent when initially viewing the above formation. For example, the crop stems were not pressed flat to the ground but were angled between 15 and 30 degrees from the horizontal throughout the formation. Significantly, where the tramlines intersected the formation, none of the kale plants was flattened or damaged and they were still saturated with water droplets. Surprisingly, given that there had been over twelve hours of continuous and heavy rain, there was very little evidence of any natural down pressure due to weather damage on the wheat stems (Figs. 7 &

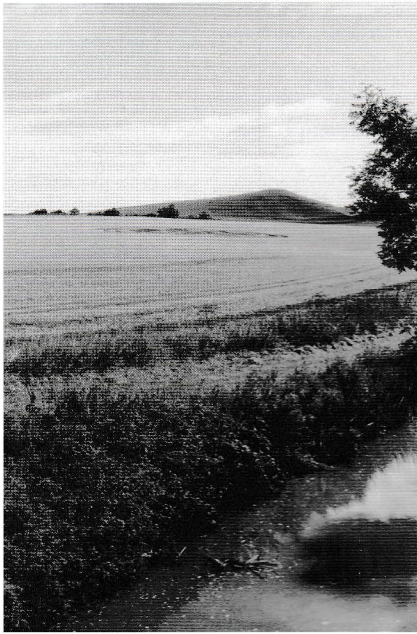


Fig. 4: the formation from the K & A Canal, with Picked Hill rising in the middle distance.



Fig. 5: green kale plants and very wet soil in the tractor tramline running north in the direction of Woodborough Hill.



Fig. 6: reaching the periphery of the formation, there is still no evidence of kale plant or soil damage in the tramlines.



Fig. 7: the north-western quadrant of the formation, clearly displaying the flowing stream effect of the wheat in a clockwise direction.



Fig. 8: the south-eastern quadrant, with Picked Hill in the background. Note how the crop stems are flowing in a clockwise direction and have not been flattened to the ground by any mechanical pressure.



Fig. 9: clumps of standing crop and other plants in the intersecting tramlines, unaffected by the clockwise flow of the crop.



Fig. 10: undamaged kale plants within the tractor tramlines, unaffected by the clockwise flow of the crop.



Fig. 11: the laid down clockwise flow of the crop interrupted by numerous clumps of standing wheat, a feature repeated throughout the formation.



Fig. 12: the central feature of the formation. Woodborough Hill is in the background.

8).

Before continuing our investigations, it was essential to check each of the entry and exit points where the tramlines intersected and crossed the formation for signs of crop/soil damage by humans as a result of walking and/or the using of mechanical implements. Within these intersecting tracks, there were again many clusters of kale plants, together with clumps of standing crop and other grasses. Without exception, there was absolutely no evidence of any damage to these plants or interference with the surface soil; no signs of footprints or other suspicious marks. This unequivocal lack of disturbance to the plants and soil ruled out any possibility of humans flattening the crop with stomping boards or garden rollers (Figs. 9 & 10).

Another important factor, connected with the earlier inclement weather conditions, was the lack of footprints and dirt/mud on the surface of the laid down crop. We found it impossible to avoid depositing huge lumps of mud from our boots after only a few minutes of walking on the soaked ground.

Along the edges and circumference of the formation we noticed that whatever agency was responsible for laying down the crop was largely centrifugal in action. Where the wall of standing crop (beyond the outside edge of the formation) met the inner laid down areas, the upstanding stems were angled at approximately 5 degrees from the vertical. Another distinctive feature was the many clumps of standing crop throughout the formation, which may not have been laid down due to the natural dips and hollows in the ground (Fig. 11).

An outstanding central feature of the formation was a circular ring of upstanding crop with an overall diameter of



Fig. 13: the central feature, beautifully and intricately formed with no sign of damage despite previous heavy rainfall.

approximately 10 metres (Fig. 12).

The width of this upstanding ring of crop was about 1 metre and it was perfectly formed with no obvious entry and exit points. Situated at the exact centre of this ring was an intricately formed standing feature of crop, which merited closer scrutiny (Fig. 13).

This feature comprised several single standing stems which were remarkably undamaged, given the previous torrential rainfall. The entire feature was swirled in a clockwise direction with many single stems woven tightly together at the base (Fig. 14). Whatever agency was responsible for creating this feature operated with a very precise and gentle motion and some of the woven stems exhibited the now-familiar 'magical bends', where the stems are curved at the base without any evidence of breakage, creasing or crimping.

Rotating arms of woven and laid down crop spiralled outward from this central feature in an expanding pattern to the edges of the circular ring.

We then decided to determine the overall geometrical shape of the formation, which was difficult from a ground perspective. Nine spiral arms of laid down crop emanated from the central ring feature and were connected to two circumjacent circles which were divided by approximately 1 metre of standing crop. Nine large circles, each approximately eight metres in diameter, were accurately positioned between each of the spiral arms (Fig. 1: aerial photograph). It is hoped to obtain detailed site diagrams, precise measurements of the formation and possibly results of soil and crop analyses to include in an updated report.

Following a brief pause to review the symmetrical elegance

of the formation, we continued our detailed examination. Although the laid down crop was flowing in a clockwise direction, there were many complex subtleties within the formation, particularly at 'junction points', e.g. at the ends of the spiral arms (Figs. 15 & 16). Here, there was evidence of the multi-layering of three or more layers of crop overlapping in the familiar stream-flowing motion, displaying great delicacy and spontaneity.

Occasionally, whatever agency was responsible had created highly distinctive 'opposite flow' characteristics, where two opposing flow directions resulted in extremely delicate intermeshing of the seed heads in a 'pyramid' effect, some 30 centimetres off the ground (Fig.17). Regrettably, neither photographic nor video image could successfully capture the three-dimensional subtlety and sophistication of this feature. It was difficult to comprehend how such an agency could have meshed the seed heads together with so little apparent damage to the crop. Clearly, such an effect could not be created by a 'hoaxer' with a stomping board!

Congruent with the overall clockwise flow within the formation, each of the nine equally sized satellite circles displayed an identical swirl pattern radiating from a central point. Again, there was no evidence of any forced mechanical pressure, with much of the laid down crop angled well above the surface of the ground, together with many clumps of standing stalks (Fig. 18).

Whereas in some crop formations the crop stems and seed heads have been literally flattened to the ground, arguably attributable to the actions of a stomper board, on this occasion it was noted that, without exception, the seed heads in the laid down sections of the formation pointed in the direction of the

clockwise flow in a neat and orderly fashion, despite the previous fifteen hours of disruptive rain and wind (Fig. 19).

We had ample time to examine the crop stems and seed heads for further signs of damage, whether caused by artificial mechanical pressure (stomping, rolling or treading down) or alternatively wind and rain damage. Remarkably, apart from a few individual stalks here and there, very little damage was evident, despite the inclement weather conditions. The majority of the crop stems were undamaged and unbroken, without any signs of creasing or crimping. As mentioned earlier, there were many examples of the so-called 'magical bends', particularly at the places where the laid down sections within the formation were crossed by tractor tramlines (Fig. 20). Here, there were rows of completely undamaged green kale and other plants, untouched by whatever agency had passed through. Where these tramlines crossed features such as the spiral arms or the outer circles, there was a distinctive straight edge of 'magically bent' stalks, again showing no signs of damage (Fig. 21).

Admittedly, there were a few sporadic broken crop stems dotted throughout the formation but these formed only a very tiny percentage and were undoubtedly the result of wind and rain damage. Others were the result of walking extensively around the formation during our investigation, even though we were extremely careful.

Satisfied at having successfully examined the formation in sufficient detail, we concluded our investigations at approximately 21.00 hrs due to insufficient light and visibility. I was able to obtain 45 minutes of video footage and over 50 still colour photographs, a selection of which has been included in this report.



Fig. 14: the stems at the base of the central feature exhibited 'magical bends' and were tightly packed and swirled in a clockwise direction.



Fig. 16: intricate weaving of several layers of crop repeat where the edges of the satellite circles touch the spiral arms.



Fig. 15: multiple flows of laid down crop meet at the junctions of the spiral arms.



Fig. 17: two opposing flow directions result in delicate intermeshing of the seed heads, creating a 'pyramid' effect 30cm off the ground.



Fig. 18: facing north, with Woodborough Hill in the background, one of the nine satellite circles displaying a clockwise swirl pattern.



Fig. 19: throughout the laid down sections, the seed heads point in the direction of the clockwise flow.



Fig. 20: many examples of so-called 'magical bends', where stems are not broken, crimped or creased.



Fig. 21: a straight row of 'magically bent' stalks at the intersection of the tramlines. Note the undamaged kale plants within the wheel tracks.

Whilst examining the formation we were joined by a field investigator from a local research group (name and address on file) who had been staying in the area. After briefly inspecting the formation he concurred with us regarding many of our findings. We speculated that the formation may have inexplicably appeared during the day, as our friend had been out walking near Woodborough Hill early on in the morning of 9th. August and couldn't recall seeing any unusual ground markings in the area at that time.

I decided to revisit the formation early the following morning (Friday, 10th. August) to obtain additional photographs. It was obvious that very few, if any, researchers or tourists had visited the formation since the previous day, due to the lack of any further disturbance on the ground. I remained there till about 10.30 hrs, when several helicopters suddenly appeared, circling overhead, their crews filming the formation. Soon afterwards, several well-known crop circle researchers arrived on foot, all of whom were very experienced in detecting newly-formed formations. They confirmed that they had not been previously aware of any unusual ground markings in the Woodborough area, despite having monitored the locality over the preceding 24 - 48 hours.

(Section Two: Analysis & Conclusions will be published in issue #35: Autumn 2002)

Andrew J. Buckley was born in 1954 and educated at the Manchester Metropolitan University and University of London

UK, graduating with a degree and Masters Degree in Fine Art (179/81). During this time he developed an interest in prehistory, earth mysteries, archaeology, astronomy and the paranormal.

As a former member of BUFORA (British UFO Research Association) and the CCCS (Centre for Crop Circle Studies), he has been actively involved in researching and investigating the UFO and crop circle subject since 1972. he has occasionally given lectures, contributed articles to various publications on these subjects and participated in television and video productions, including the American *Sightings* TV series.

Andrew is a full time artist, graphic designer and lecturer in further education. He is currently living and working in the county of Cheshire, UK.

Copies of this report (B&W: £5.00 and Colour: £10.00) are available from:

A. J. Buckley
40 Derwent Drive
Winsford
Cheshire CW7 3LB
United Kingdom

Tel: 01606 - 594210

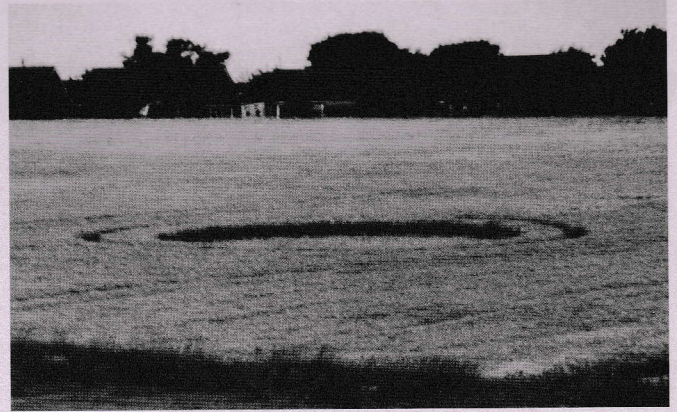
E-mail: andrewjb68@hotmail.com

The first thing that took my attention on approaching the formation was that it did, in fact, as appeared from the road, lie isolated between two tramlines. Because those tramlines emerged into the set-aside (thus obviating the need for the tractor to turn around in the barley), I could access the field from where I stood without disturbing any standing crop.

I was genuinely surprised (and a little excited) to realise, on walking up the tramline and for some distance past the ringed circle, that there were no entry marks to the formation on that side. I retraced my steps and headed up the tramline on the far side, again walking for some fifty yards beyond it. No entry marks from this side either. I spent the next fifteen minutes or so checking and rechecking. There were definitely no entry marks into the formation. As evidence, I videoed the area around the whole formation, narrating an ad-lib soundtrack as I went along, for NUFOS and posterity. When I finally went into the formation, I did it by parting the standing crop before me with two garden canes, stepping into the gaps between bunches of stalks. I did this painfully carefully, in order to disturb the appearance of the formation as little as possible but even this delicate and slow entry left its mark (as shown on the video recording).

Once into the ring I walked around slowly, gradually filming the whole formation, again providing a live commentary. Being almost a week old, the still partly-green barley had already haphazardly risen a couple of inches, but the floor pattern was still clearly apparent. The ring itself looked like a frozen swirling stream, with the crop laid in a crisscross fashion, in places lying transversely almost at right angles to the ring. In the circle itself, the lay was the same, but with larger "waves". Both ring and circle were swirled anticlockwise.

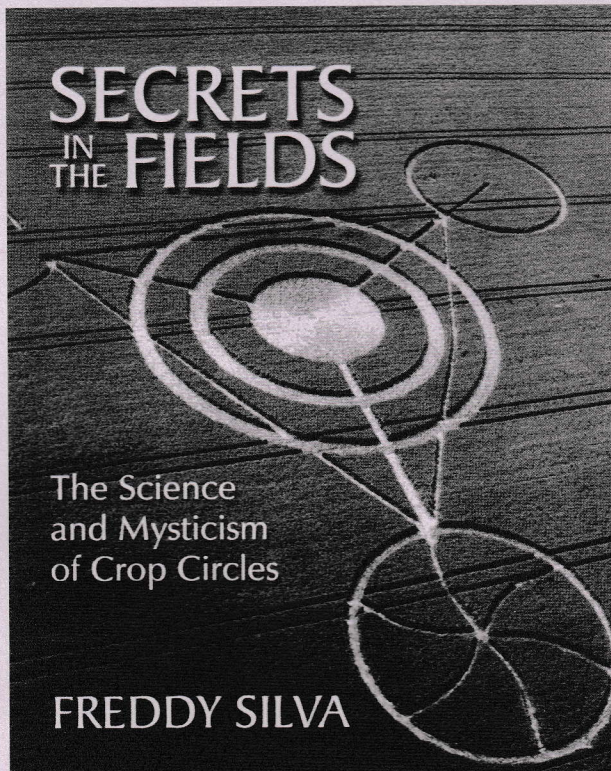
When Mick Hardy arrived on his bike, we reexamined the area for signs of entry and were both satisfied that, apart from my own mark, there was no evidence of entry on foot into that formation anywhere around it. Mick was as intrigued as me



by the "flow" of the laid crop. Written or spoken references to this "liquid" effect are one thing, but to actually see it does make one wonder! We also took note of the fact that although the stalks were bending at the nodes (plants do this when knocked over by whatever means, in order to strain towards the light again - and barley begins to recover almost immediately), the vast majority were doing so sideways, which had us puzzled.

The farmer having given us permission to do so, a contingent from NUFOS descended on the formation a couple of days later to conduct a group survey and carry out some exploratory dowsing. Responses and opinions were mixed, though most agreed that the formation scored very highly on the "authenticity scale". We videotaped our activities, with one of the more exciting aspects being the discovery by Carole Jolly of a star/pentagram dowsable pattern, which Mick Hardy has written about for the full report on this formation to be published in the next issue.

(Footnote: an apology to Paul Anderson of CCCRN, who should have been credited with the shadow diagrams in Neil Olsen's article "Spiritual Warfare Intensifies" in issue #33.)



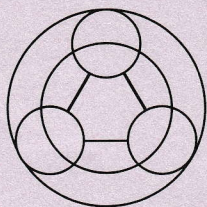
Secrets In The Fields - by Freddy Silva

(Hampton Roads Publishing, 336 pp, 7x9 in. (18 x23 cm), approx. 400 photos, diagrams and pictograms, in colour and b&w.)

Suppose you were given a set of keys...

Keys that awaken a giant sleeping network of energy.
 Keys that open a library of ancient information - knowledge that science is only now rediscovering.
 Keys encoding new systems of technology.
 Keys with powers to heal, to alter consciousness and affect social change.
 Keys that provide a bridge between physical and non-physical realms.
 Keys that ultimately unlock the Universal potential within you.
 And suppose great efforts have been employed to suppress the origins of these keys?

With a solid foundation and a framework that intertwines science and metaphysics, this unique book by Freddy Silva is a journey into uncharted territory, in which crop circles are revealed to be part of a reality that is at the leading edge of this new millennium, and only just coming to the attention of the everyday world.



Interested in Crop Circles?

Want to know more about this intriguing phenomenon?

Contact us at:

Centre for Crop Circle Studies
P.O. Box 32034
London
NW1 1ZW

Membership; research; contacts; events etc.
Get informed - join the investigation.
Find out what is really going on in fields
around the world.



For details of membership of the
Norfolk UFO Society (NUFOS)
please contact:

John Sayer
17 Spindle Road
Norwich
Norfolk NR6 6JR

(01603 - 486722)

==== **NUFOS** =====



THE BARGE INN

- Mixing in the right circles -

We offer home cooked food 7 days a week.
Lunch 12 - 2pm. Evening meal 7 - 9.30pm.

- Ushers Ales • Family Room • Garden •
- Camping & Caravan Field •
- **Crop Circle Information Centre** •

*Situated off Alton Barnes to Woodborough road.
Turn into lane adjacent to wood yard,
south of canal bridge.*

The Barge Inn
Honeystreet, Pewsey, Wilts. SN9 5PS
(Tel. 01672 - 851705)

CROP CIRCLE PHOTOGRAPHS

and other colour image formats

For details, send SAE to:

Lucy Pringle
5, Town Lane
Sheet
Petersfield
Hants. GU32 2AF
(01730-263454)

Steve Alexander
27, St. Francis Road
Gosport
Hants. PO12 2UG
(023-9235-2867)